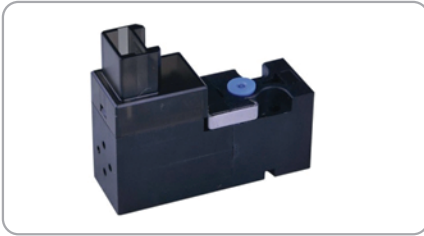


## WXY 10A SERIES

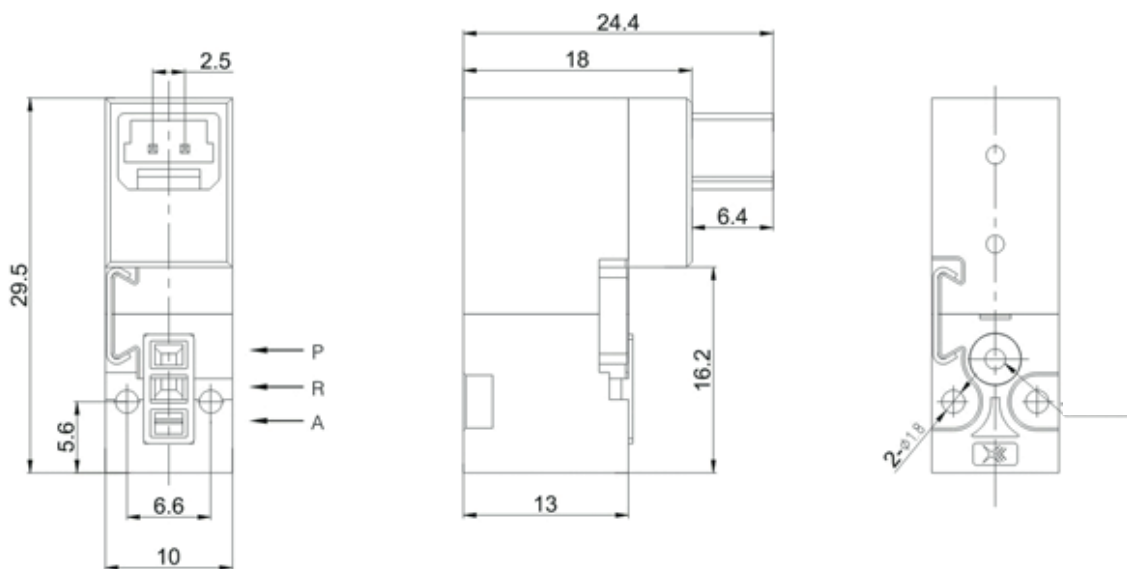
### Product Type



#### Speciality

Use as single valve or valve group.  
 Often use as pilot valve for large orifice air valve or control of min single acting cylinder.  
 Lower power consumption, direct controlled by PC.  
 Small size and light weight, easy installation, small occupied space.  
 No need of lubrication, durable.  
 Coil with LED & over - voltage protection device .

#### Dimensions



#### Technical Characteristics

Model	WXY10A
Medium	Direct Drive Type
Motion Pattern	2/3 NC
Type	0.7 mm
Orifice (mm)	M3-M5 (to manifold)
Connection Port	0~0.7 MPa
Working Pressure	-10 ~ +80 C
Ambient Temperature	DC12V,DC24V±10%
Voltage	F.H
Power Consumption	1W
Material of Body	POM, PPS
Seal	NBR