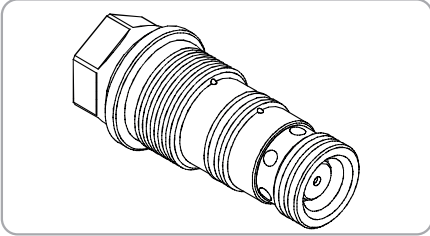
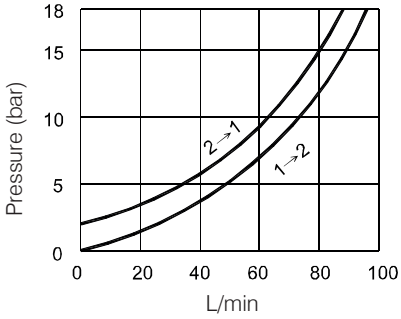


**WPK SERIES CARTRIDGE PILOT OPERATED CHECK VALVES**

**WPK -12 Series**



**Performance**



**Specifications**

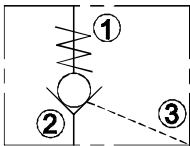
Model Number	Max. Pressure (bar)	Cracking Pressure(bar)	Pilot Ratio	Max. Flow (lpm)	Weight (Kg)
WPK-12	350 (5076psi)	2(29 psi)	3.2:1	120(31.70 gpm)	0.26(0.57 lbs)
Fluid Type				ISO VG 32, 46, 68	
Viscosity				10~400 (59~1854 SSU)	
Operating Temperature				-15~70 (-5~158°F)	
Contamination Level				ISO4406.21/19/16 NAS1638,10	

**How To Order**

<b>1</b>	<b>2</b>	<b>3</b>
<b>WPK</b>	<b>12</b>	<b>- *</b>

- 1 Valve Series**  
WPK= Cartridge Pilot Operated Check Valves
- 2 Subplate Mounting Size**  
Size:12  
Cavity :CS12-3S
- 3 Design No**

**Control Port (S)**



**Dimensions**

