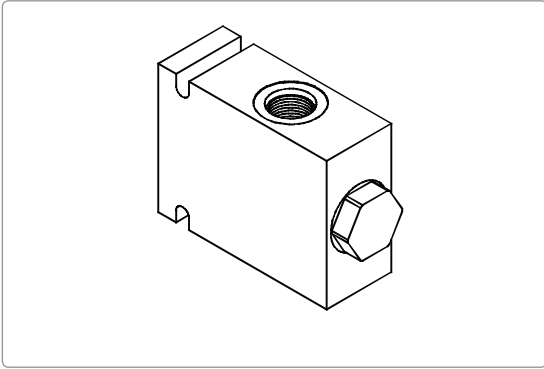


## WFD-06/08 SERIES FLOW DIVIDER



### Özellikler / Specification

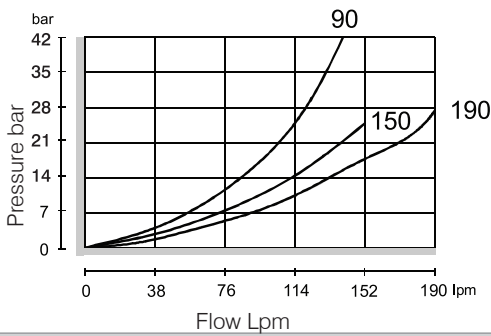
| Model Number             | Operating Pressure (bar) | Flow (lpm)                  | Weight (kg)  |
|--------------------------|--------------------------|-----------------------------|--------------|
| WFD-06                   | 250 (3626 psi)           | 194(51.25 gpm)              | 2.(4.40 lbs) |
| WFD-08                   |                          |                             | 2.(4.40 lbs) |
| Fluid Type               |                          | ISO VG 32, 46, 68           |              |
| Viscosity cSt            |                          | 10~ 400 (59~ 1854 SSU)      |              |
| Operating Temperature °C |                          | -15 ~ 70 (-5~ 158 °F)       |              |
| Contamination Level      |                          | ISO4406.21/19/16 NAS1638,10 |              |

### Performance

Test Conditions

Oil Temperature 50°C(122°F)

Viscosity :35 cSt (163 SSU)



### Description

Screw-in, cartridge-style, spool-type flow divider/combiner. In the dividing mode, the item will divert input flow from V to C2 and C1, based on the ratio specified, regardless of operating pressure. When the flows from C2 and C1 to port V. Synchronizing flow is provided in both the dividing and combining modes at "bottomed" conditions in cylinder applications and at stalled conditions in motor applications.

### How To Order

| 1   | 2  | 3  | 4 |
|-----|----|----|---|
| WFD | 06 | 90 | * |

#### 1 Valve Series

WFD=Flow Divide Valves

#### 4 Threaded Type

1P :PT                    2N: NPT  
3G: PF (G)            4A:SAE  
5B: BSP

#### 2 Subplate Mounting Size

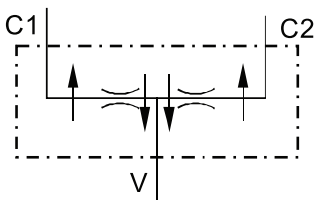
06=3/4"  
08=1"

#### 3 Flow Specifications

90: 90 l/min                    110: 110 l/min  
150: 150 l/min                190: 194 l/min  
220: 220 l/min

Division or combination ratio :50 % : 50%  
Flow Accuracy: 3% ~ 10%

### Control Ports



### Dimensions

