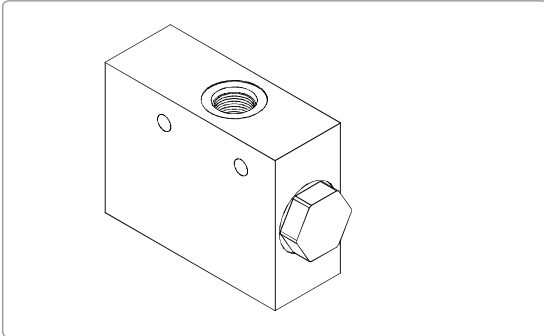


## WFD-05 SERIES FLOW DIVIDER

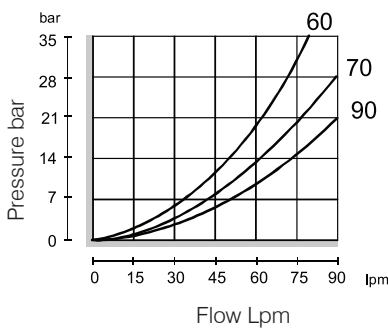


### Özellikler / Specification

Model Number	Operating Pressure (bar)	Flow (lpm)	Weight (kg)
WFD-05	250 (3626 psi)	90 (23.78 gpm)	2.05 (4.52 lbs)
Fluid Type		ISO VG 32, 46, 68	
Viscosity		cSt	
Operating Temperature		°C	
Contamination Level		ISO4406.21/19/16 NAS1638,10	

### Performance

Test Conditions  
 Oil Temperature 50°C(122°F)  
 Viscosity :35 cSt (163 SSU)



### Description

Shuttle Valves, cartridge-style hydraulic check valve, for use in blocking circuits where a priority of flow / direction is given to a higher pressure circuit over a lower one. A load - shutting.

### How To Order

1	2	3	4
WFD	05	— 90	— *

#### 1 Valve Series

WFD=Flow Divide Valves

#### 4 Threaded Type

1P :PT                      2N: NPT  
 3G: PF (G)                4A:SAE  
 5B: BSP

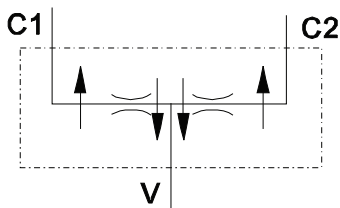
#### 2 Subplate Mounting Size

05 : G 3/4

#### 3 Flow Specifications

60:30~60 l/min    Division or combination ratio :50 %  
 70:43~74 l/min  
 90:53~90 l/min    Flow Accuracy: 3% ~ 10%

### Control Ports



### Dimensions

