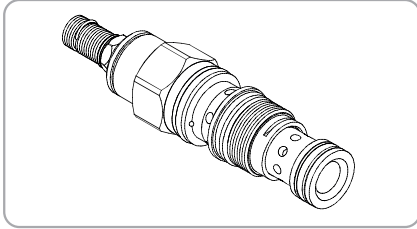
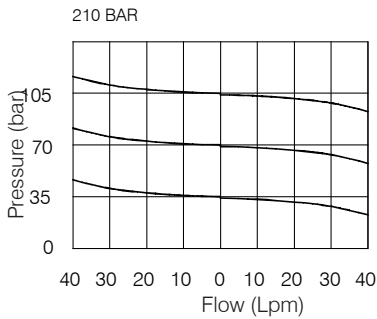


WRB SERIES PRESSURE CONTROL VALVES

WRB- 02 Series



Performance



Specifications

Model Number	Max. Pressure (bar)	Flow (lpm)	Weight (Kg)
WRB-02	350 (5076 psi)	40(10.57 gpm)	0.18 (0.4 lbs)
Fluid Type		ISO VG 32, 46, 68	
Viscosity cSt		10~400 (59~1854 SSU)	
Operating Temperature		-15~70 (-5~158°F)	
Contamination Level		ISO4406.21/19/16 NAS1638,10	

How To Order

1	2	3	4	5
WRB	02	— *	— *	— *

1 Valve Series
WRB=Cartridge Balance Valves

2 Subplate Mounting Size
02 :T-11A Cavity :CST-11A

3 Adjustment Pressure

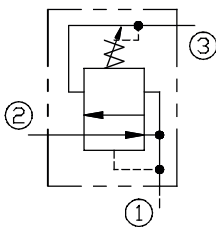
Order	Adjustment pressure
06	4 ~ 60 (bar)
10	4 ~ 105 (bar)
20	7 ~ 210 (bar)

4 Adjustment Option

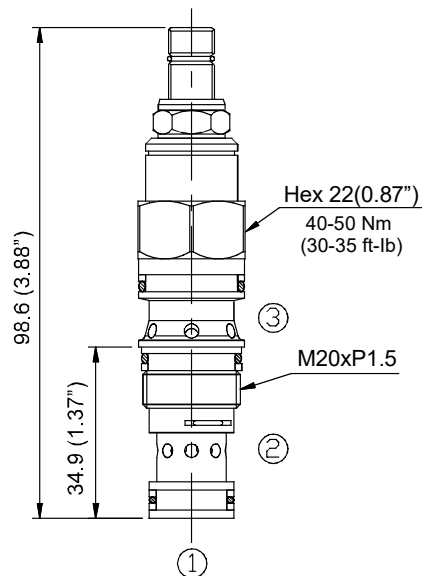
NONE	NONE:TOOL ADJUST	
K	K:HAND-BAR ADJUST	

4 Design No

Control Port (S)

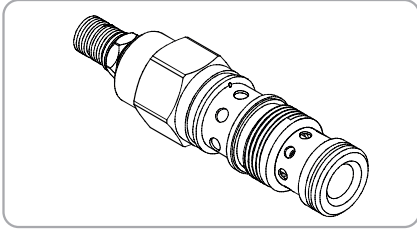


Dimensions

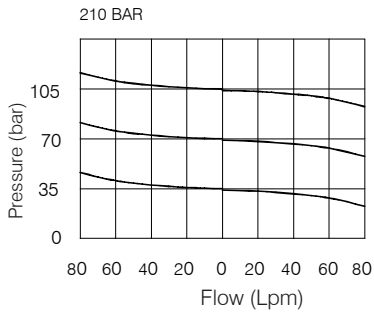


WRB SERIES PRESSURE CONTROL VALVES

WRB- 03 Series



Performance



Specifications

Model Number	Max. Pressure (bar)	Flow (lpm)	Weight (Kg)
WRB-03	350 (5076 psi)	80(21.13 gpm)	0.3(0.66 lbs)
Fluid Type		ISO VG 32, 46, 68	
Viscosity cSt		10~400 (59~1854 SSU)	
Operating Temperature		-15~70 (-5~158°F)	
Contamination Level		ISO4406.21/19/16 NAS1638,10	

How To Order

1	2	3	4	4
WRB	03	- *	- *	- *

1 Valve Series
WRB=Cartridge Balance Valves

2 Subplate Mounting Size
Size : 03T-2A Cavity CST 2A

3 Adjustment Pressure

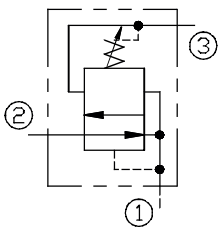
Order	Adjustment pressure
06	4 ~ 60 (bar)
10	4 ~ 105 (bar)
20	7 ~ 210 (bar)
30	10 ~ 315 (bar)

4 Adjustment Option

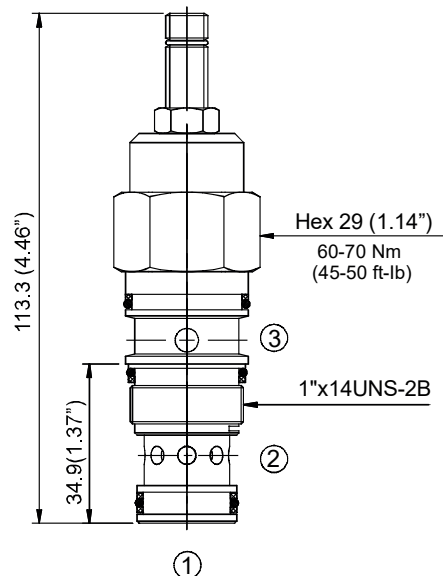
NONE	NONE:TOOL ADJUST	
K	K:HAND-BAR ADJUST	

5 Design No

Control Port (S)

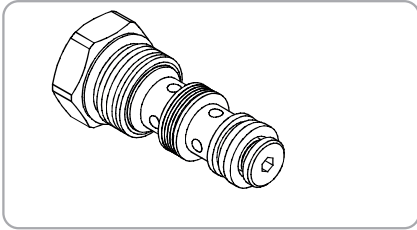


Dimensions

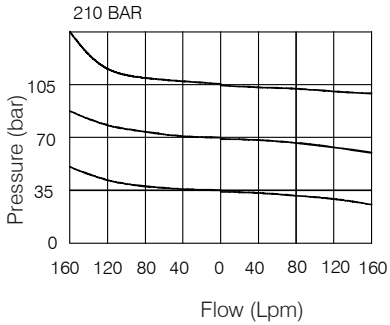


WRB SERIES PRESSURE CONTROL VALVES

WRB- 06 Series



Performance



Specifications

Model Number	Max. Pressure (bar)	Flow (lpm)	Weight (Kg)
WRB-06	350 (5076 psi)	160(42.27 gpm)	0.61 (1.35 lbs)
Fluid Type		ISO VG 32, 46, 68	
Viscosity cSt		10~400 (59~1854 SSU)	
Operating Temperature		-15~70 (-5~158°F)	
Contamination Level		ISO4406.21/19/16 NAS1638,10	

How To Order

1	2	3	4	5
WRB	06	— *	— *	— *

1 Valve Series

WRB=Cartridge Shuttle Valves

2 Subplate Mounting Size

06 :T -17 A Cavity CST-17A

3 Adjustment Mounting Size

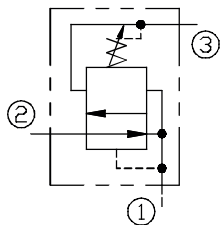
Order	Adjustment pressure
06	4 ~ 60 (bar)
10	4 ~ 105 (bar)
20	7 ~ 210 (bar)
30	10 ~ 315 (bar)

4 Adjustment Option

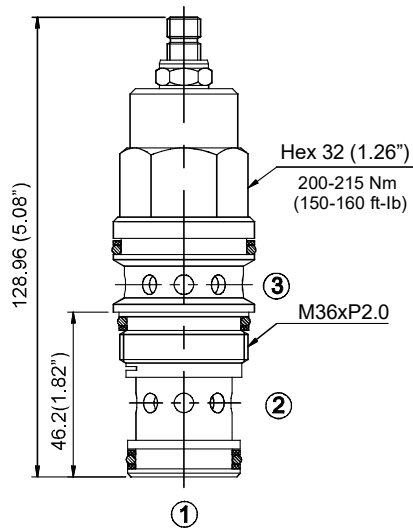
NONE	NONE:TOOL ADJUST	
K	K:HAND-BAR ADJUST	

5 Design No

Control Port (S)

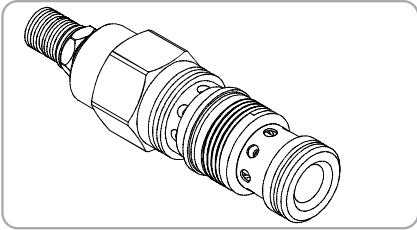


Dimensions

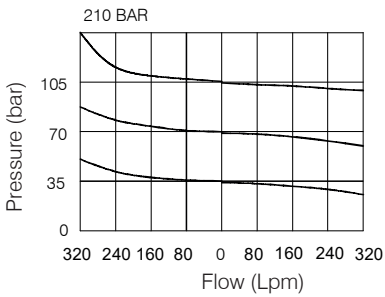


WRB SERIES PRESSURE CONTROL VALVES

WRB- 10 Series



Performance



Specifications

Model Number	Max. Pressure (bar)	Flow (lpm)	Weight (Kg)
WRB-10	350 (5076 psi)	320 (84.53 gpm)	1.3 (2.87 lbs)
Fluid Type	ISO VG 32, 46, 68		
Viscosity cSt	10~400 (59~1854 SSU)		
Operating Temperature	-15~70 (-5~158°F)		
Contamination Level	ISO4406.21/19/16 NAS1638,10		

How To Order

1	2	3	4	5
WRB	10	— *	— *	— *

- Valve Series**
WRB=Cartridge Shuttle Valves
(Pilot Operated Reducing/Relieving Valves)
- Subplate Mounting Size**
10 :T -19 A Cavity CST-19A
- Adjustment Mounting Size**

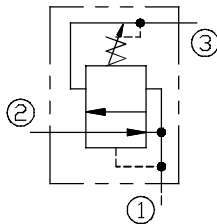
Order	Adjustment pressure
06	4 ~ 60 (bar)
10	4 ~ 105 (bar)
20	7 ~ 210 (bar)
30	10 ~ 315 (bar)

4 Adjustment Option

NONE	NONE:TOOL ADJUST	
K	K:HAND-BAR ADJUST	

5 Design No

Control Port (S)



Dimensions

