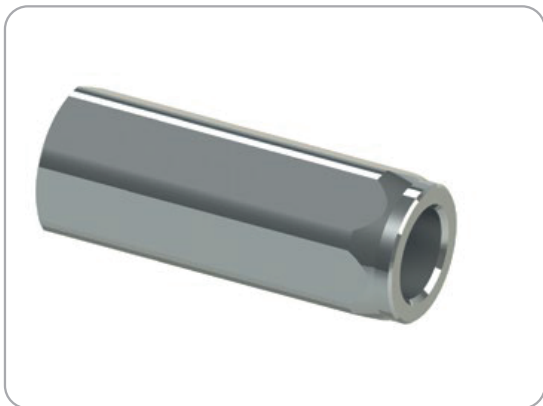
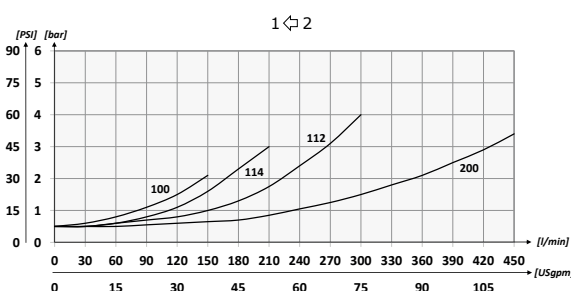
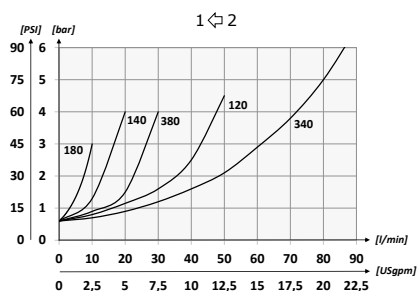


VUR BSPP Series



01		(F/F check housing valves)	VUR
02	(Size)	BSPP 1/8	180
		BSPP 1/4	140
		BSPP 3/8	380
		BSPP 1/2	120
		BSPP 3/4	340
		BSPP 1	100
		BSPP 1-1/4	114
		BSPP 1-1/2	112
03	(Sealing)	(Ball sealing only for VUR180/140/380/120)	SF
		(Poppet sealing)	SP
04	(Spring)	1 bar (Standard 14.5 PSI)	1
		3 bar (43.5 PSI)	3
		4,5 bar (65.25 PSI)	4,5
		6 bar (87 PSI)	6

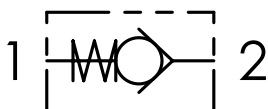
Performance



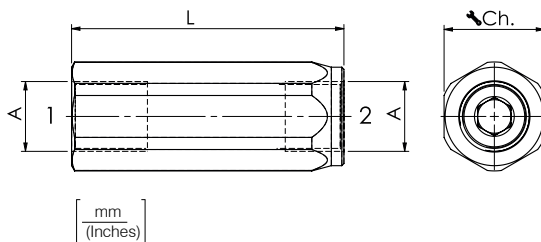
Technical data

Mineral oil	ISO 6743/4 (DIN 51524)
Oil viscosity	15-250 mm ² /s (15 to 250 cSt)
	ISO 4406:1999 Classe 19/17/14
Max contamination index with filter	
Oil temperature	-20°C +80°C -4°F + 176°F
Ambient temperature	-20°C +50°C -4°F + 122°F
It is necessary a filter use to protect the valve (advised filtration 15 μm)	
	0,25 cm ³ /min - 5 min
	0,015 in ³ /min - 5 min

Control Port (S)



Dimensions



Technical characteristics

Type	A	Max flow (USgpm)	Max Pressure (PSI)	L	Ch.	Approx weight (lb)
VUR180	BSPP 1/8	5 (1.3)	400 (5800)	47(1.85)	14	0,05 (0.11)
VUR140	BSPP 1/4	15 (4.0)		55(2.17)	19	0,10 (0.22)
VUR380	BSPP 3/8	30(7.9)		65(2.56)	24	0,18 (0.40)
VUR120	BSPP 1/2	50(13.2)		75(2.95)	27	0,23 (0.50)
VUR340	BSPP 3/4	90(23.8)		86,5 (3.41)	35	0,45 (1)
VUR100	BSPP 1	150(39.6)	350 (5075)	110 (4.33)	41	0,73(1.6)
VUR114	BSPP 1-1/4	200(52.8)		123 (4.84)	55	1,5(3.3)
VUR112	BSPP 1-1/2	300(79.2)		138 (5.43)	60	1,85(4.07)
VUR200	BSPP 2	430(113.5)		250 (3625)	145 (5.71)	70