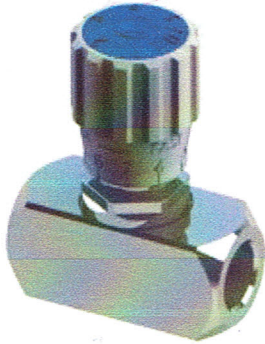


STB-BSP

Bidirectional flow control valves

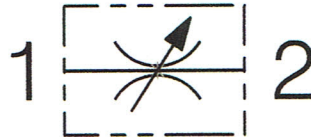


Ball sealing only for STU180/140/380/120

Ordering Code

		01	02
		STB	
01	Bidirectional flow control valves		STB
		BSPP1/8	180
		BSPP1/4	140
		BSPP3/8	380
		BSPP1/2	120
02	Dimensione Size	BSPP3/4	340
		BSPP1	100
		BSPP1-1/4	114
		BSPP1-1/2	112

Hydraulic circuit

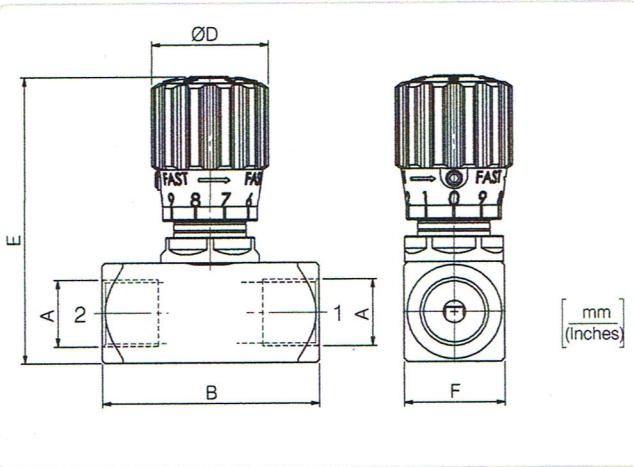
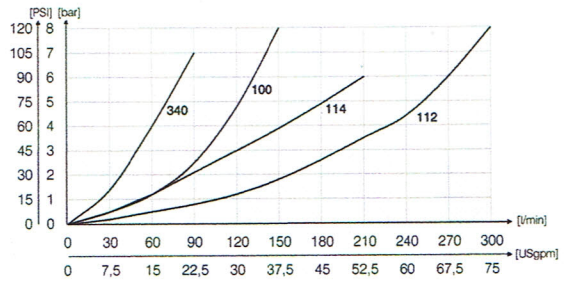
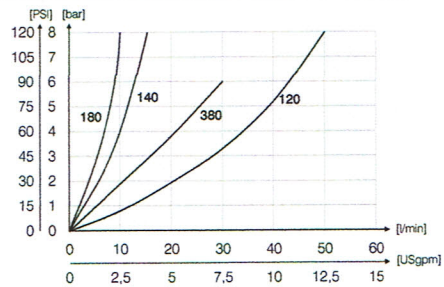


Technical data

Mineral oil	ISO 6743/4 (DIN 51524)
Oil viscosity	15-250 mm ² /s (15 to 250 cSt)
Max contamination index with filter	ISO 4406:1999 Classe 19/17/14
Oil temperature	-20°C +80°C -4°F + 176°F
Ambient temperature	-20°C +50°C -4°F + 122°F

It is necessary a filter use to protect the valve (advised filtration 15 μm)

Performances



Technical characteristics

Code	A	Portata max (l/min) Max flow (USgpm)	Pressione max (bar) Max pressure (PSI)	B	D	E	F	Approx weight (lb)
STB180	BSPP1/8	10(2.6)	400 (5800)	44 (1.73)	20(0.79)	53(2.09)	20(0.79)	0,15 (0.33)
STB140	BSPP1/4	15(4)		54 (2.13)	30 (1.18)	71,5 (2.81)	25 (0.98)	0,29 (0.70)
STB380	BSPP3/8	30(7.9)		64 (2.52)	33 (1.30)	72 (2.83)	30 (1.18)	0,26 (0.57)
STB120	BSPP1/2	50(13.2)		81 (3.19)	42 (1.65)	94 (3.70)	40 (1.57)	1,02 (2,25)
STB340	BSPP3/4	80(21.1)	350 (5075)	102(4.01)	53 (2.09)	99 (3.90)	45 (1.77)	1,38 (3.04)
STB100	BSPP1	150(39.6)				121,5 (4.78)	55 (2.17)	2,2 (4.8)
STB114	BSPP1-1/4	200(52.8)				131,5 (5.18)	65 (2.56)	3 (6.6)
STB112	BSPP1-1/2	300(79.2)						