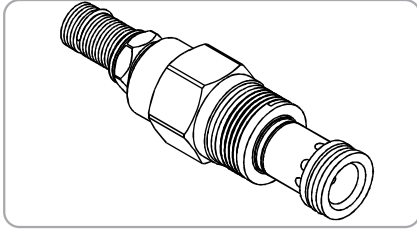
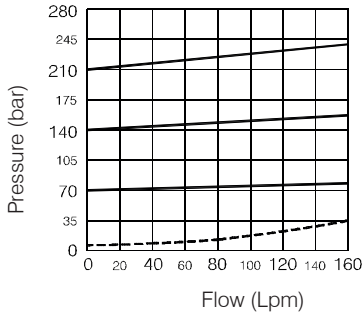


# WWRC SERIES CARTRIDGE TYPE RELIEF VALVES

## WWRC- 02 Series



### Performance



### Specifications

Model Number	Max. Pressure (bar)	Max. Flow (lpm)	Weight (Kg)
WWRC-02	420(6092 psi)	100(26.42 gpm)	0.15 (0.33 lbs)
Fluid Type		ISO VG 32, 46, 68	
Viscosity cSt		10~400 (59~1854 SSU)	
Operating Temperature		-15~70 (-5~158°F)	
Contamination Level		ISO4406.21/19/16 NAS1638,10	

### How To Order

1	2	3	4
WWRC	02	— *	— *

**1 Valve Series**  
WWRC=Cartridge Type Relief Valves

**4 Adjustment Option**

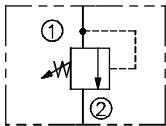
NONE	NONE:TOOL ADJUST	
K	K:HAND-BAR ADJUST	

**2 Subplate Mounting Size**  
02 :T-10A Cavity :CST-10A

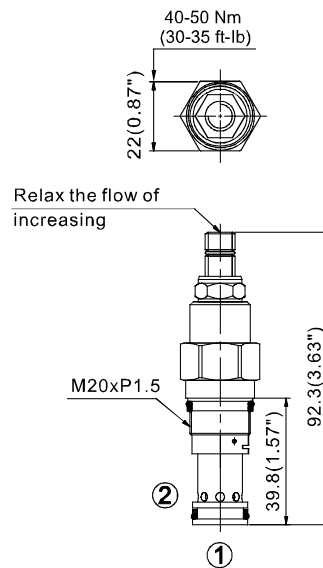
**3 Adjustment Pressure**

Order	Adjustment pressure
06	※ ~ 60 (bar)
10	※ ~ 100 (bar)
20	8 ~ 210 (bar)
40	12 ~ 420 (bar)

### Control Port (S)

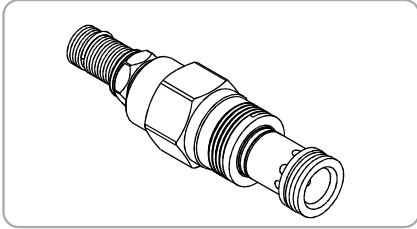


### Dimensions

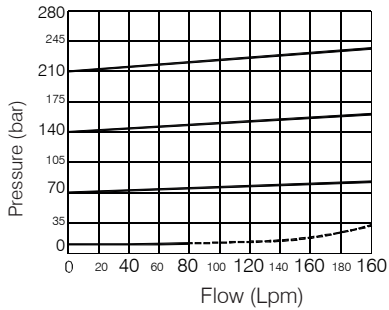


# WWRC SERIES CARTRIDGE TYPE RELIEF VALVES

## WWRC- 03 Series



### Performance



### Specifications

Model Number	Max. Pressure (bar)	Max. Flow (lpm)	Weight (Kg)
WWRC-02	420(6092 psi)	200(52.83 gpm)	0.27 80.59 lbs)
Fluid Type		ISO VG 32, 46, 68	
Viscosity cSt		10~400 (59~1854 SSU)	
Operating Temperature		-15~70 (-5~158°F)	
Contamination Level		ISO4406.21/19/16 NAS1638,10	

### How To Order

**1** **2** **3** **4**  
**WWRC 03** — \* — \*

**1 Valve Series**  
 WWRC=Cartridge Type Relief Valves

**4 Adjustment Option**

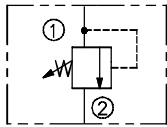
NONE	NONE:TOOL ADJUST	
K	K:HAND-BAR ADJUST	

**2 Subplate Mounting Size**  
 03 :T-3A Cavity :CST-3A

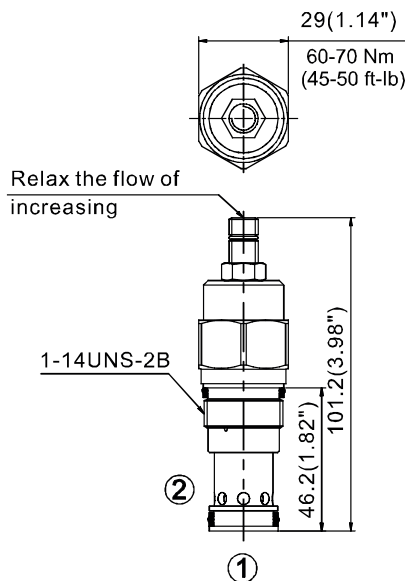
**3 Adjustment Pressure**

Order	Adjustment pressure
06	※ ~ 60 (bar)
10	※ ~ 100 (bar)
20	8 ~ 210 (bar)
30	8 ~ 315 (bar)
40	12 ~ 420 (bar)

### Control Port (S)

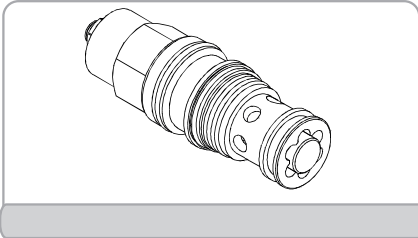


### Dimensions

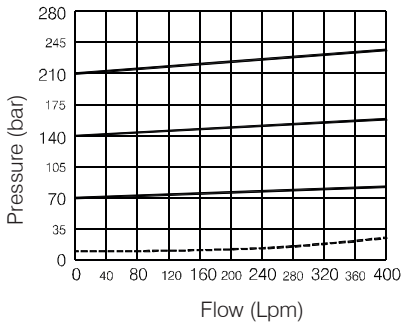


# WWRC SERIES CARTRIDGE TYPE RELIEF VALVES

## WWRC- 06 Series



### Performance



### Specifications

Model Number	Max. Pressure (bar)	Max. Flow (lpm)	Weight (Kg)
WWRC-06	420(6092 psi)	380(100.39 gpm)	0.55 (1.21 lbs)
Fluid Type		ISO VG 32, 46, 68	
Viscosity cSt		10~400 (59~1854 SSU)	
Operating Temperature		-15~70 (-5~158°F)	
Contamination Level		ISO4406.21/19/16 NAS1638,10	

### How To Order

1	2	3	4
WWRC	06	— * —	* — *

#### 1 Valve Series

WWRC=Cartridge Type Relief Valves

#### 2 Subplate Mounting Size

06 :T-16A Cavity :CST-16A

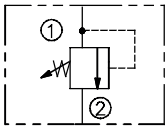
#### 4 Adjustment Option

NONE	NONE:TOOL ADJUST	
K	K:HAND-BAR ADJUST	

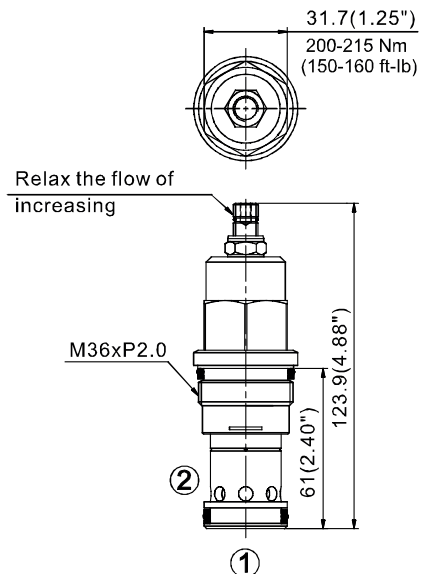
#### 3 Adjustment Pressure

Order	Adjustment pressure
06	※ ~ 60 (bar)
10	※ ~ 100 (bar)
20	8 ~ 210 (bar)
40	12 ~ 420 (bar)

### Control Port (S)

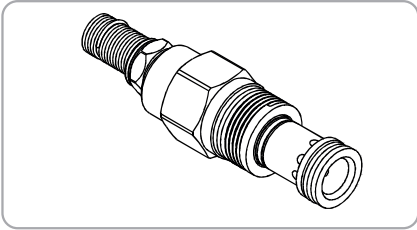


### Dimensions

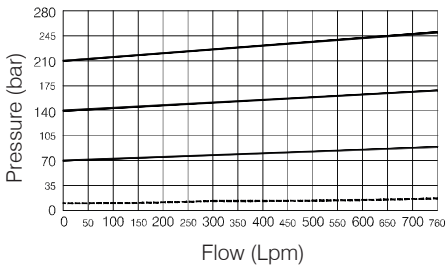


**WWRC SERIES CARTRIDGE TYPE RELIEF VALVES**

**WWRC- 10 Series**



**Performance**



**Specifications**

Model Number	Max. Pressure (bar)	Max. Flow (lpm)	Weight (Kg)
WWRC-06	420(6092 psi)	760(200.77 gpm)	1.27 (2.80 lbs)
Fluid Type		ISO VG 32, 46, 68	
Viscosity cSt		10~400 (59~1854 SSU)	
Operating Temperature		-15~70 (-5~158°F)	
Contamination Level		ISO4406.21/19/16 NAS1638,10	

**How To Order**

<b>1</b>	<b>2</b>	<b>3</b>	<b>4</b>
WWRC	10	—*	—*

**1 Valve Series**  
WWRC=Cartridge Type Relief Valves

**2 Subplate Mounting Size**  
10 :T-18A Cavity :CST-18A

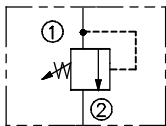
**4 Adjustment Option**

<b>NONE</b>	NONE:TOOL ADJUST	
<b>K</b>	K:HAND-BAR ADJUST	

**3 Adjustment Pressure**

Order	Adjustment pressure
<b>06</b>	※ ~ 60 (bar)
<b>10</b>	※ ~ 100 (bar)
<b>20</b>	8 ~ 210 (bar)
<b>40</b>	12 ~ 420 (bar)

**Control Port (S)**



**Dimensions**

