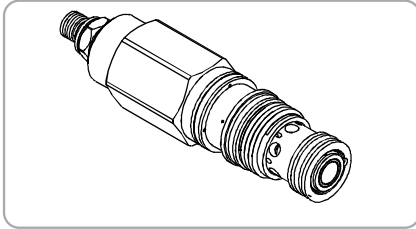


WWHC SERIES CARTRIDGE DIRECT ACTING TYPE CHECK SEQUENCE VALVES

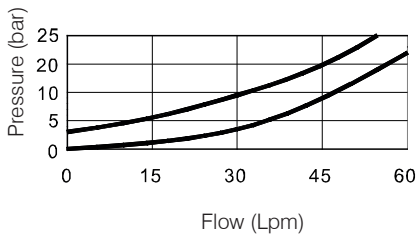
WWHC - 02 Series



Description

Direct-acting sequence valves with reverse-flow check will supply a secondary circuit with flow once the pressure at the port 1 (inlet) has exceeded the valve setting. Additionally, these valves incorporate an integral check valve to provide reverse flow from port 2 (sequence) to port 1 (inlet).

Performance



Specifications

Model Number	Max. Pressure (bar)	Max. Flow (lpm)	Weight (Kg)
WWHC-02	350 (5076psi)	60 (15.85 gpm)	0.22 (0.48 lbs)
Fluid Type		ISO VG 32, 46, 68	
Viscosity		10~400 (59~1854 SSU)	
Operating Temperature		-15~70 (-5~158°F)	
Contamination Level		ISO4406.21/19/16 NAS1638,10	

How To Order

1	2	3	4	5
WWHC	02	- *	- *	- *

1 Valve Series

WWHC=Cartridge Direct Acting Type Check Sequence Valve

2 Subplate Mounting Size

02 :T-11A Cavity :CST-11A

3 Adjustment Pressure

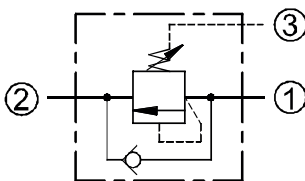
Order	Adjustment pressure
05	14 ~ 55 (bar)
10	20 ~ 105 (bar)
20	35 ~ 210 (bar)
30	55 ~ 315 (bar)
40	140 ~ 420 (bar)

4 Adjustment Option

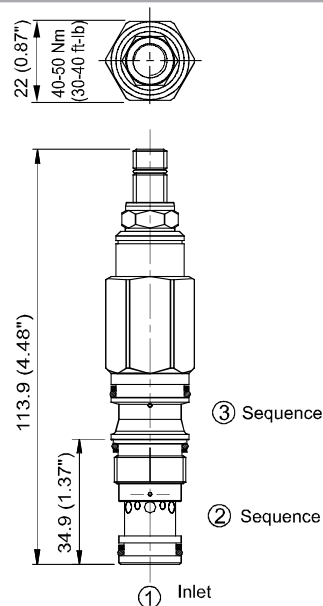
NONE	NONE:TOOL ADJUST	
K	K:HAND-BAR ADJUST	

5 Desing No.

Control Port (S)

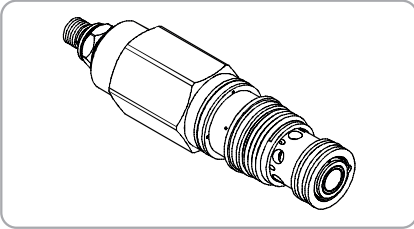


Dimensions



WWHC SERIES CARTRIDGE DIRECT ACTING TYPE CHECK SEQUENCE VALVES

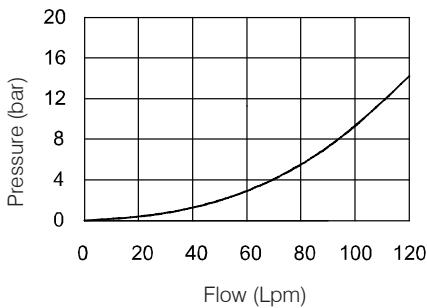
WWHC - 03 Series



Description

Direct-acting sequence valves with reverse-flow check will supply a secondary circuit with flow once the pressure at the port 1 (inlet) has exceeded the valve setting. Additionally, these valves incorporate an integral check valve to provide reverse flow from port 2 (sequence) to port 1 (inlet).

Performance



Specifications

Model Number	Max. Pressure (bar)	Max. Flow (lpm)	Weight (Kg)
WWHC-03	350 (5076 psi)	120(31.7 gpm)	0.4 (0.88 lbs)
Fluid Type		ISO VG 32, 46, 68	
Viscosity cSt		10~400 (59~1854 SSU)	
Operating Temperature		-15~70 (-5~158°F)	
Contamination Level		ISO4406.21/19/16 NAS1638,10	

How To Order

1	2	3	4	5
WWHC	03	-	*	-

1 Valve Series

WWHC=Cartridge Direct Acting Type Check Sequence Valve

2 Subplate Mounting Size

03 :T-2A Cavity :CST-2A

3 Adjustment Pressure

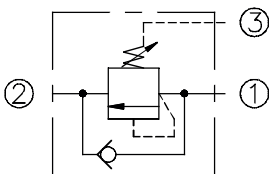
Order	Adjustment pressure
05	14 ~ 55 (bar)
10	20 ~ 105 (bar)
20	35 ~ 210 (bar)
30	55 ~ 315 (bar)
40	140 ~ 420 (bar)

4 Adjustment Option

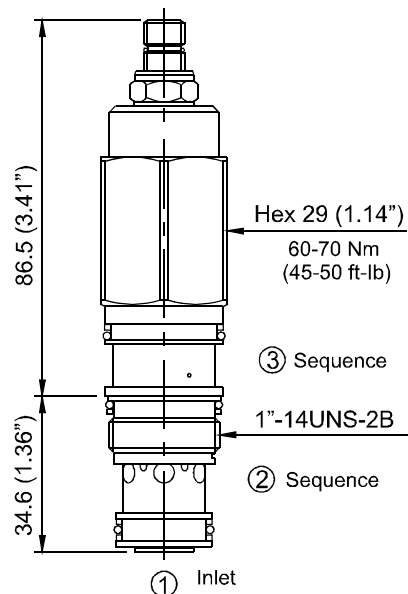
NONE	NONE:TOOL ADJUST	
K	K:HAND-BAR ADJUST	

5 Desing No.

Control Port (S)

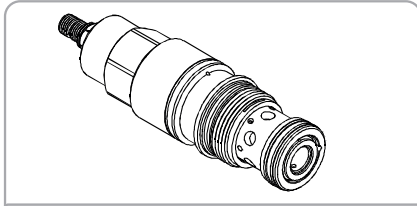


Dimensions



WWHC SERIES CARTRIDGE DIRECT ACTING TYPE CHECK SEQUENCE VALVES

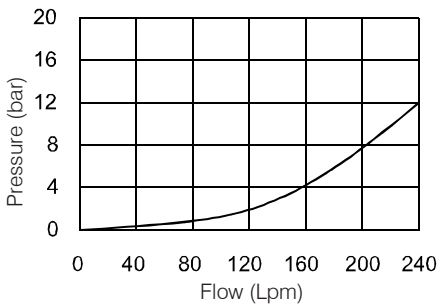
WWHC -06 Series



Description

Direct-acting sequence valves with reverse-flow check will supply a secondary circuit with flow once the pressure at the port 1 (inlet) has exceeded the valve setting. Additionally, these valves incorporate an integral check valve to provide reverse flow from port 2 (sequence) to port 1 (inlet).

Performance



Specifications

Model Number	Max. Pressure (bar)	Max. Flow (lpm)	Weight (Kg)
WWHC-06	350 (5076 psi)	240 (63.4 gpm)	0.76 (1.68 lbs)
Fluid Type		ISO VG 32, 46, 68	
Viscosity cSt		10~400 (59~1854 SSU)	
Operating Temperature		-15~70 (-5~158°F)	
Contamination Level		ISO4406.21/19/16 NAS1638,10	

How To Order

1	2	3	4	5
WWHC	06	-	*	-
			*	-
			*	-
			*	-

1 Valve Series
WWHC= Cartridge Direct Acting Type
Check Sequence Valve

2 Subplate Mounting Size
06 :T-17A Cavity :CST-17A

3 Adjustment Pressure

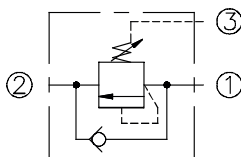
Order	Adjustment pressure
05	14 ~ 55 (bar)
10	20 ~ 105 (bar)
20	35 ~ 210 (bar)
30	55 ~ 315 (bar)
40	140 ~ 420 (bar)

4 Adjustment Option

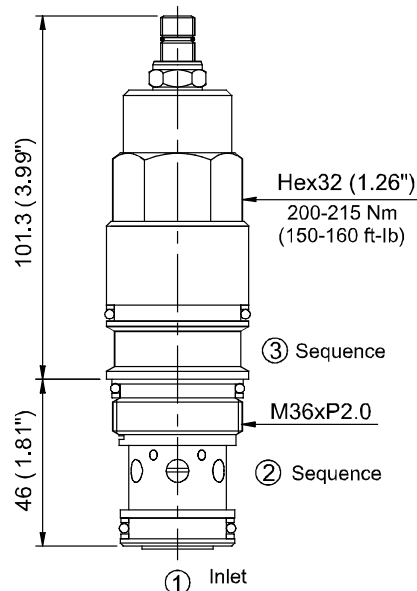
NONE	NONE:TOOL ADJUST	
K	K:HAND-BAR ADJUST	

5 Desing No.

Control Port (S)

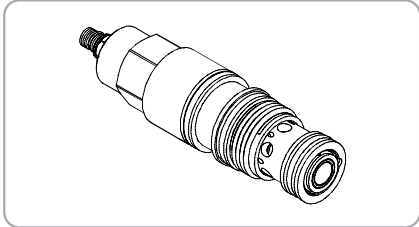


Dimensions



WWHC SERIES CARTRIDGE DIRECT ACTING TYPE CHECK SEQUENCE VALVES

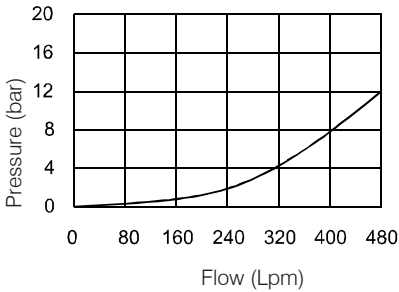
WWHC- 10 Series



Description

Direct-acting sequence valves with reverse- flow check will supply a secondary circuit with flow once the pressure at the port 1 (inlet) has exceeded the valve setting. Additionally, these valves incorporate an integral check valve to provide reverse flow from port 2 (sequence) to port 1 (inlet) .

Performance



Specifications

Model Number	Max. Pressure (bar)	Max. Flow (lpm)	Weight (Kg)
WWHC-10	350 (5076 psi)	480 (126.8 gpm)	1.7 (3.75 lbs)
Fluid Type		ISO VG 32, 46, 68	
Viscosity		10~400 (59~1854 SSU)	
Operating Temperature		-15~70 (-5~158°F)	
Contamination Level		ISO4406.21/19/16 NAS1638,10	

How To Order

1	2	3	4	5
WWHC	10	- *	- *	- *

1 Valve Series

WWHC=Cartridge Direct Acting Type
Check Sequence Valve

2 Subplate Mounting Size

10 :T-19A Cavity :CST-19A

3 Adjustment Pressure

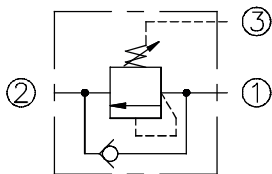
Order	Adjustment pressure
05	14 ~ 55 (bar)
10	20 ~ 105 (bar)
20	35 ~ 210 (bar)
30	55 ~ 315 (bar)
40	140 ~ 420 (bar)

4 Adjustment Option

NONE	NONE:TOOL ADJUST	
K	K:HAND-BAR ADJUST	

5 Desing No.

Control Port (S)



Dimensions

