

# WVR SERIES PROPORTIONAL RELIEF VALVES

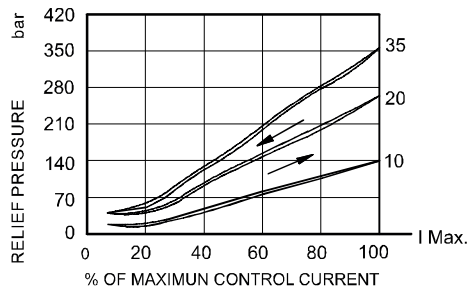
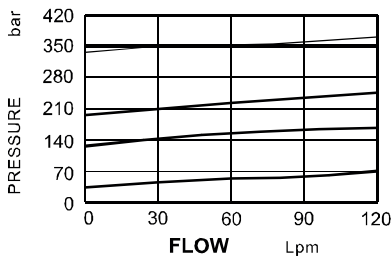
## WVR SERIES



### Speciality

Model Number	Maximum Pressure [bar]	Maximum Flow [lpm]	Weight [kg]
WVR-10	350(5076 psi)	120 (32 gpm)	0.3(0.66 lbs)
Fluid Type	ISO VG 32,46,68		
Viscosity	10~400 (59~1854 SSU)		
Operating Temperature	-15~70(-5~158 °F)		
Contamination	ISO4406.21/19/16 NAS1638,10		

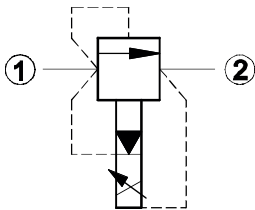
### Performance



### How To Order

<b>1</b>	<b>2</b>	<b>3</b>
<b>WVR</b>	<b>10</b>	<b>- 10</b>

### Control Port(s)



**1 Valve Series**  
WVR=Proportional Relief Valves

**2 Subplate Mounting Size**  
Size :10  
Cavity:CS10-2N

**3 Adjustment Pressure**

Order	Adjustment pressure
<b>10</b>	15 ~ 140 (bar)
<b>25</b>	30 ~ 250 (bar)
<b>35</b>	35 ~ 350 (bar)

**4 Adjustment Option**  
Model number : COS12  
See Appendixes-D  
Coils must be ordered separately

### Dimensions

