

WINMAN SOLENOID VALVES

WVL0.S08 Valve Series



SAE Cartridge - 250 bar NO Single Lock Pilot Operated - Poppet Type

Description

Solenoid operated, 2-way 2-positions, normally closed, piloted poppet type, screw-in cartridge valve. Typically used as a blocking or load holding device for high pressure circuits. When the coil is de-energized, the SVL0.S08 acts as check valve allowing free flow from 1 to 2, while blocking from 2 to 1. When the coil is energized the poppet lifts and opens the 2 to 1 flow path. In this operation mode, flow from 1 to 2 is severely restricted.

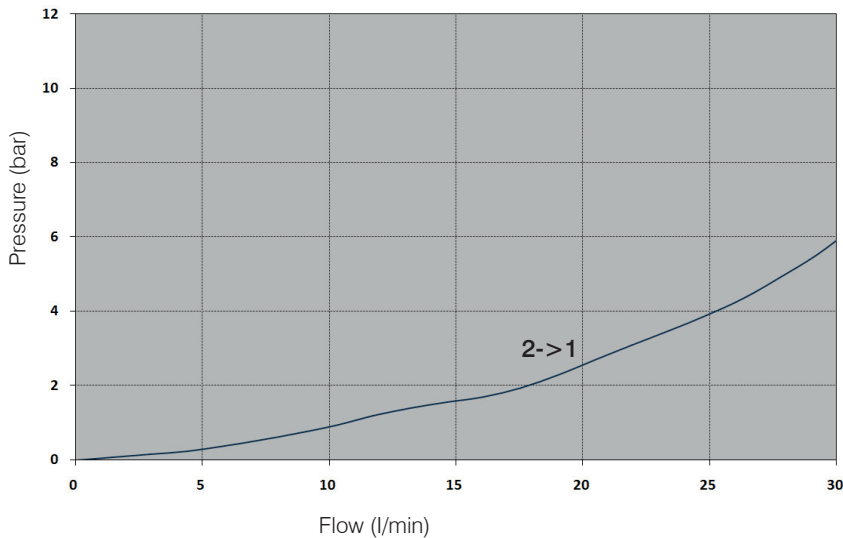
The rigid design using a 1-piece body contributes to minimize the effect of eccentricities in cavity and provides great reliability. Low pressure drop thanks to optimized flow path.

Technical Features

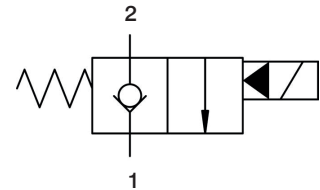
All external surfaces are zinc plated and corrosion-proof.
All valve parts are made of high strength steel. Poppet is hardened and ground to ensure minimal wear and extended service life.
Coil seals protect the solenoid system.
Manual override options.
Industry SAE common cavity.

Performance Details

Note : For information about operating limits, please contact the factory.



Symbols

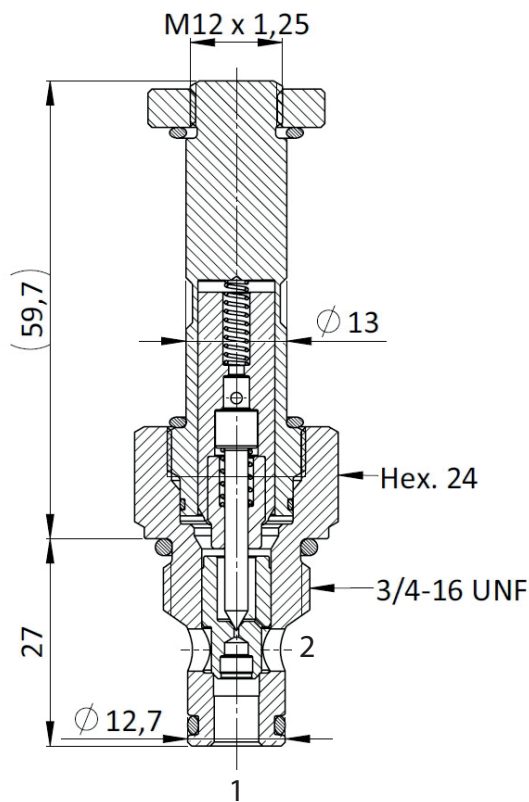


Technical Data

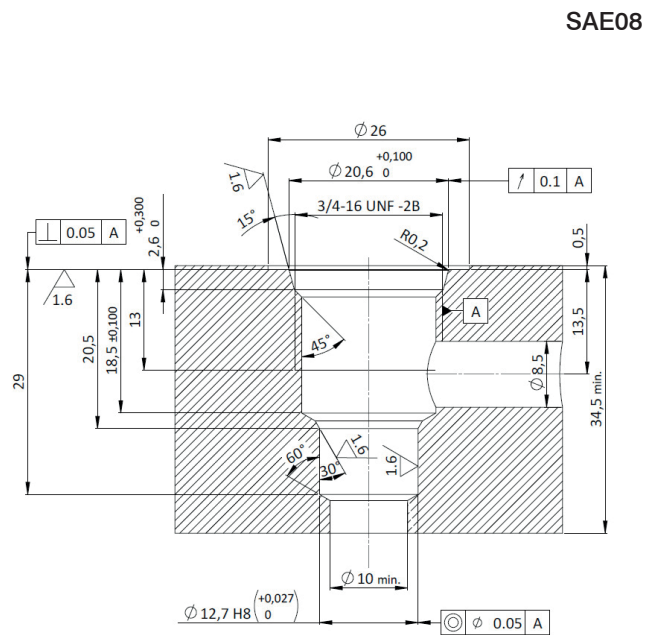
Maximum operating pressure: 250 bar
Maximum flow: 30 l/min
Internal leakage: max 5 drops/min @ 250 bar
Response time: Energized 30 ms,
De-energized 50 ms (typical 24V DC coil)
Temperature: -30°C to 110°C
Fluids: Mineral-based or synthetics with lubricating properties at viscosities of 7.4 to 420 cSt
Minimum pull-in voltage: 85% of nominal
Orientation: no restrictions
Installation torque: 40-45 Nm
Seal kit code: SK.030 and SK.027 (coil)
Weight: 0.120 kg
NOTE: The performance chart illustrates flow handling capacity in both directions (1 to 2 de-energized, 2 to 1 energized).
P/Q curve is recorded at TOil = 40°C and 46 cSt

WINMAN SOLENOID VALVES

Cross Section



Cavity Details



Ordering Code

W V L 0 • S 0 8 • 0 * • * 0 0

Valve basic code

Cavity

Manual override

Marking

S08 = 3/4-16 UNF with Ø12,7 nose size

Other available options:

S09 = 3/4-16 UNF with Ø15,86 nose size

M20 = M20 x 1,5 with Ø15 nose size

0=Standard factory marking

Customized markings can be done upon request

Manual Override

Model Code	Type of override
0	No override
1	Push pin
2	Push knob
6	Screw

Filtration

Model Code	Type of override
N	No filter
F	Standard filter (mesh size 280 mm)

Coil



Use 18W coil to operate this valve.