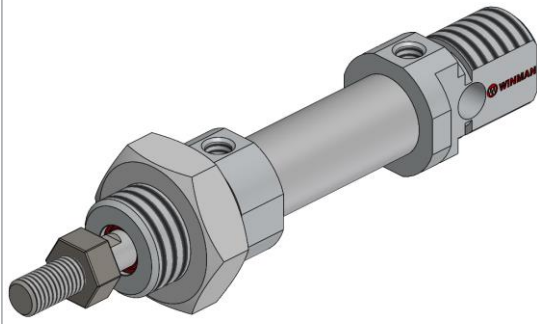
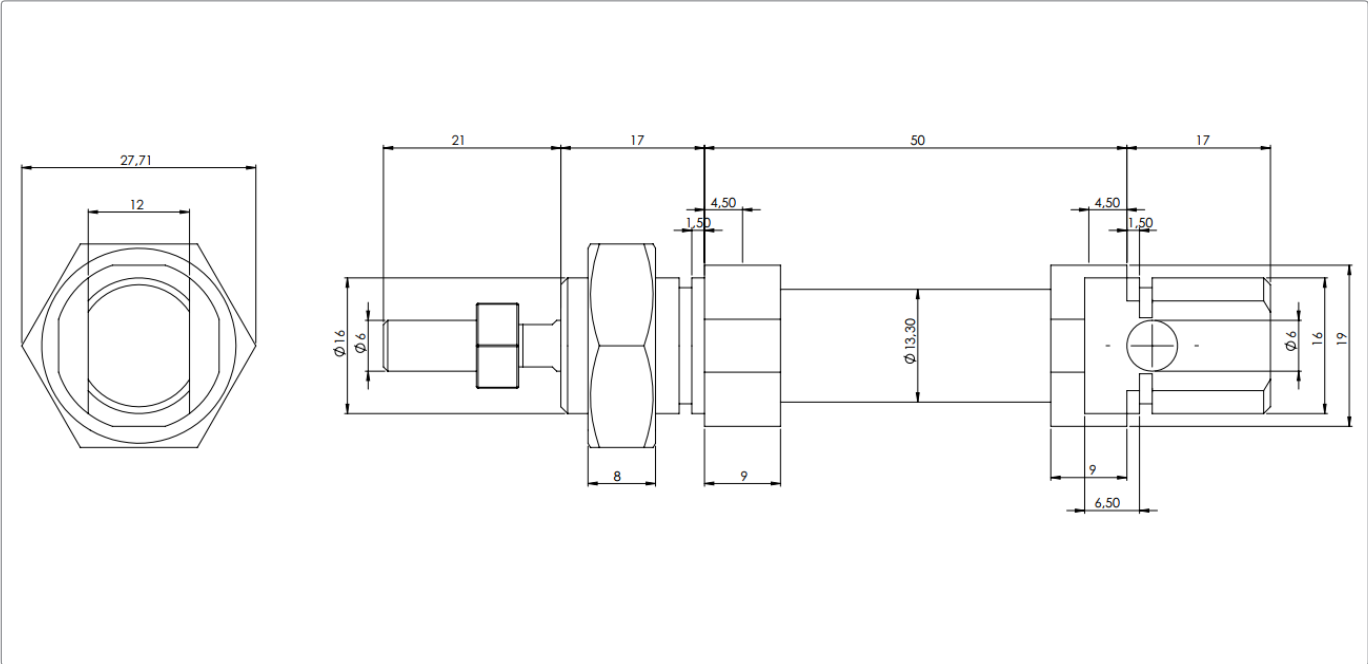


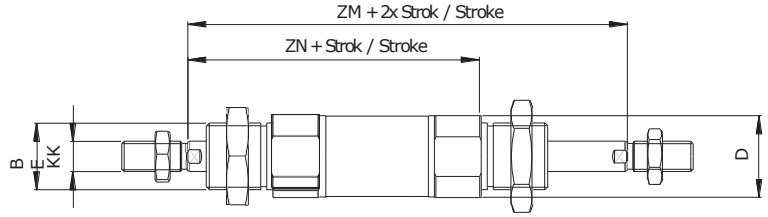
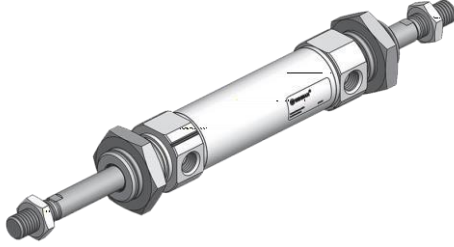
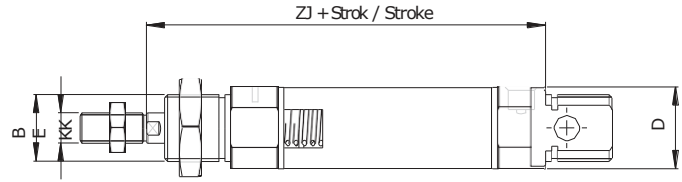
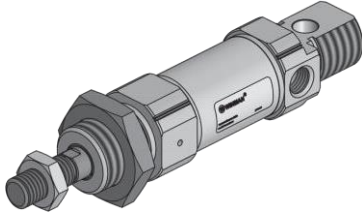
WSSC 012 - Serisi ISO 6432 Silindirler / WSSC 012 - Series ISO 6432 Cylinders

Özellikler / Specification

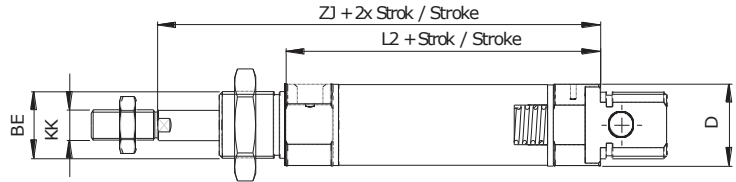
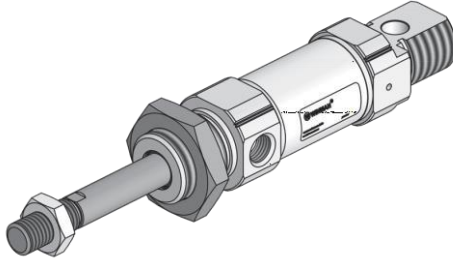
| | |
|---------------------------------------|---|
| Piston Çapı / Bore Size | 12 |
| Çalışma Tipi / Acting Type | Çift Etkili / Double Acting |
| Akışkan / Fluid | Hava (40µm filtrelenmiş) / Air (40µm filtered) |
| Çalışma Basıncı / Op. Pressure | < 10 Bar |
| Sıcaklık / Temperature | 0 ~ +80 °C |
| Manyetik / Magnetic | Opsiyonel / Optional |
| Hız / Speed Range | < 800 mm/s |
| Sensör / Sensör Switches | WT-50 + BL01 |

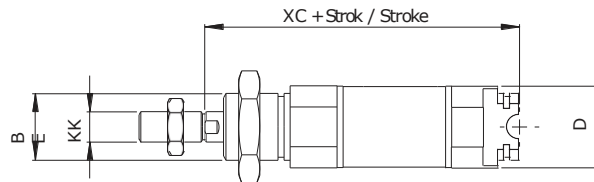
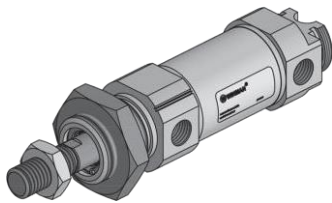
Teknik Çizim / Technical Drawing

Sipariş Kodu / Ordering Code

| MODEL | OPSİYON OPTIONS | MANYETİK MAGNETIC | YASTIKLAMA CUSHONING | ÇAP DIA. | STROK STROKE | MİL UZUNLUĞU ROD LENGHT | DİŞ TİPİ SCREW TYPE | DİŞ ÖLÇÜSÜ SCREW SIZE | DİŞ UZUNLUĞU SCREW LENGHT |
|-------|--------------------|----------------------|-------------------------|-------------|-----------------|----------------------------------|------------------------|--------------------------------|---------------------------------|
| WSSC | D | M | YY | 012 | 0050 | L25 | F | ZM8.H1.0 | E15 |

| BOŞ: STANDART | | BOŞ: MANYETİKSİZ | BOŞ: YASTIKSIZ | PİSTON ÇAPİ (mm) Piston Dia | STROK (mm) Stroke | LX (mm) | F : DİŞİ Female | Zx : ÇAP Dia | Ex (mm) |
|---|---------------------------------------|---------------------------------|---------------------------------|-----------------------------------|----------------------|------------------------------------|---------------------------------------|---------------------|------------------------------------|
| D : ÇİFT MİLLİ - Double Rod | - Blank Standart | Blank : Without Magnet | Blank : Uncushioned | | | - | BOŞ : STANDART Blank : Standart | Hx : Hatve Pitch | BOŞ : STANDART Blank : Standart |
| J : STROK AYARLI - Stroke Adjustable | - Front Spring (Up to 50mm) | M : MANYETİK M : With Magnet | YY : YASTIKLI YY : Cushioned | | | BOŞ : STANDART Blank : Standart | | | BOŞ : STANDART Blank : Standart |
| HR: DÖNMEZ MİLLİ - Hezagonal Roc | - Rear Spring (Up to 50mm) | | | | | | | | |
| FS : ÖNDEN YAYLI (50mm ye Kadar) | - Heat Resistance (Up to 150°C) | | | | | | | | |
| RS : ARKADAN YAYLI (50mm ye Kadar) | | | | | | | | | |
| V : SICAGA DAYANIKLI 150° Sıcaklığa Kadar | | | | | | | | | |

WSSC 012 - Serisi ISO 6432 Silindirler / WSSC 012 - Series ISO 6432 Cylinders
Çift Milli Silindirler / Trough Rod Cylinders
WSSC.M.YY.012.0050.D
Ø Strok / Stroke

Önden Yaylı Silindirler / Single Act. Front Spring Cylinders
WSSC.M.YY.012.0050.FY
Ø Strok / Stroke

 50 mm kurs üzeri için bilgi alınız.
 Contact us above 50 mm stroke

Arkadan Yaylı Silindirler / Rear Spring Cylinders
WSSC.M.YY.012.0050.RY
Ø Strok / Stroke

 50 mm kurs üzeri için bilgi alınız.
 Contact us above 50 mm stroke

Kısaltılmış Silindirler / Short Cap Cylinders
WSSC.M.YY.012.0050.K3
Ø Strok / Stroke


| Ø mm | ZM | ZN | ZJ | L2 | XC ±1 | BE | KK | D Ø |
|------|----|----|----|----|-------|----------|---------|-----|
| 12 | 94 | 72 | 72 | 50 | 75 | M16X1.50 | M6X1.00 | 20 |