

Quick Connecting Tube Fittings

WPMF SERIES



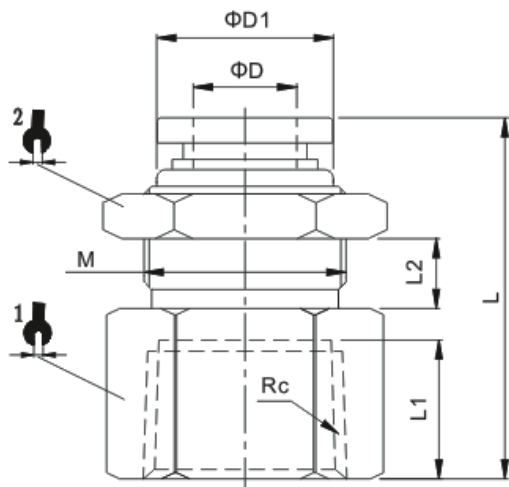
Product features

One-Touch tube fittings are used in pneumatics piping.
 The tube fittings come in wide variety of models to meet all your needs in pneumatics piping.
 Even after installation, in direction of the tube can be changed freely.
 Nickel-plated metal body ensures Anti-Corrosion and Anti-Contamination.
 All R and NPT threads are Pre-Costed sealant.
 All cylindrical threads are standard with O-Ring seals.

Speciality

| | |
|-----------------------|------------------------|
| Fluid | Air, Vacuum |
| Operating Pressure | 0-1.0MPa (150 psi) |
| Negative Pressure | -100KPa(-29.5 in-Hg) |
| Max Pressure | 1.5MPa |
| Operating Temperature | 0-60°C(32-140°F) |
| Applicable Tube | Polyurethane and Nylon |

Dimension



| MODEL | φD | Rc | L | L1 | L2 | φD1 | | | M |
|-----------|----|-------|------|-----|-----|-----|----|----|-------|
| WPMF04-01 | 4 | Rc1/8 | 24 | 8.5 | 6 | 10 | 14 | 14 | M12X1 |
| WPMF04-02 | 4 | Rc1/4 | 26.5 | 11 | 6 | 10 | 17 | 14 | M12X1 |
| WPMF06-01 | 6 | Rc1/8 | 24.8 | 8.5 | 7 | 12 | 17 | 17 | M14X1 |
| WPMF06-02 | 6 | Rc1/4 | 29.5 | 11 | 7 | 12 | 17 | 17 | M14X1 |
| WPMF06-03 | 6 | Rc3/8 | 30.5 | 12 | 7 | 12 | 21 | 17 | M14X1 |
| WPMF06-04 | 6 | Rc1/2 | 33 | 14 | 7 | 12 | 24 | 17 | M14X1 |
| WPMF08-01 | 8 | Rc1/8 | 26.5 | 8.5 | 7.5 | 14 | 19 | 19 | M16X1 |
| WPMF08-02 | 8 | Rc1/4 | 32 | 11 | 7.5 | 14 | 19 | 19 | M16X1 |
| WPMF08-03 | 8 | Rc3/8 | 34.3 | 12 | 7.5 | 14 | 21 | 19 | M16X1 |
| WPMF08-04 | 8 | Rc1/2 | 36.5 | 14 | 7.5 | 14 | 24 | 19 | M16X1 |
| WPMF10-01 | 10 | Rc1/8 | 30 | 8.5 | 9.5 | 17 | 24 | 24 | M20X1 |
| WPMF10-02 | 10 | Rc1/4 | 32.5 | 11 | 9.5 | 17 | 24 | 24 | M20X1 |
| WPMF10-03 | 10 | Rc3/8 | 34 | 12 | 9.5 | 17 | 24 | 24 | M20X1 |
| WPMF10-04 | 10 | Rc1/2 | 38 | 14 | 9.5 | 17 | 24 | 24 | M20X1 |
| WPMF12-01 | 12 | Rc1/8 | 31.5 | 8.5 | 10 | 20 | 24 | 26 | M22X1 |
| WPMF12-02 | 12 | Rc1/4 | 34 | 11 | 10 | 20 | 24 | 26 | M22X1 |
| WPMF12-03 | 12 | Rc3/8 | 35 | 12 | 10 | 20 | 24 | 26 | M22X1 |
| WPMF12-04 | 12 | Rc1/2 | 37 | 14 | 10 | 20 | 24 | 26 | M22X1 |