

## Push-in Fittings

### WPCT-G SERIES



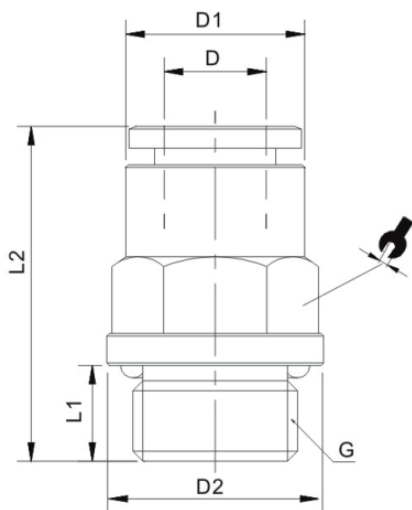
#### Product features

- It's made of copper pneumatic piping joints
- Not only the body but also the sleeve, both of them are made from copper, which is good for flame resistance, heat resistance and splash performance

#### Speciality

Operating Temperature	-20~+80°C
Operating Pressure	0-1.0MPa
Fluid	Aia, Vacuum
Applicable Tube	Polyurethane and Nylon

#### Dimension



MODEL	φD	G	L1	L2	φD1	φD2	
WPCT04-G01	4	G1/8	5.5	19.4	8.5	14	10
WPCT04-G02	4	G1/4	7.5	20	8.5	17	10
WPCT06-G01	6	G1/8	5.5	23.8	12	14	12
WPCT06-G02	6	G1/4	7.5	22.5	12	17	12
WPCT06-G03	6	G3/8	7.5	21.5	12	20	12
WPCT06-G04	6	G1/2	10	23	12	24	12
WPCT08-G01	8	G1/8	5.5	28	14	14	14
WPCT08-G02	8	G1/4	7.5	27	14	17	14
WPCT08-G03	8	G3/8	7.5	22.4	14	20	14
WPCT08-G04	8	G1/2	10	24	14	24	14
WPCT10-G01	10	G1/8	5.5	30	16	14	16
WPCT10-G02	10	G1/4	7.5	32	16	17	17
WPCT10-G03	10	G3/8	7.5	28	16	20	17
WPCT10-G04	10	G1/2	10	24.5	16	24	17
WPCT12-G02	12	G1/4	7.5	33.7	18	17	19
WPCT12-G03	12	G3/8	7.5	29.7	18	20	20
WPCT12-G04	12	G1/2	10	28	18	24	19