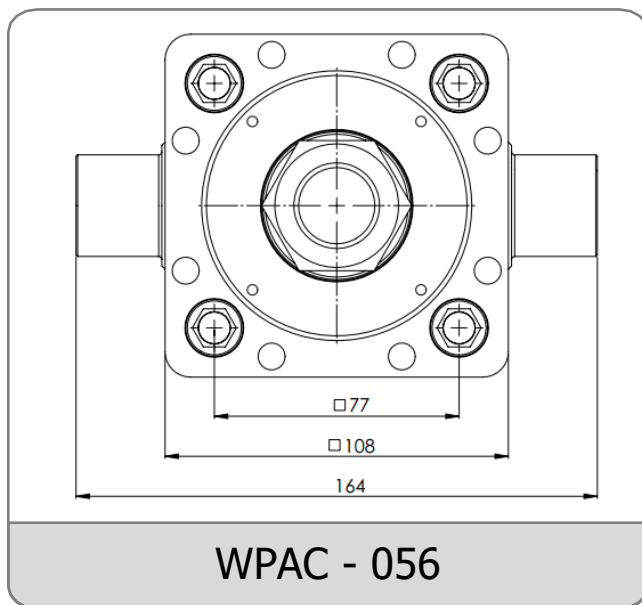


Ordering Code
WPAC - 0 5 6 - - - - -

1	2	3	4	5	6	7
---	---	---	---	---	---	---

Model	Size	Stroke	Pitch	Mounting Kit Model	Mounting Kit Assembly	Assembly Accessories
-------	------	--------	-------	--------------------	-----------------------	----------------------

1-Model
WPAC: Series Linear Actuators
2-Size

3-Stroke
0000 : Maximum 1500 mm

Movement Stroke

In addition to the desired movement stroke, it is recommended to leave a space on both sides until 2 x Pitch.

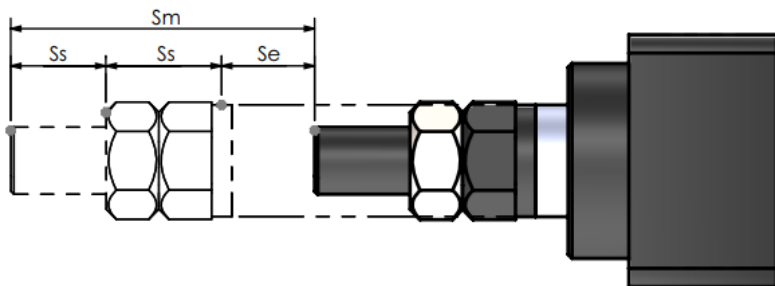
$$S_m = S_e + 2 \times S_s$$

$$S_s = 2 \times p$$

S_m : Movement Stroke

S_e : Safety Stroke

P : Pitch



Ordering Code

WPAC - 056 - - - - -

1

Model

2

Size

3

Stroke

4

Pitch

5

Mounting Kit Model

6

Mounting Kit Assembly

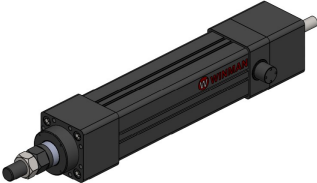
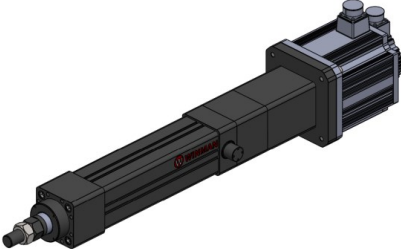
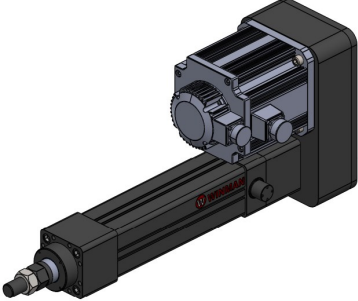
7

Assembly Accessories

4-Pitch

Drive Unit	Screw
Actuator Model	10
WPAC - 056	+

5-Mounting Kit Model

		
00:Without Mounting (Standart)	WDAK : Axial Kit	WDPK : Parallel Kit

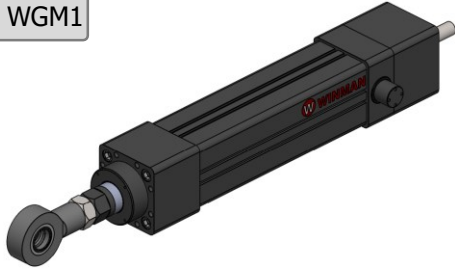
Note 1 : Please contact for different motor types and mounting sizes.

Note 2 : Please contact for to use reducer.

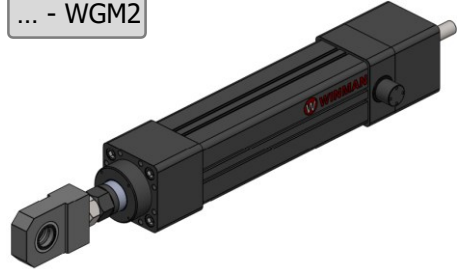
6-Assembly Accessories

Front Mounting

... - WGM1

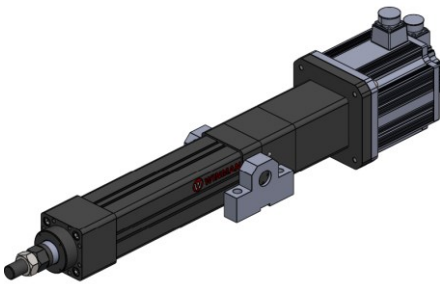


... - WGM2

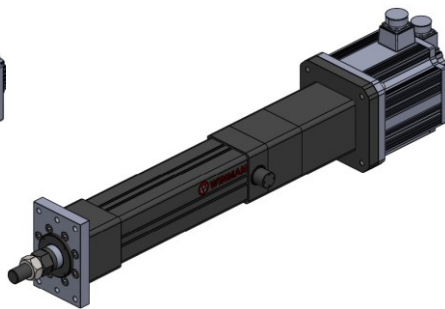


Mounting for Axial Kit

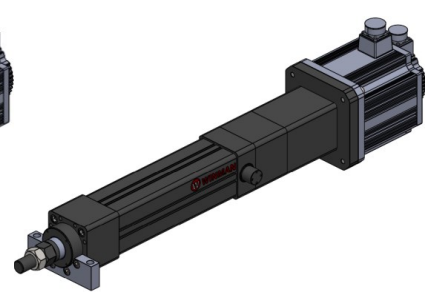
... - FTC



... - WFB

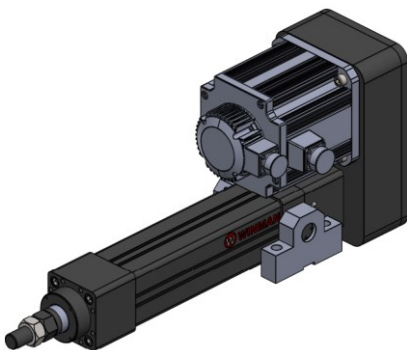


... - WAB

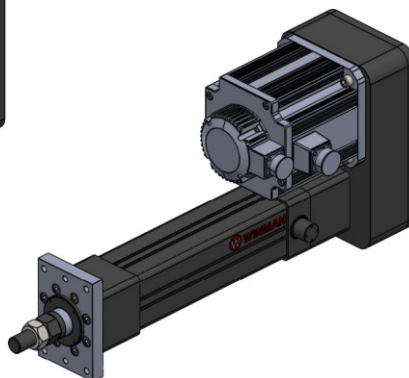


Mounting for Parallel Kit

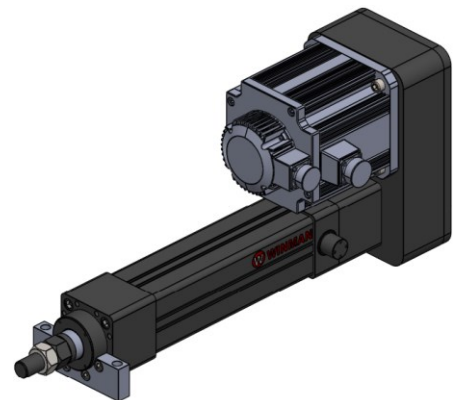
... - FTC

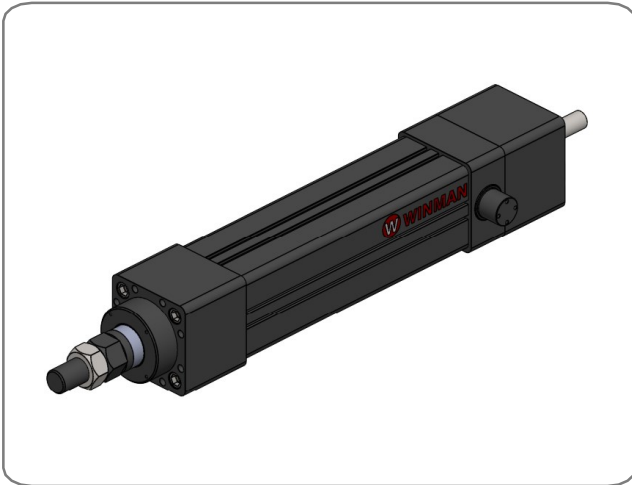


... - WFB



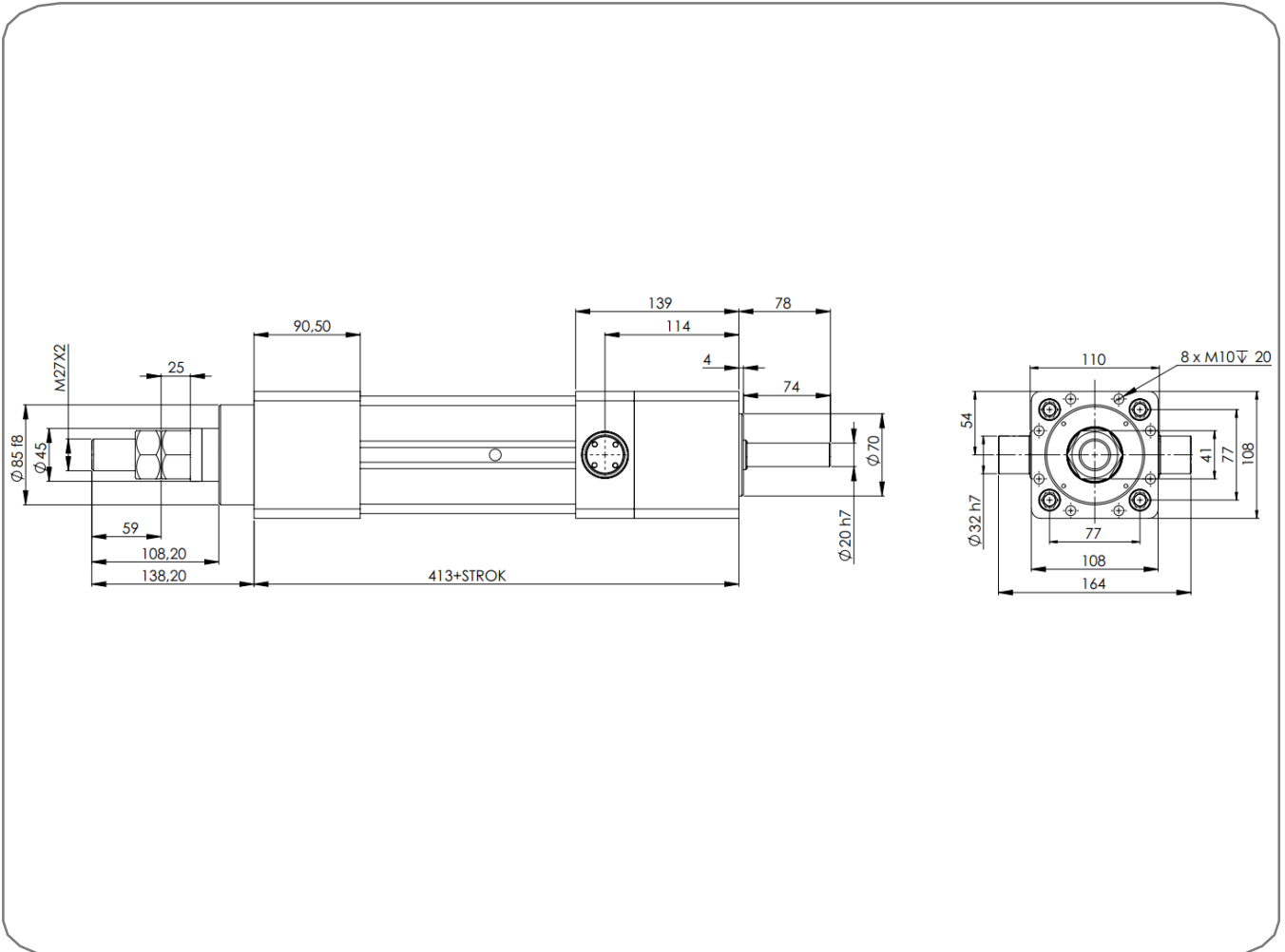
... - WAB



WINMAN WPAC-056 Series Linear Actuators


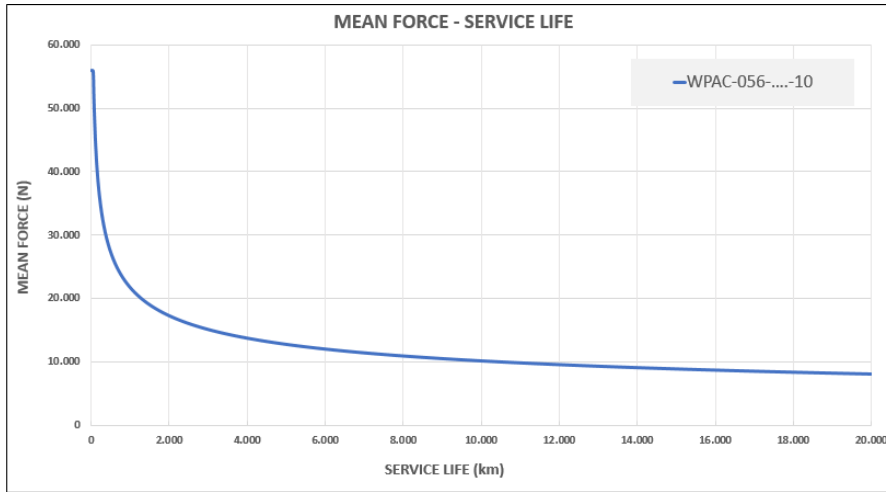
Specification		
Size		056
Maximum Axial Force	N	56000
Maximum Speed	m/s	0,5
Maximum Stroke	mm	1500
Acceleration	m/s ²	30

Note : Calculated value are theoretical values. We recommend you to calculate safety factor as five (5).

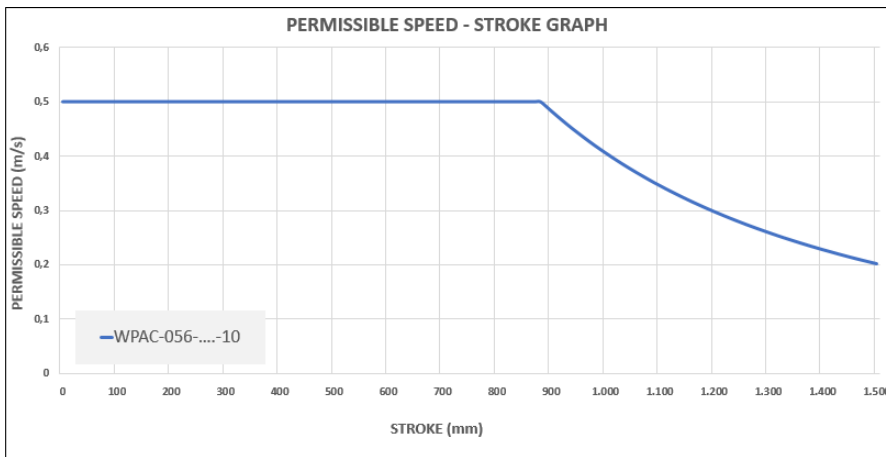
Technical Drawing


Technical Data

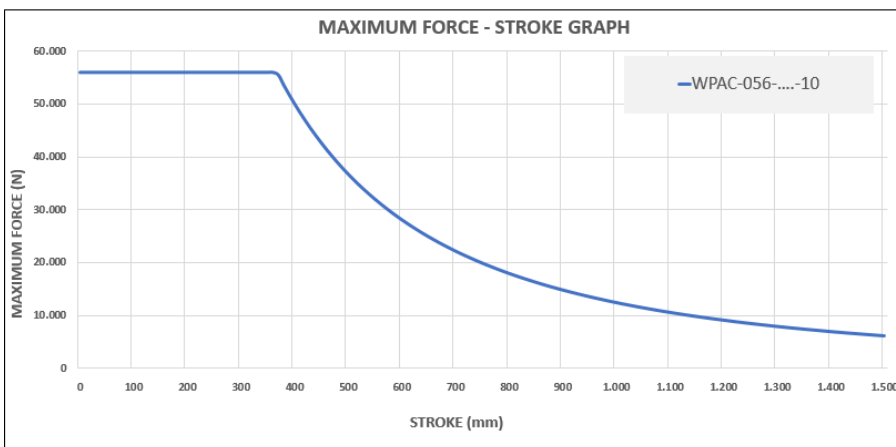
Mean Force/Service Life



Permissible Speed/Stroke

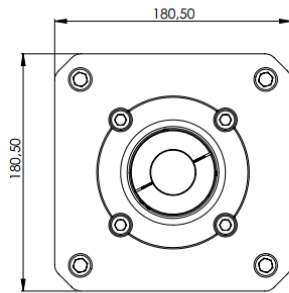
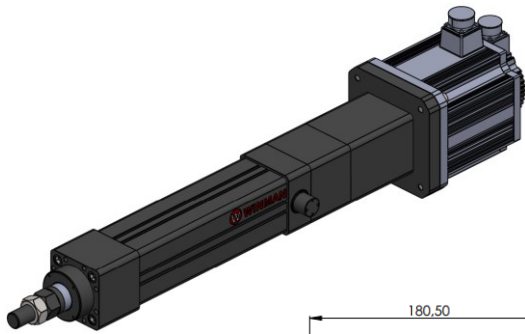


Maximum Force/Stroke

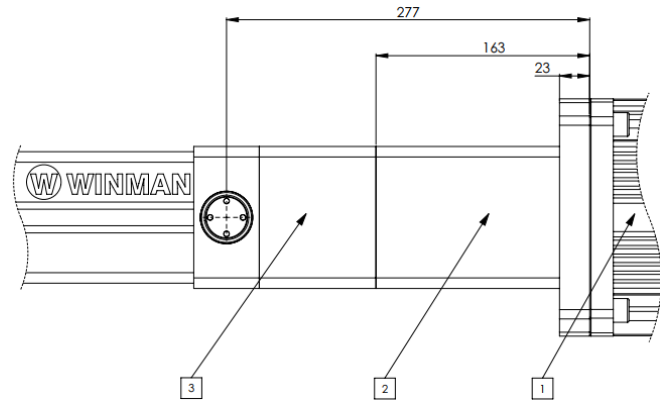


WDAK Axial Mounting Kit

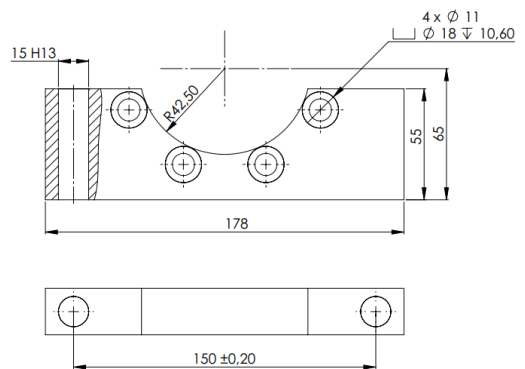
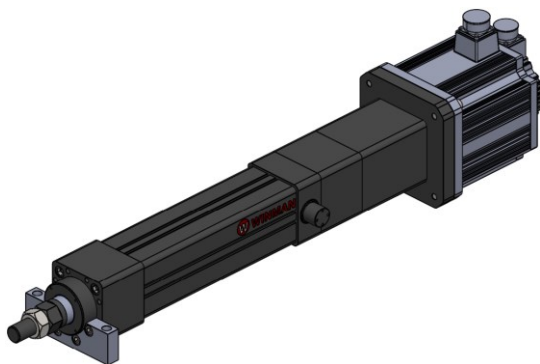
WDAK Technical Drawing



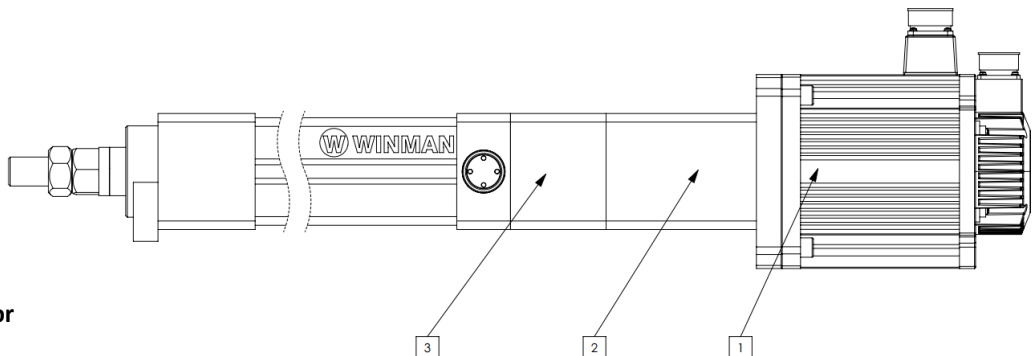
- 1 - Motor
- 2 - Axial Kit
- 3 - Linear Actuator



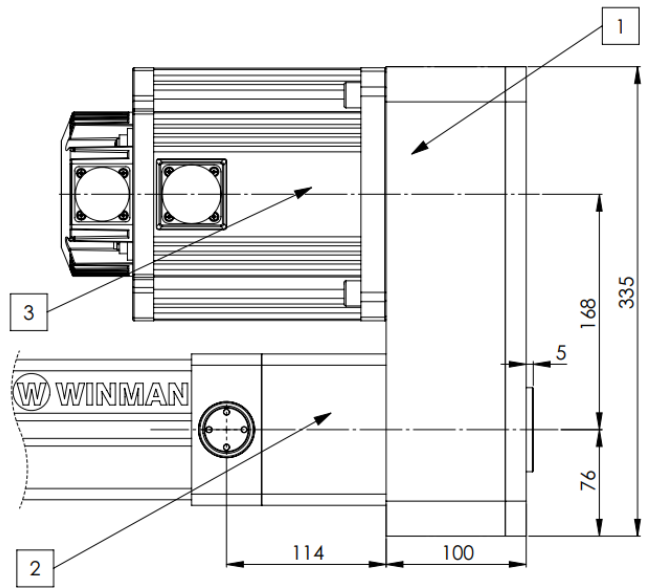
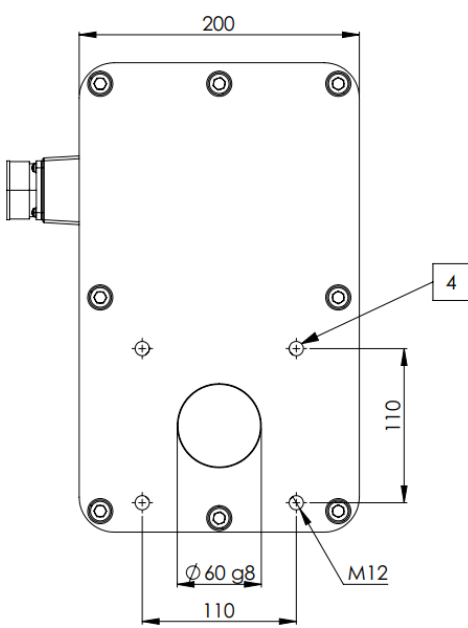
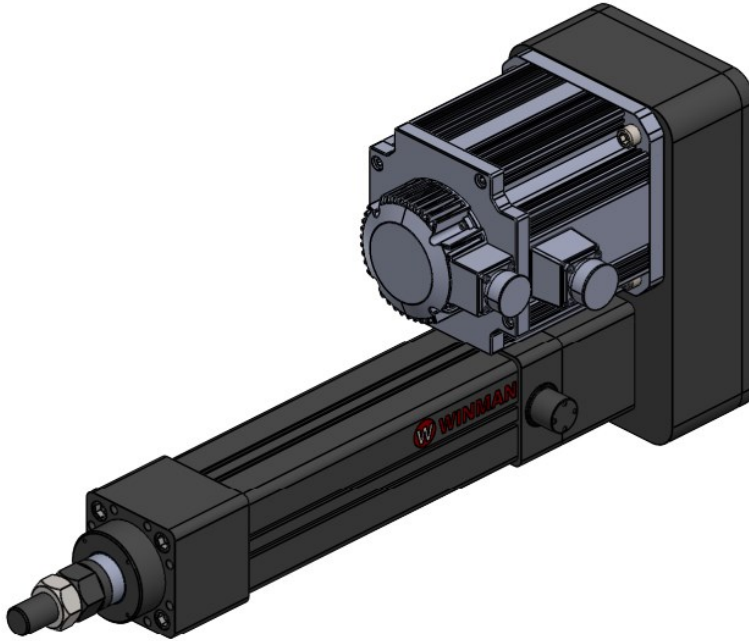
WDAK Axial Foot Mounting Kit



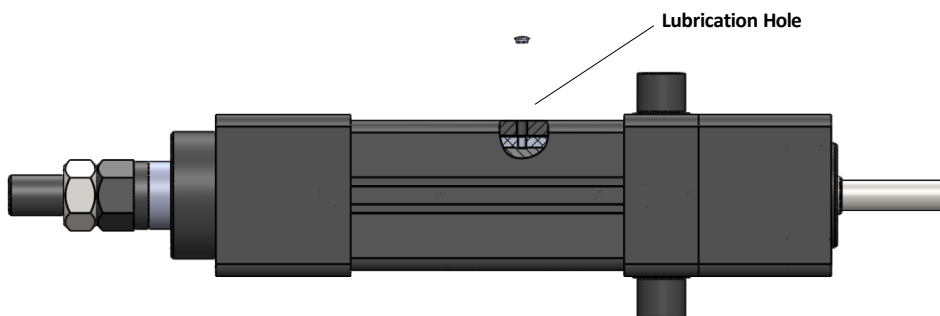
- 1 - Motor
- 2 - Axial Kit
- 3 - Linear Actuator



WDPK Parallel Mounting Kit



- 1 - Parallel Kit
- 2 - Linear Actuator
- 3 - Motor
- 4 - Mounting Thread

Maintenance


Basic lubrication is done in-factory before shipment.

Bearings of the ball screw have been lubricated for life and will not require in-service lubrication under normal operating conditions.

The profile of the linear actuator has port on the top side for access to the lube on the ball nut.

Re-lubrication should be carried out if the defined travel distance is completed or 400 operating hours are reached first. At the end of 2 years, it must be re-lubricated even if the travel distance and working hours are not reached.

For lubrication; set linear actuator to zero stroke position. Remove the grubs in the lubrication port lubricate the amount indicated in the table and replace the glue after lubrication, move the linear actuator at least three times along the stroke distance. the travel speed must not exceed 10 mm / s.

Linear actuators must be lubricated with suitable grease.

Lithium soap grease should be used.

Caution: Do not use grease containing graphite or MoS!

Lubrication quantity is provided in table by normal operating conditions.

Normal Working Conditions

Note : The lubrication quantity specified in the table is valid for normal operating conditions. The lubrication quantity may vary in different operating conditions. Get information for the lubrication quantity in different working conditions.

Ambient Temperature	°C	10 ~ 40 / -20 ~ 50
Speed	m/s	≤ 0,4
Screw Rotation Speed	rev/min	3000
Load	N	≤ 0,2 C
Stroke	mm	>85

Lubrication

Actuator Model		WPAC-056
Lubrication Period	km	600
	h	400
Lubrication Dose	cm³	3,7

Our company has the right to modify change images, dimensions and other datas which take place in this catalogue.