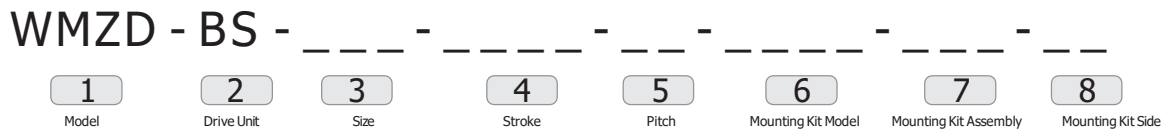
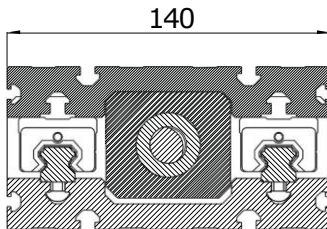


Ordering Code

1 - Model

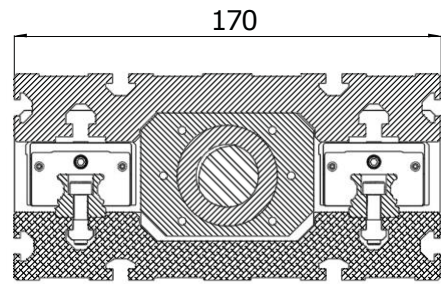
WMZD : Table Linear Module

2 - Drive Unit

BS : Ball Screw

3 - Size


WMZD - BS - 140



WMZD - BS - 170

4 - Stroke

WMZD - 140	0000 : Maximum 1200 mm
WMZD - 170	0000 : Maximum 1600 mm

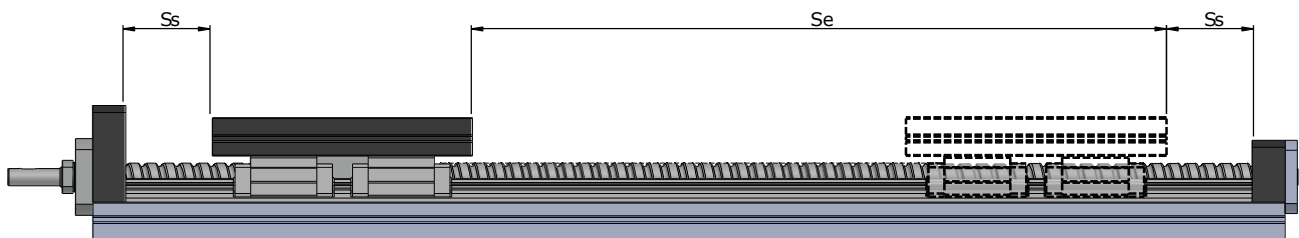
Movement Stroke

In addition to the desired movement stroke, it is recommended to leave a space on both sides until 2xPitch.

$$S_m = S_e + 2 \cdot S_s$$

$$S_s = 2 \cdot p$$

S_m : Movement Stroke
 S_e : Safety Stroke
 p : Ball Screw Pitch


5 - Pitch

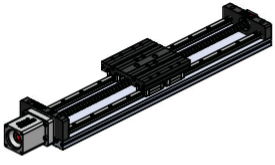
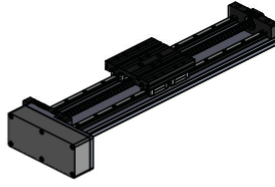
WMZD - 140	WMZD - 170	05 : 5 mm/rev
		10 : 10 mm/rev
		50 : 50 mm/rev

Ordering Code

WMZD - BS - _ _ _ - _ _ _ - _ _ _ - _ _ _ - _ _ _ - _ _ _


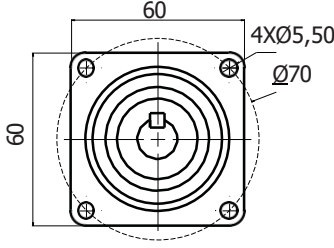
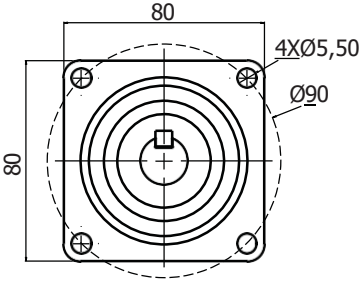
- | | | | | | | | |
|-------|------------|------|--------|-------|--------------------|-----------------------|-------------------|
| 1 | 2 | 3 | 4 | 5 | 6 | 7 | 8 |
| Model | Drive Unit | Size | Stroke | Pitch | Mounting Kit Model | Mounting Kit Assembly | Mounting Kit Side |

6 - Mounting Kit Model

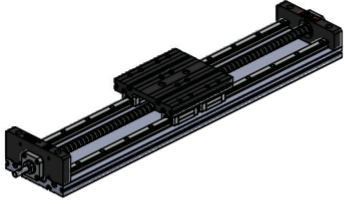
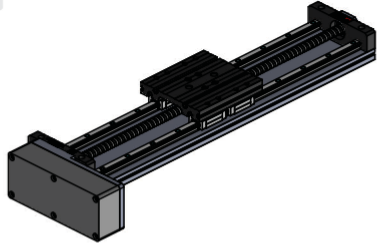
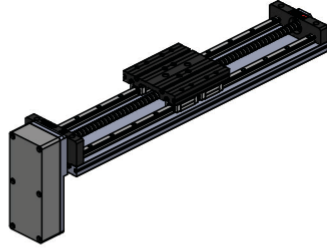
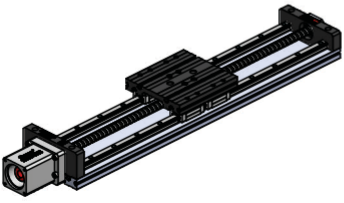
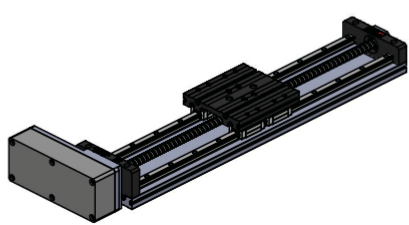
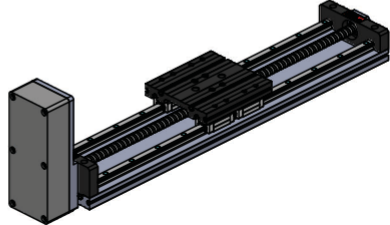
		
00 : Without Mounting	WDAK : Axial Kit	WDPK : Parallel Kit

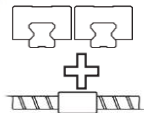
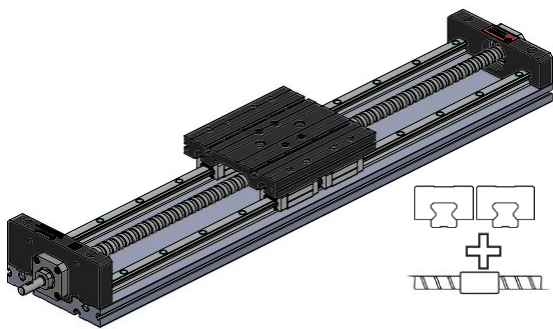
Note 1 : Please contact for different motor types and mounting sizes.
 Note 2 : Please contact for to use reducer.

7 - Mounting Kit Assembly

		
00 : Without Motor	070 : Ø70 motor mounting	090 : Ø90 motor mounting

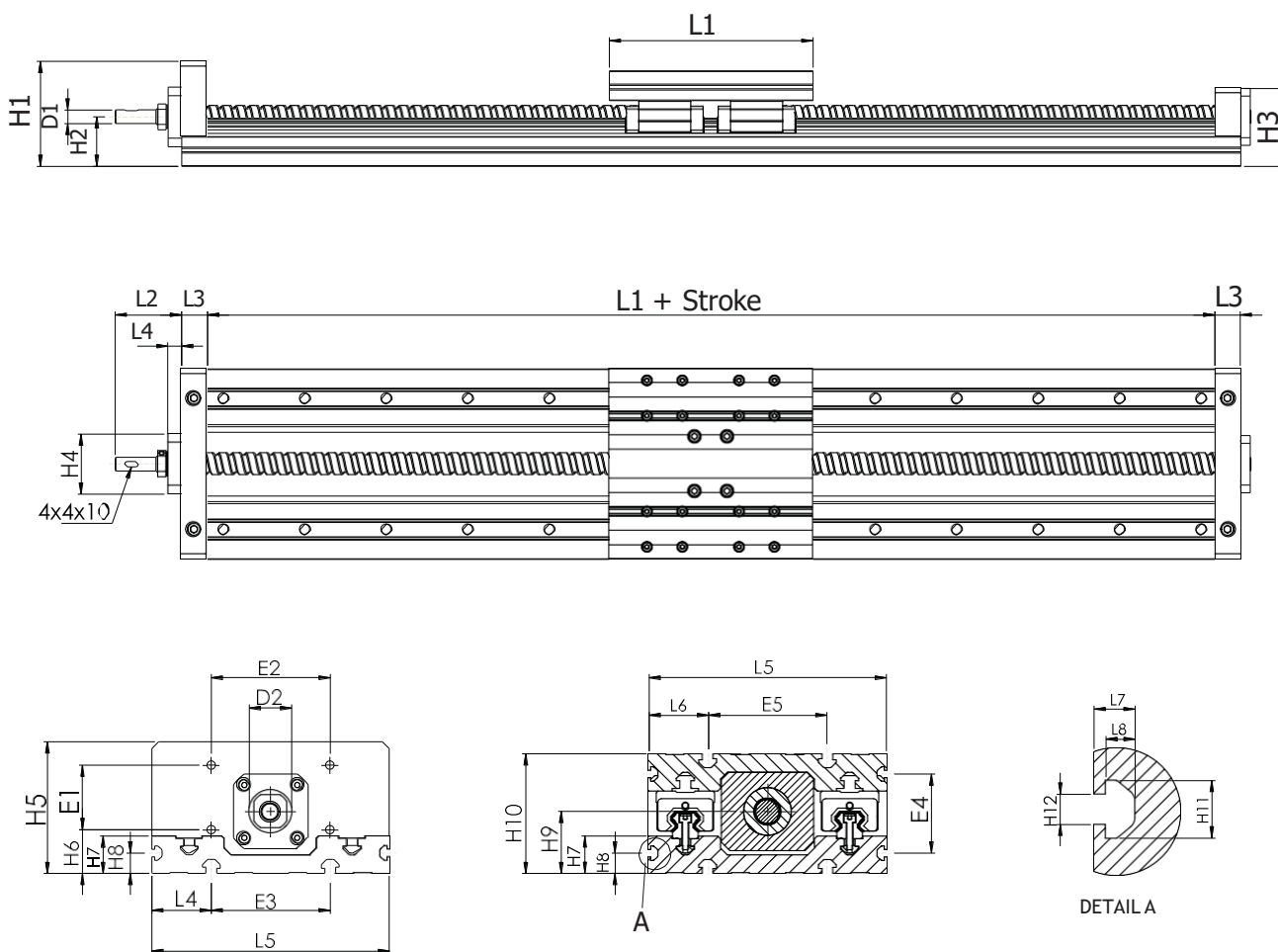
8 - Mounting Kit Side

00 	01 	02 
	03 	04 

WINMAN WMZD Series Table Linear Modules

Specification

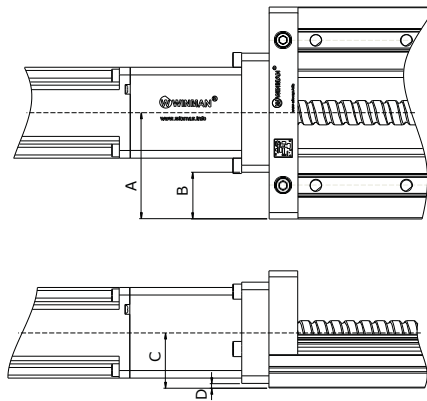
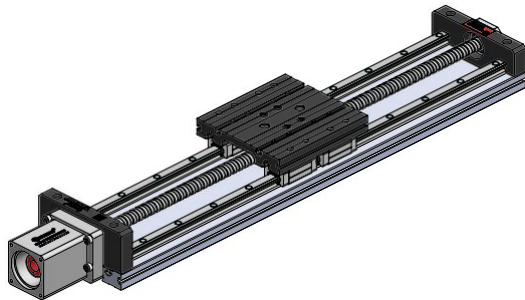
Module Type			WMZD-140	WMZD-170
Static Load	Co	kN	55,2	97,2
Dynamic Load	C	kN	34,0	56,4
Maximum Stroke		mm	1500	1500
Position Accuracy		µm/mm	53/300	53/300
Repeating Accuracy		mm	< 0,05	< 0,05
Acceleration		m/s ²	10	10

Note : Calculated value are theoretical values. We recommend you to calculate safety factor as five(5).

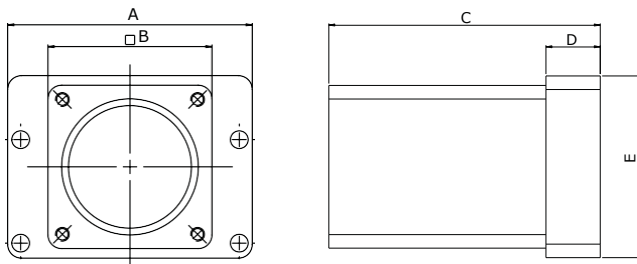
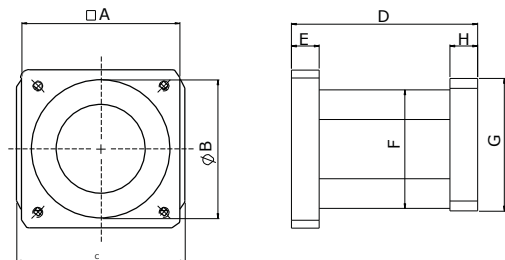
Technical Drawing


Modul Type	D1	D2	E1	E2	E3	E4	E5	H1	H2	H3	H4	H5	H6	H7
WMZD 140	10	25	38	70	70	46,5	70	77,5	36,5	57,5	44	77,5	25,5	22
WMZD 170	12	28	38	80	85	55	85	84,5	41,5	67,5	52	84,5	31,5	27

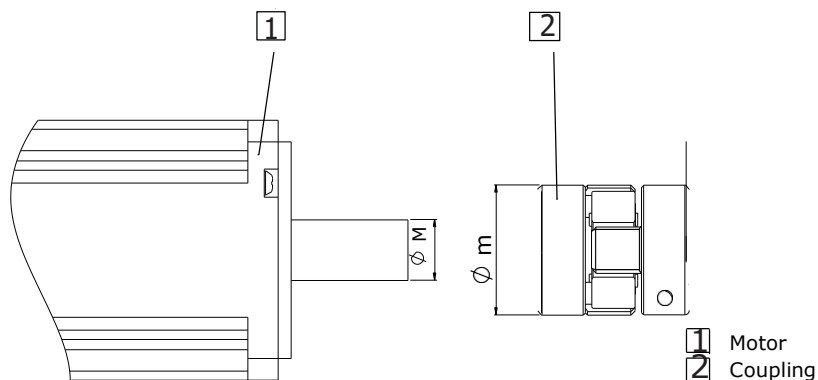
Modul Type	H8	H9	H10	H11	H12	L1	L2	L3	L4	L5	L6	L7	L8
WMZD 140	12	36,5	70,5	8,45	6,40	150	49	19	10	140	35	6	4,3
WMZD 170	13,5	41,5	82	12	6,40	200	58	19	15	170	42,5	8	5,6

WDAK Axial Mounting Kit
Technical Drawing


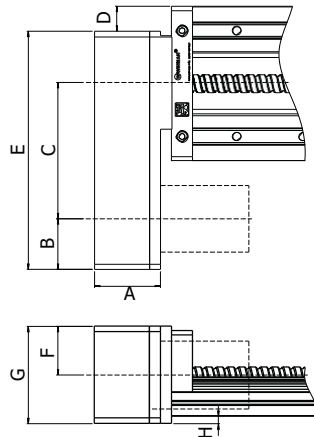
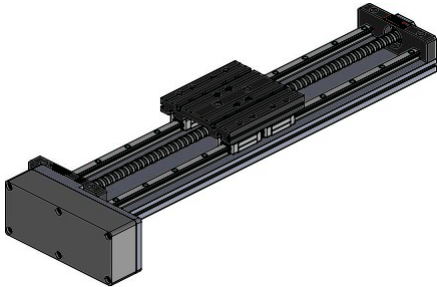
Module Type	Mounting Kit Assembly	A	B	C	D
WMZD 140	WDAK - 070	70	30,5	36,5	3
	WDAK - 090	70	30,5	36,5	3
WMZD 170	WDAK - 070	85	40,25	41,5	3
	WDAK - 090	85	40,25	41,5	3

Bellhousing
WDAK - 070

WDAK - 090


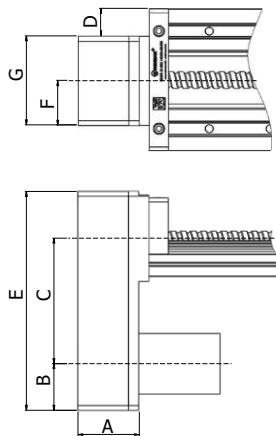
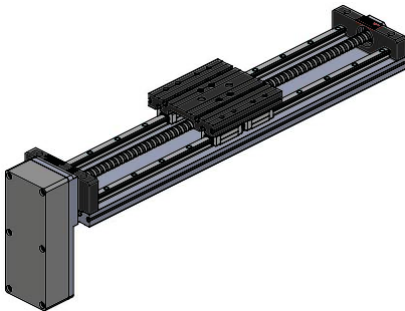
Module Type	A	B	C	D	E	Module Type	A	B	C	D	E	F	G	H
WMZD 140	79	60	92	18	67	WMZD 140	80	70	85	94	14	60	67	14
WMZD 170	89,5	60	100	20	67	WMZD 170	80	70	89,5	103	25	60	80	14

Coupling


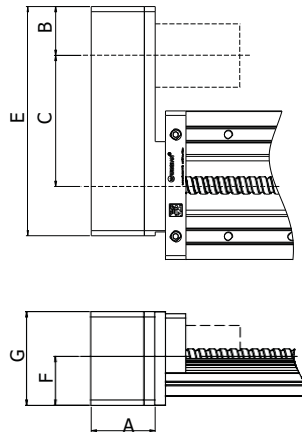
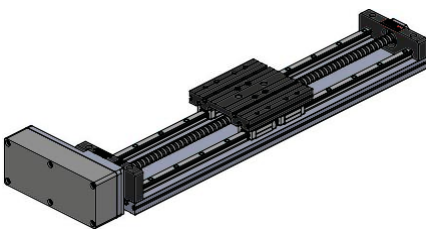
Motor Type	M	m	Coupling Model
WDAK-070	14	30	WWJCL - 30CRD
WDAK-090	19	40	WWJCL - 40CRD

WINMAN WDPK Parallel Mounting Kit
Technical Drawing
WDPK - _ _ - 01


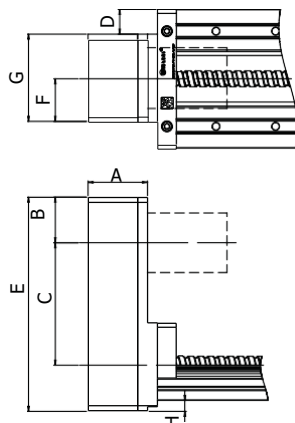
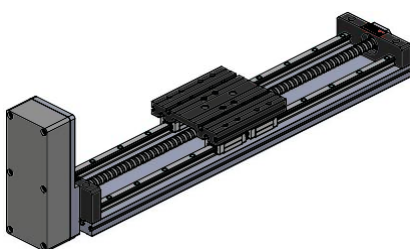
Module Type	WMZD - 140		WMZD - 170	
Kit Assembly	WDPK - 070 - 01	WDPK - 090 - 01	WDPK - 090 - 01	WDPK - 090 - 01
A	60	70	70	80
B	46	50	40	50
C	122,5	186	142	186
D	22,5	25	35	35
E	216	297	235	297
F	45	43	50	50
G	88	88	100	100
H	6,5	24,5	11,5	19,5

WDPK - _ _ - 02


Module Type	WMZD - 140		WMZD - 170	
Kit Assembly	WDPK - 070 - 01	WDPK - 090 - 01	WDPK - 090 - 01	WDPK - 090 - 01
A	60	70	70	80
B	46	50	40	50
C	122,5	186	142	186
D	25	25	32	24
E	216	297	235	297
F	43	43	50	50
G	88	88	100	100
H	-	24,5	-	-

WDPK - _ _ - 03


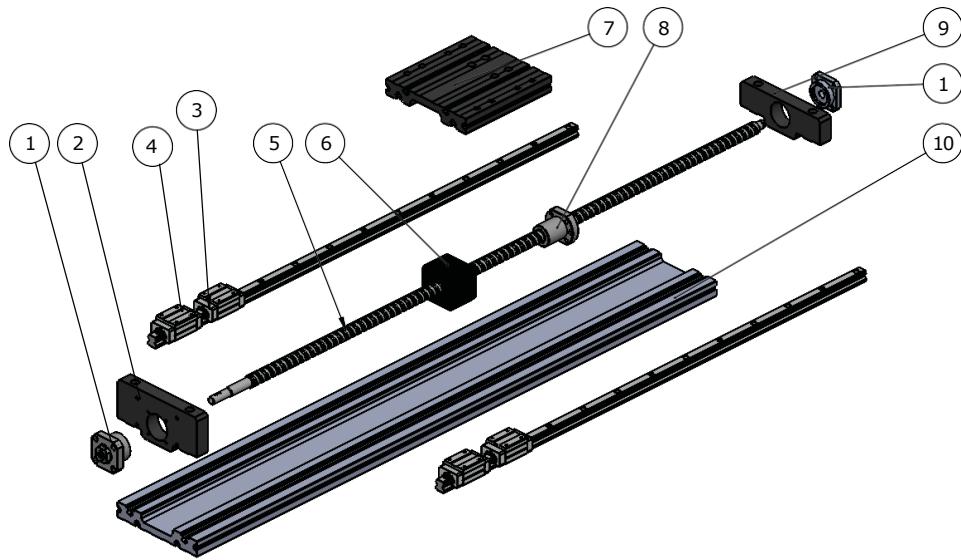
Module Type	WMZD - 140		WMZD - 170	
Kit Assembly	WDPK - 070 - 01	WDPK - 090 - 01	WDPK - 090 - 01	WDPK - 090 - 01
A	60	70	70	80
B	46	50	50	50
C	122,5	186	186	186
D	25	20	20	35
E	216	297	297	297
F	45	50	50	50
G	88	100	100	100
H	11	24,5	24,5	19,5

WDPK - _ _ - 04


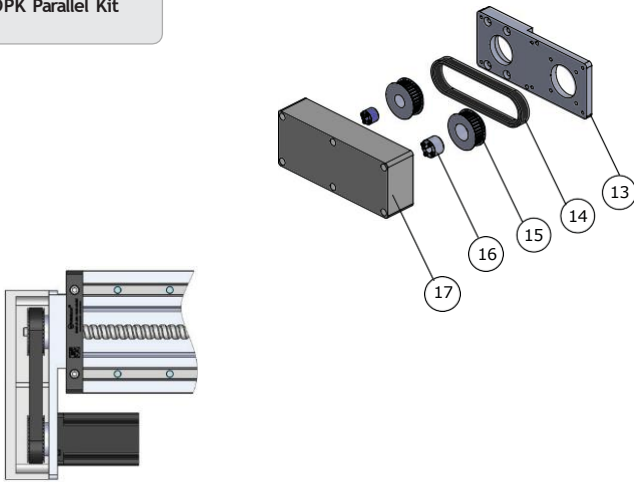
Module Type	WMZD - 140		WMZD - 170	
Kit Assembly	WDPK - 070 - 01	WDPK - 090 - 01	WDPK - 090 - 01	WDPK - 090 - 01
A	60	70	70	80
B	46	50	40	50
C	122,5	186	142	186
D	22,5	9	32	24
E	216	297	235	297
F	43	43	50	50
G	88	88	100	100
H	8,5	5	20	10

Assembly

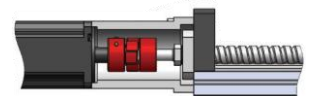
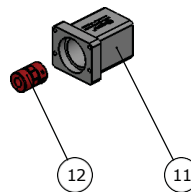
WMZD Linear Module



WDPK Parallel Kit



WDAK Axial Kit



Piece	Qty	Part Name	Assembly
1	2	Ball Screw Bearing	Module
2	1	Front Block	
3	2	Linear Guide	
4	4	Linear Carriage	
5	2	Ball Screw	
6	4	Ball Nut Bearing	
7	1	Mounting Plate	
8	1	Ball Nut	
9	1	Back Block	
10	1	Profile	
11	1	Bellhousing	Axial Kit
12	1	Coupling	Parallel Kit
13	1	Parallel Kit Cover	
14	1	Toothed Belt	
15	2	Timing Belt Pulleys	
16	2	Taper Bushing	
17	1	Parallel Kit Box	

Maintenance

Basic lubrication is done in-factory before shipment.

Bearings of the ball screw have been lubricated for life and will not require in-service lubrication under normal operating conditions.

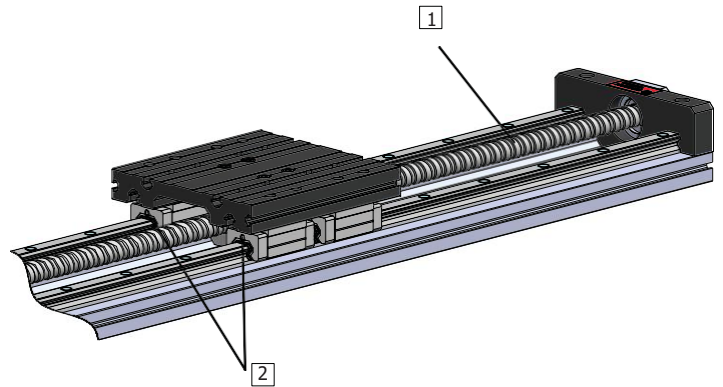
Ball screw (1) is lubricated without nipple, grease is applied directly ball screw.

Linear carriages is lubricated via nipple (2).

Table modules must be lubricated with suitable grease.

Lithium soap grease should be used.

Caution: Do not use grease containing graphite or MoS!



Lubrication is performed every 400 hours or 400 km total working distance by normal operating conditions.

Lubrication quantities is provided in table by normal operating conditions.

Normal Working Conditions

Ambient Temperature		°C	10 ~ 40
Speed		m/s	≤ 1,0
Screw Rotation Speed		rev/min	2500
Load		kN	≤ 0,2 C
Stroke		mm	> 60
Lubrication Period		Km	400
		Hour	400
Ball Screw Lubricate Dose	WMZD - 140	cm ³	2,2
	WMZD - 170	cm ³	4,2
Linear Carriage Lubricate Dose	WMZD - 140	cm ³ /port	0,4
	WMZD - 170	cm ³ /port	0,6