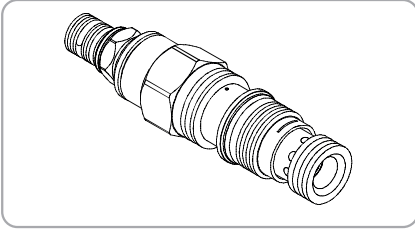
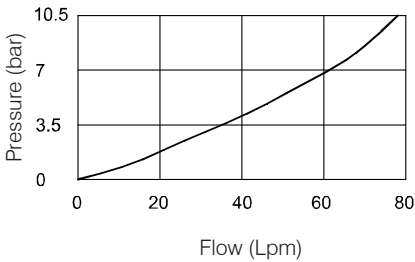


WHG SERIES CARTRIDGE DIRECT ACTING TYPE CHECK SEQUENCE VALVES

WHG - 02 Series



Performance



Specifications

Model Number	Max. Pressure (bar)	Max. Flow (lpm)	Weight (Kg)
WHG-02	350 (5076psi)	60 (15.85 gpm)	0.2 (0.44 lbs)
Fluid Type		ISO VG 32, 46, 68	
Viscosity		10~400 (59~1854 SSU)	
Operating Temperature		-15~70 (-5~158°F)	
Contamination Level		ISO4406.21/19/16 NAS1638,10	

How To Order

1	2	3	4
WHG	02	- *	- *

1 Valve Series

WHG=Cartridge Type
Sequence Valves

2 Subplate Mounting Size

02 :T-11A Cavity :CST-11A

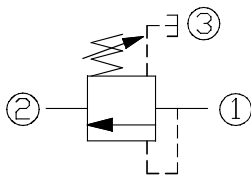
3 Adjustment Pressure

Order	Adjustment pressure
06	2 ~ 60 (bar)
10	3.5 ~ 105 (bar)
21	7 ~ 210 (bar)
42	10 ~ 420 (bar)

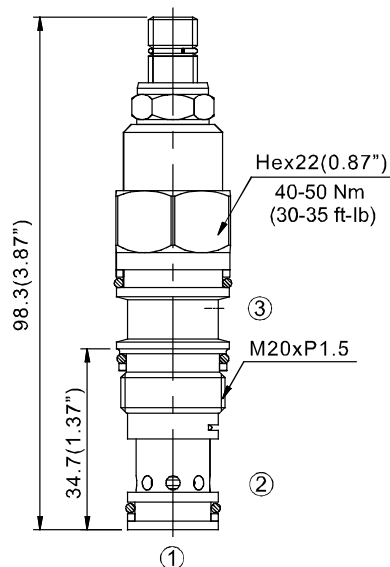
4 Adjustment Option

NONE	NONE:TOOL ADJUST	
K	K:HAND-BAR ADJUST	

Control Port (S)

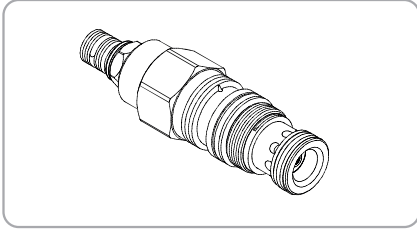


Dimensions

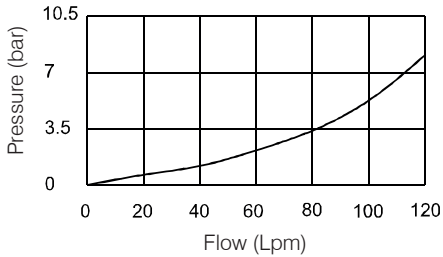


WHG SERIES CARTRIDGE DIRECT ACTING TYPE CHECK SEQUENCE VALVES

WHG - 03 Series



Performance



Specifications

Model Number	Max. Pressure (bar)	Max. Flow (lpm)	Weight (Kg)
WHG-03	350 (5076 psi)	120(31.70 gpm)	0.33 (0.73 lbs)
Fluid Type		ISO VG 32, 46, 68	
Viscosity cSt		10~400 (59~1854 SSU)	
Operating Temperature		-15~70 (-5~158°F)	
Contamination Level		ISO4406.21/19/16 NAS1638,10	

How To Order

1	2	3	4
WHG	03	- *	- *

1 Valve Series

WHG=Cartridge Type
Sequence Valves

2 Subplate Mounting Size

03 :T-2A Cavity :CST-2A

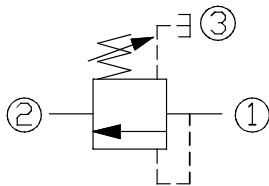
3 Adjustment Pressure

Order	Adjustment pressure
06	2 ~ 60 (bar)
10	3.5 ~ 105 (bar)
21	7 ~ 210 (bar)
42	10 ~ 420 (bar)

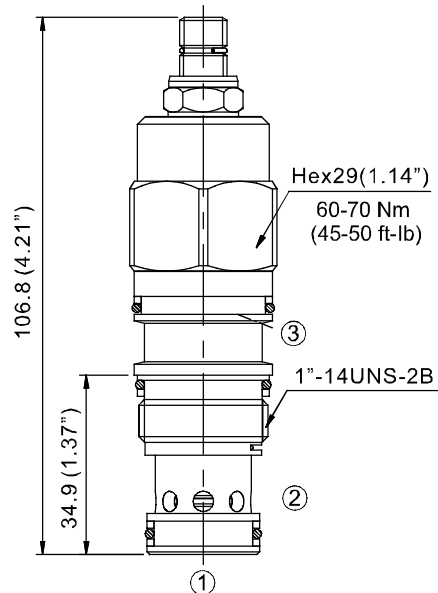
4 Adjustment Option

NONE	NONE:TOOL ADJUST	
K	K:HAND-BAR ADJUST	

Control Port (S)

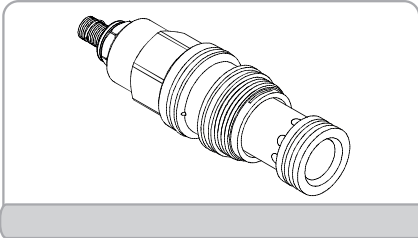


Dimensions

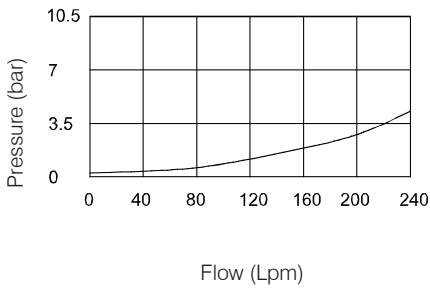


WHG SERIES CARTRIDGE DIRECT ACTING TYPE CHECK SEQUENCE VALVES

WHG -06 Series



Performance



Specifications

Model Number	Max. Pressure (bar)	Max. Flow (lpm)	Weight (Kg)
WHG-06	350 (5076 psi)	240 (63.40 gpm)	0.7 (1.54 lbs)
Fluid Type		ISO VG 32, 46, 68	
Viscosity cSt		10~400 (59~1854 SSU)	
Operating Temperature		-15~70 (-5~158°F)	
Contamination Level		ISO4406.21/19/16 NAS1638,10	

How To Order

1	2	3	4
WHG	06	- *	- *

1 Valve Series

WHG=Cartridge Type
Sequence Valves

2 Subplate Mounting Size

06 :T-17A Cavity :CST-17A

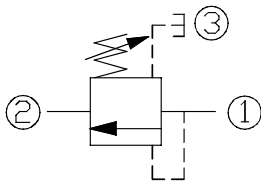
3 Adjustment Pressure

Order	Adjustment pressure
06	2 ~ 60 (bar)
10	3.5 ~ 105 (bar)
21	7 ~ 210 (bar)
42	10 ~ 420 (bar)

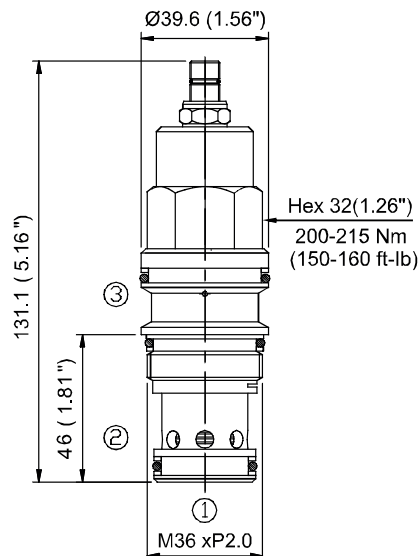
4 Adjustment Option

NONE	NONE:TOOL ADJUST	
K	K:HAND-BAR ADJUST	

Control Port (S)

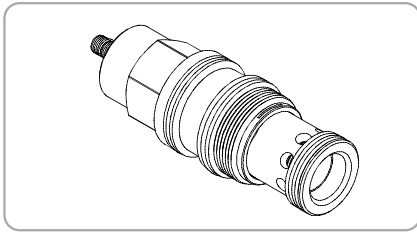


Dimensions

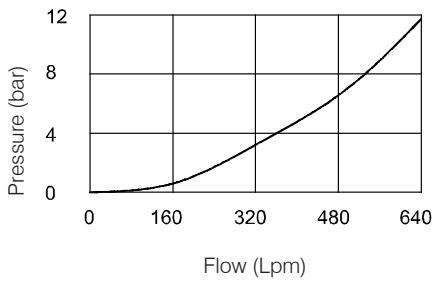


WHG SERIES CARTRIDGE DIRECT ACTING TYPE CHECK SEQUENCE VALVES

WHG- 10 Series



Performance



Specifications

Model Number	Max. Pressure (bar)	Max. Flow (lpm)	Weight (Kg)
WHG-10	350 (5076 psi)	480 (126.80 gpm)	1.45 (3.20 lbs)
Fluid Type		ISO VG 32, 46, 68	
Viscosity		10~400 (59~1854 SSU)	
Operating Temperature		-15~70 (-5~158°F)	
Contamination Level		ISO4406.21/19/16 NAS1638,10	

How To Order

1	2	3	4
WHG	10	- *	- *

1 Valve Series

WHG=Cartridge Type Sequence Valve

2 Subplate Mounting Size

10 :T-19A Cavity :CST-19A

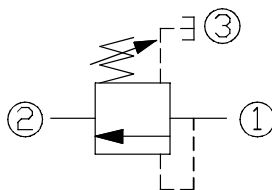
3 Adjustment Pressure

Order	Adjustment pressure
06	2 ~ 60 (bar)
10	3.5 ~ 105 (bar)
21	7 ~ 210 (bar)
42	10 ~ 420 (bar)

4 Adjustment Option

NONE	NONE:TOOL ADJUST	
K	K:HAND-BAR ADJUST	

Control Port (S)



Dimensions

