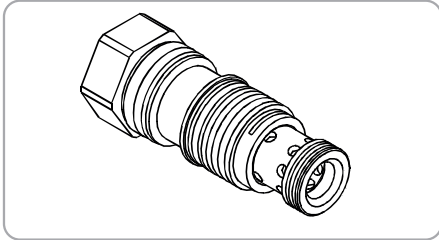


WCXA SERIES CARTRIDGE CHECK, PILOT-TO-CLOSE VALVES

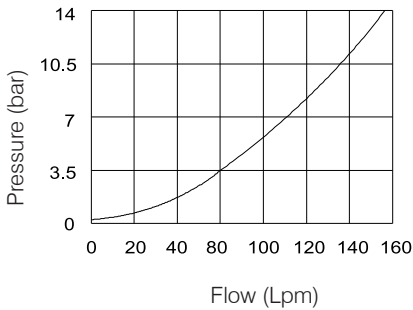
WCXA-03 Series



Specifications

Model Number	Max. Pressure (bar)	Max. Flow (lpm)	Weight (Kg)
WCXA-03	350 (5076psi)	140 (36.98 gpm)	0.23 (0.51lbs)
Fluid Type		ISO VG 32, 46, 68	
Viscosity cSt		10~400 (59~1854 SSU)	
Operating Temperature		-15~70 (-5~158°F)	
Contamination Level		ISO4406.21/19/16 NAS1638,10	

Performance



How To Order

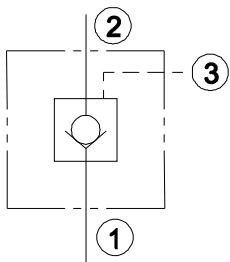
1
2
3
WCXA 03 - *

1 Valve Series
 WCXA= CARTRIDGE CHECK ,
 PILOT-TO-CLOSE VALVES

2 Subplate Mounting Size
 03 : T-2A
 Cavity : CST-2A

3 Bias Spring
 05 : 0.3 bar (4 psi)
 20 : 2 bar (29 psi)
 50 : 5bar (73 psi)

Control Port (S)



Dimensions

