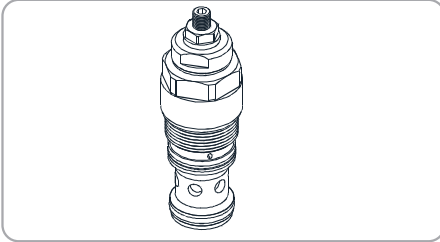


WCQ SERIES CARTRIDGE TYPE COUNTER BALANCE VALVES

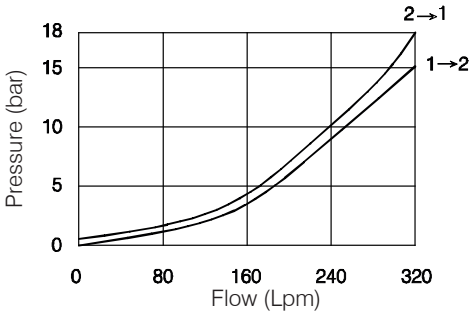
WCQ Series



Specifications

Model Number	Max. Pressure (bar)	Pilot Ratio	Adjustment Pressure (bar)	Max. Flow (lpm)	Weight (Kg)
WCQ-20U	420 (6092 psi)	4:1 / 8:1	* ~420	320 (84.54 gpm)	0.91 (2.01 lbs)
Fluid Type		ISO VG 32, 46, 68			
Viscosity cSt		10~400 (59~1854 SSU)			
Operating Temperature		-15~70 (-5~158°F)			
Contamination Level		ISO4406.21/19/16 NAS1638,10			

Performance



How To Order

1	2	3	4	5
WCQ	20U	- 35	- *	- 4A

1 Valve Series
WCQ=Cartridge Type Counter Balance Valves

2 Subplate Mounting Size
Size : 20U
Cavity:A6935

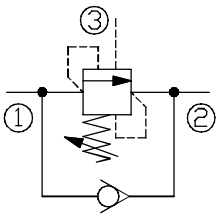
3 Adjustment Pressure

Pilot ratio	Order	Adjustment pressure
4:1	20	70 ~ 210 (bar)
	35	140 ~ 350 (bar)
8:1	40	140 ~ 420 (bar)

4 Adjustment Option
NONE:TOOL ADJUST

5 Pilot Ratio
4A : 4:1
8A : 8:1

Control Port (S)



Dimensions

A6935

