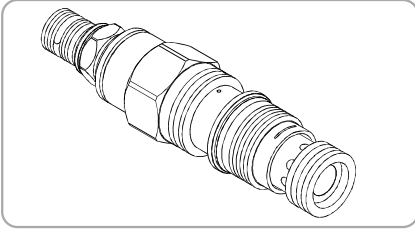
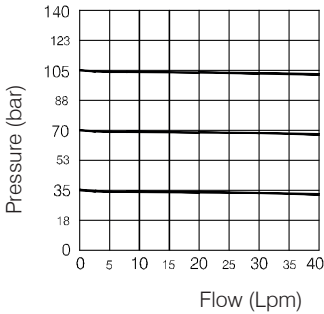


WBR SERIES CARTRIDGE REDUCING VALVES PILOT OPERATED TYPE

WBR - 02 Series



Performance



Specifications

Model Number	Max. Pressure (bar)	Max. Flow (lpm)	Weight (Kg)
WBR-02	350 (5076psi)	40 (10.57 gpm)	0.2 (0.44 lbs)
Fluid Type		ISO VG 32, 46, 68	
Viscosity		10~400 (59~1854 SSU)	
Operating Temperature		-15~70 (-5~158°F)	
Contamination Level		ISO4406.21/19/16 NAS1638,10	

How To Order

1	2	3	4
WBR	02	- *	- *

1 Valve Series
WBR=Cartridge Reducing Valves
(PILOT OPERATED TYPE)

2 Subplate Mounting Size
02 :T-11A Cavity :CST-11A

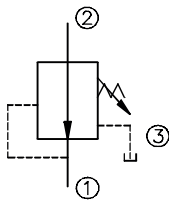
3 Adjustment Pressure

Order	Adjustment pressure
02	4 ~ 20 (bar)
04	4 ~ 60 (bar)
09	4 ~ 100 (bar)
20	7 ~ 210 (bar)

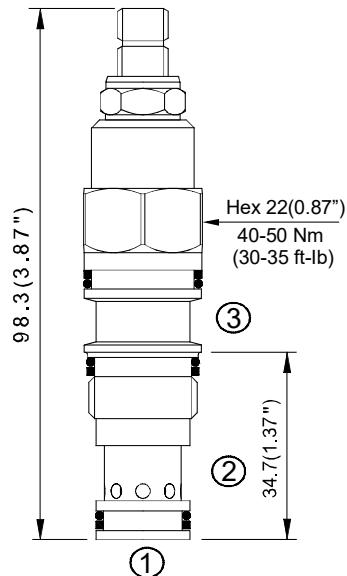
4 Adjustment Option

NONE	NONE:TOOL ADJUST	
K	K:HAND-BAR ADJUST	

Control Port (S)

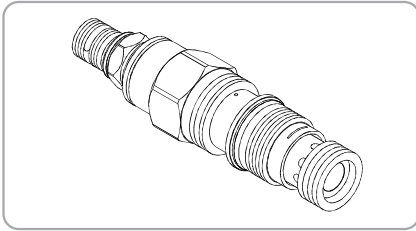


Dimensions

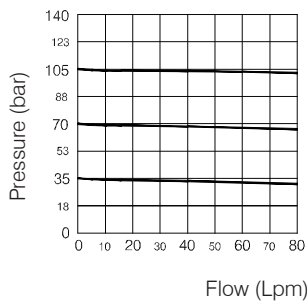


WBR SERIES CARTRIDGE REDUCING VALVES PILOT OPERATED TYPE

WBR - 03 Series



Performance



Specifications

Model Number	Max. Pressure (bar)	Max. Flow (lpm)	Weight (Kg)
WBR-03	350 (5076 psi)	80(21.13 gpm)	0.33 (0.73 lbs)
Fluid Type		ISO VG 32, 46, 68	
Viscosity cSt		10~400 (59~1854 SSU)	
Operating Temperature		-15~70 (-5~158°F)	
Contamination Level		ISO4406.21/19/16 NAS1638,10	

How To Order

1	2	3	4
WBR	03	- * - *	

1 Valve Series
WBR=Cartridge Reducing Valves
(PILOT OPERATED TYPE)

2 Subplate Mounting Size
03 :T-2A Cavity :CST-2A

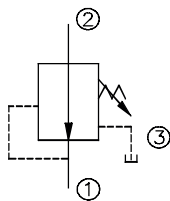
3 Adjustment Pressure

Order	Adjustment pressure
06	2 ~ 60 (bar)
10	3.5 ~ 105 (bar)
21	7 ~ 210 (bar)
42	10 ~ 420 (bar)

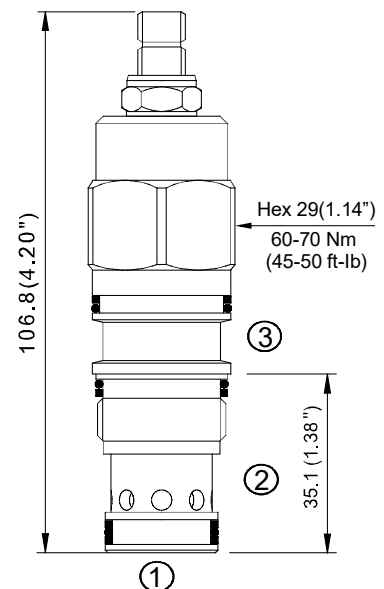
4 Adjustment Option

NONE	NONE:TOOL ADJUST	
K	K:HAND-BAR ADJUST	

Control Port (S)

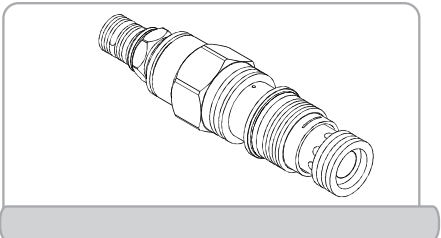


Dimensions

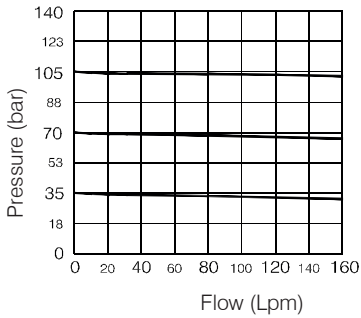


WBR SERIES CARTRIDGE REDUCING VALVES PILOT OPERATED TYPE

WBR - 06 Series



Performance



Specifications

Model Number	Max. Pressure (bar)	Max. Flow (lpm)	Weight (Kg)
WBR-06	350 (5076 psi)	160 (42.27 gpm)	0.61 (1.35 lbs)
Fluid Type		ISO VG 32, 46, 68	
Viscosity cSt		10~400 (59~1854 SSU)	
Operating Temperature		-15~70 (-5~158°F)	
Contamination Level		ISO4406.21/19/16 NAS1638,10	

How To Order

1	2	3	4
WBR	06	- *	- *

1 Valve Series
WBR=Cartridge Reducing Valves (PILOT OPERATED TYPE)

2 Subplate Mounting Size
06 :T-17A Cavity :CST-17A

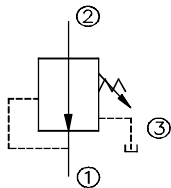
3 Adjustment Pressure

Order	Adjustment pressure
02	4 ~ 20 (bar)
04	4 ~ 60 (bar)
09	4 ~ 100 (bar)
20	7 ~ 210 (bar)
31	10 ~ 315 (bar)

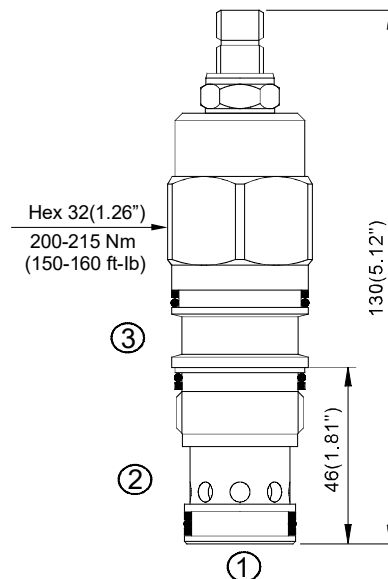
4 Adjustment Option

NONE	NONE:TOOL ADJUST	
K	K:HAND-BAR ADJUST	

Control Port (S)

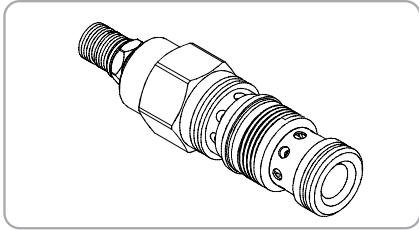


Dimensions

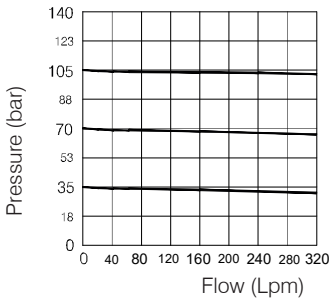


WBR SERIES CARTRIDGE REDUCING VALVES PILOT OPERATED TYPE

WBR -10 Series



Performance



Specifications

Model Number	Max. Pressure (bar)	Max. Flow (lpm)	Weight (Kg)
WBR-10	350 (5076 psi)	320 (84.53 gpm)	1.3 (2.87 lbs)
Fluid Type		ISO VG 32, 46, 68	
Viscosity		10~400 (59~1854 SSU)	
Operating Temperature		-15~70 (-5~158°F)	
Contamination Level		ISO4406.21/19/16 NAS1638,10	

How To Order

1	2	3	4
WBR	10	- *	- *

1 Valve Series
WBR=Cartridge Reducing Valves (PILOT OPERATED TYPE)

2 Subplate Mounting Size
10 :T-19A Cavity :CST-19A

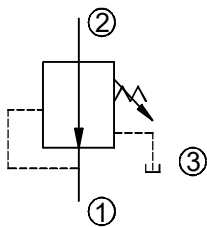
3 Adjustment Pressure

Order	Adjustment pressure
04	4 ~ 60 (bar)
09	4 ~ 100 (bar)
20	7 ~ 210 (bar)
31	10 ~ 315 (bar)

4 Adjustment Option

NONE	NONE:TOOL ADJUST	
K	K:HAND-BAR ADJUST	

Control Port (S)



Dimensions

