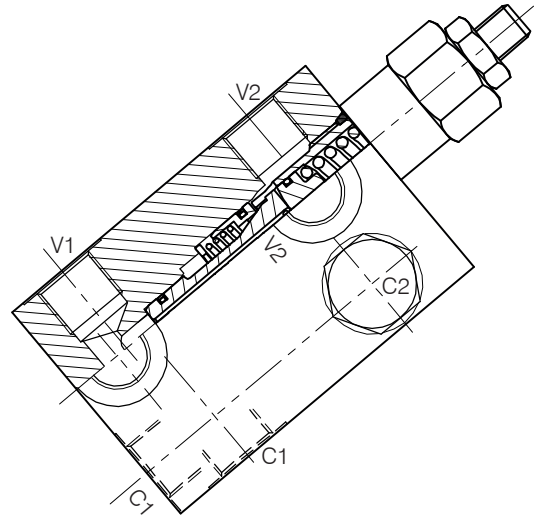
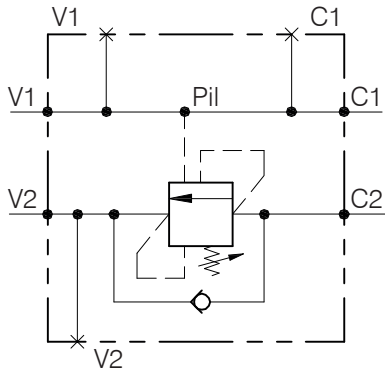


WB-SE-...FBC-...

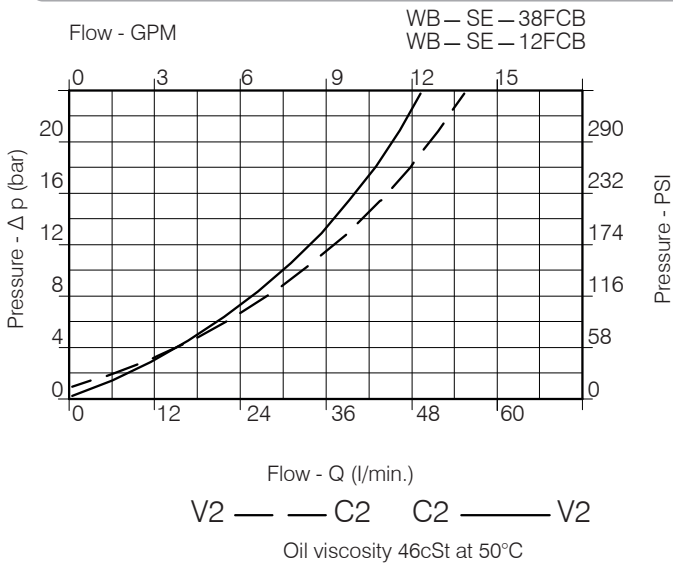
SINGLE COUNTERBALANCE VALVE WITH FLANGEABLE BODY



Performance

Rated size	DN 8/10
Min/Max flow-rate	1/60 l/min - 0.26/15.9 GPM
Max peak pressure	450 bar - 6525 PSI
Max setting pressure	350 bar - 5075 PSI
Standard pilot ratio	4.25 : 1
Room temperature	-30°C + 50°C
Oil temperature	-30°C + 80°C
Recommended filtration	30 micron
Weight	

Performance Details



NOTE:

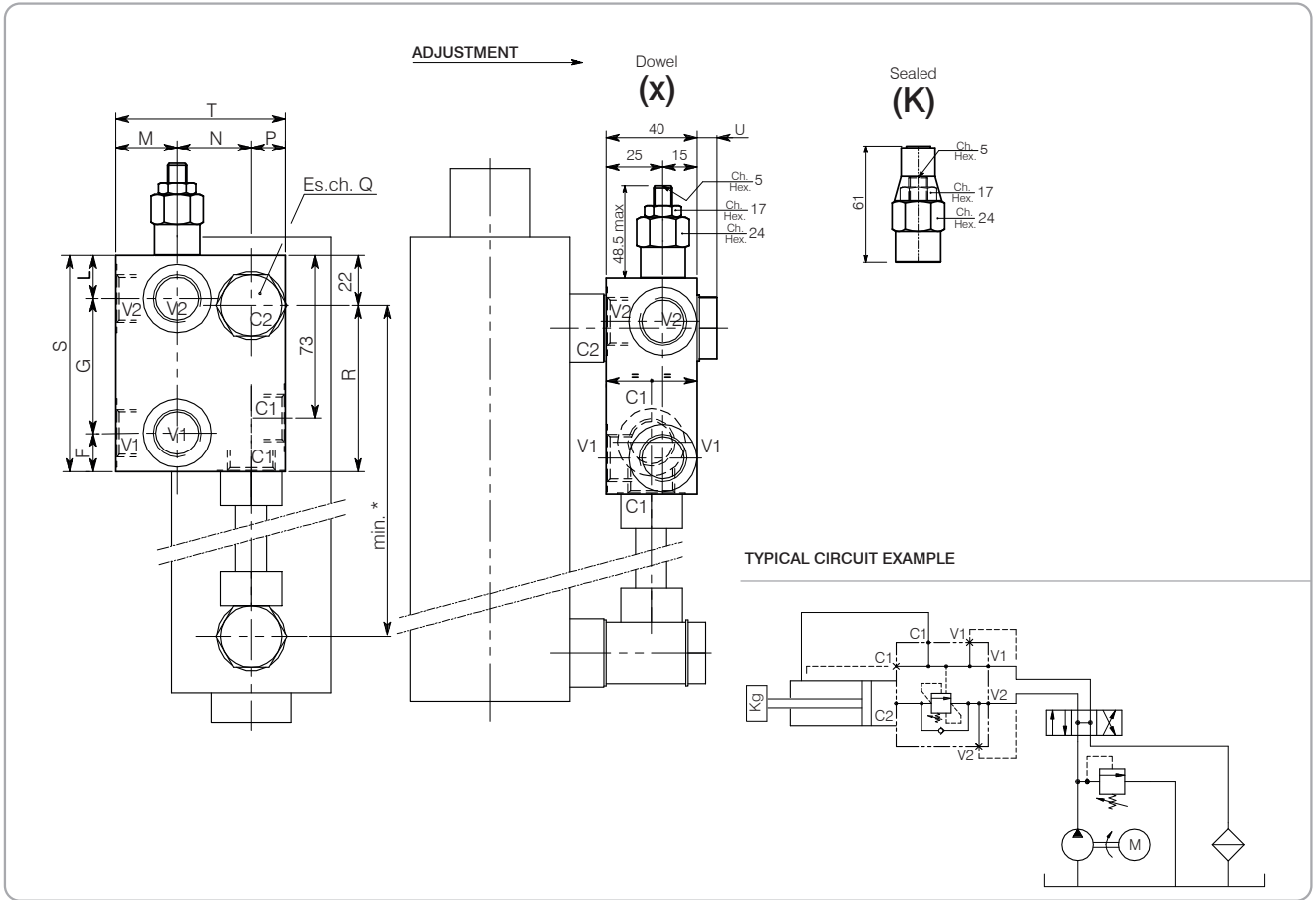
Valve should be set at 1.3 times load induced pressure.

EXAMPLE:

Max working pressure: 350 bar / 1.3 = 270 bar

WB-SE-...FBC-...

Hydraulic valves and integrated components



Dimensions

Setting Range	F	G	L	M	N	P	Q	R	S	T	U	V	Port size	Rated size	Max flow-rate
													V2-C2 GAS (BSP)	DN	l/min - GPM
284	16	53	21	25	27	13	22	68	90	65	9	11	3/8"	8	40-10
285	16	60	19	27	32	16	27	73	95	75	10	16	1/2"	10	60-15

Ordering Code

N 0 1 . 2 8 4 . 0 . X 0 . A

Setting Range	
284	
285	
Setting range 60 ÷ 350 bar (yellow spring)	
Std. bar setting Q=5 l/1')	Pressure rise - turn of screw (90)
250 bar	

Body
Zinc plated
Steel

Adjustment
X= Dowel
K= Sealed

Pilot Ratios
0 = 4.25 : 1
G = 8 : 1

284 Available aluminium body without "A"