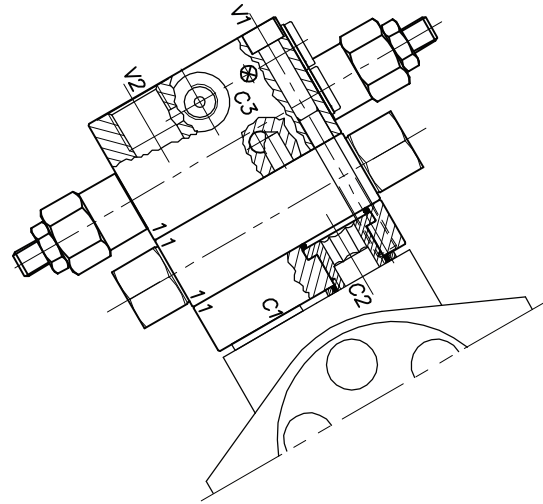
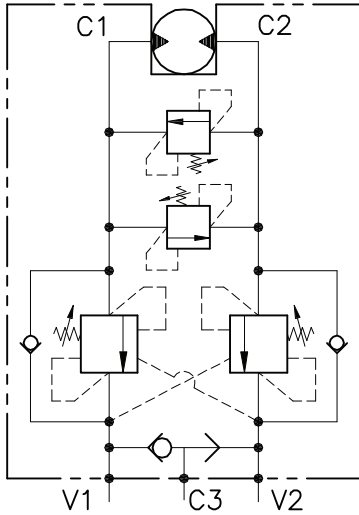


WINMAN WB-M-DE-VFF-...12-14-...

Double Acting Engine Flange With Maximum Valves / Balancing, Locking And Motion Control Valve



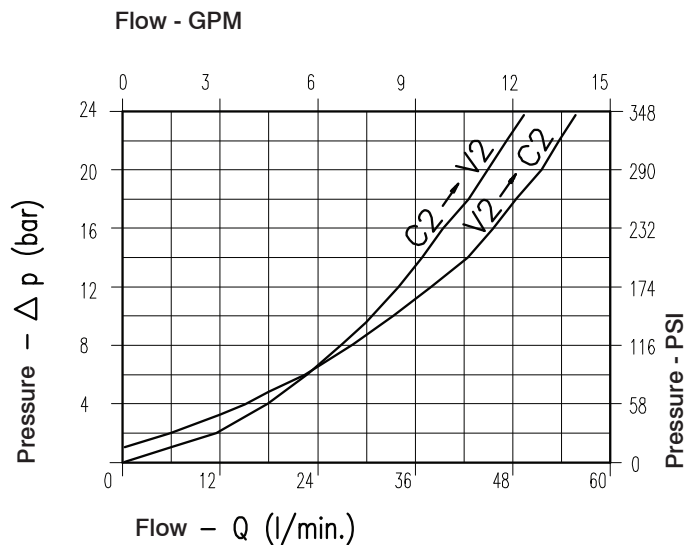
Performance

Rated size	: DN 10
Min/max flow-rate	: 1/60 l/min - 0.26/15.9 GPM
Max peak pressure	: 350 bar - 5075 PSI
Max setting pressure	: 220 bar - 3190 PSI
Standard pilot ratio	: 4.25 : 1
Room temperature	: -30°C + 50°C
Oil temperature	: -30°C + 80°C
Recommended filtration	: 30 micron
Tightening torque	: 110÷115 Nm
Weight	

Note : Valve should be set at 1.3 times load induced pressure.

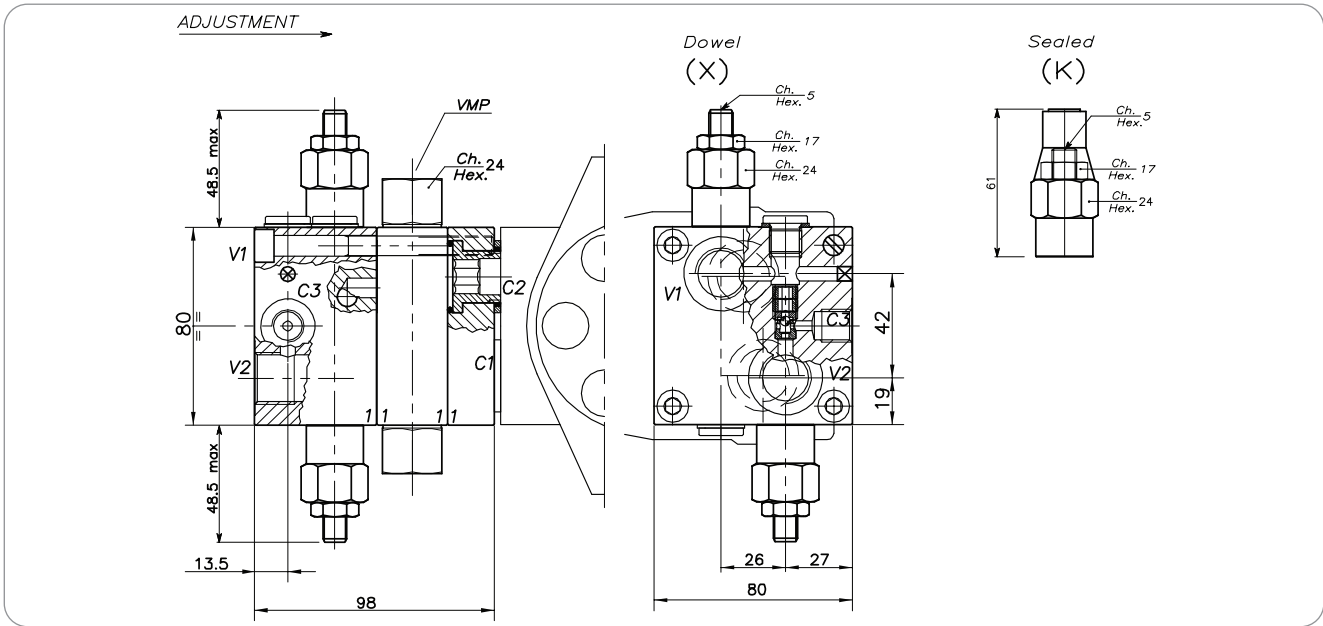
Example :

Max working pressure:
350 bar / 1.3 = 270 bar



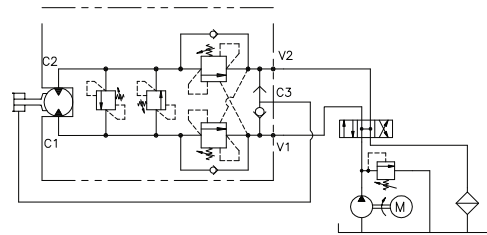
Oil viscosity 46 cSt at 50°C

WINMAN WB-M-DE-VFF-...12-14-... Double Counterbalance / Motor Flangeable Valve With Relief Valves



Dimensions Typical Circuit Example

Setting range	Port size V2-C2 V1-C1 GAS (BSPP)	Port size C3 GAS (BSPP)	Motor type
440	1/2"	1/4"	Samhydraulik AG-BG-AR (40x8) FSH
441	1/2"	1/4"	Olidrive (44x17) FOLD
442	1/2"	1/4"	Samhydraulik HPR-HPRC Danfoss OMS (32x22) FOMS
443	1/2"	1/4"	Danfoss OMR-OMP (36x36) FOMR-OMP



How To Order

<p>N01</p> <p>440</p> <p style="background-color: red; color: white; padding: 2px;">Campo taratura / Setting range</p> <table border="0" style="width: 100%;"> <tr> <td style="width: 50%;">WB)</td> <td style="width: 50%;">440</td> <td style="width: 50%;">(VMP)</td> </tr> <tr> <td>WB)</td> <td>441</td> <td>(VMP)</td> </tr> <tr> <td>WB)</td> <td>442</td> <td>(VMP)</td> </tr> <tr> <td>WB)</td> <td>443</td> <td>(VMP)</td> </tr> </table> <table border="1" style="width: 100%; border-collapse: collapse; margin-top: 5px;"> <tr> <td style="width: 50%; padding: 2px;">Setting range 30÷220 bar (green spring)</td> <td style="width: 50%; padding: 2px;">Setting range 60÷350 bar (yellow spring)</td> </tr> </table> <table border="1" style="width: 100%; border-collapse: collapse; margin-top: 5px;"> <tr> <td style="width: 25%; padding: 2px;">Std. bar setting (Q=5 l/1') 180 bar</td> <td style="width: 25%; padding: 2px;">Pressure rise turn of screw (50)</td> <td style="width: 25%; padding: 2px;">Std. bar setting (Q=5 l/1') 250 bar</td> <td style="width: 25%; padding: 2px;">Pressure rise turn of screw (90)</td> </tr> </table>	WB)	440	(VMP)	WB)	441	(VMP)	WB)	442	(VMP)	WB)	443	(VMP)	Setting range 30÷220 bar (green spring)	Setting range 60÷350 bar (yellow spring)	Std. bar setting (Q=5 l/1') 180 bar	Pressure rise turn of screw (50)	Std. bar setting (Q=5 l/1') 250 bar	Pressure rise turn of screw (90)	<p>0 X 0 A</p> <table border="0" style="width: 100%; margin-top: 10px;"> <tr> <td style="width: 25%; background-color: red; color: white; padding: 5px;">Pilot ratios</td> <td style="width: 25%; background-color: red; color: white; padding: 5px;">Adjustment</td> <td style="width: 25%; background-color: red; color: white; padding: 5px;">Body</td> </tr> <tr> <td style="padding: 2px;">O 4.25 : 1 D 8 : 1</td> <td style="padding: 2px;">X Dowel K Sealed</td> <td style="padding: 2px;">A Zinc plated steel</td> </tr> </table> <table border="1" style="width: 100%; border-collapse: collapse; margin-top: 10px; background-color: red; color: white;"> <tr> <td style="width: 20%; padding: 2px;">442</td> <td rowspan="4" style="padding: 2px;">Available aluminium body without "A"</td> </tr> <tr> <td style="padding: 2px;">443</td> </tr> <tr> <td style="padding: 2px;">440</td> </tr> <tr> <td style="padding: 2px;">441</td> </tr> </table>	Pilot ratios	Adjustment	Body	O 4.25 : 1 D 8 : 1	X Dowel K Sealed	A Zinc plated steel	442	Available aluminium body without "A"	443	440	441
WB)	440	(VMP)																												
WB)	441	(VMP)																												
WB)	442	(VMP)																												
WB)	443	(VMP)																												
Setting range 30÷220 bar (green spring)	Setting range 60÷350 bar (yellow spring)																													
Std. bar setting (Q=5 l/1') 180 bar	Pressure rise turn of screw (50)	Std. bar setting (Q=5 l/1') 250 bar	Pressure rise turn of screw (90)																											
Pilot ratios	Adjustment	Body																												
O 4.25 : 1 D 8 : 1	X Dowel K Sealed	A Zinc plated steel																												
442	Available aluminium body without "A"																													
443																														
440																														
441																														