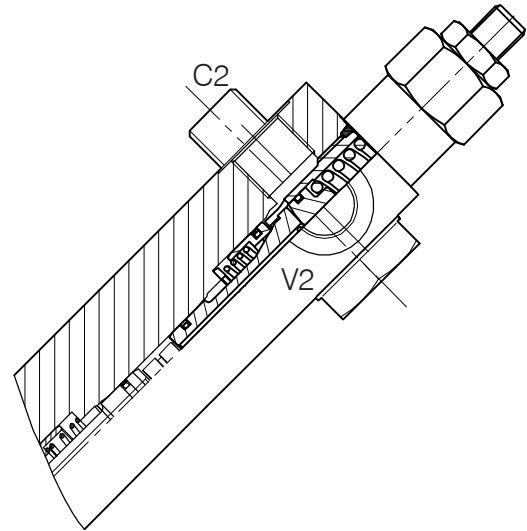
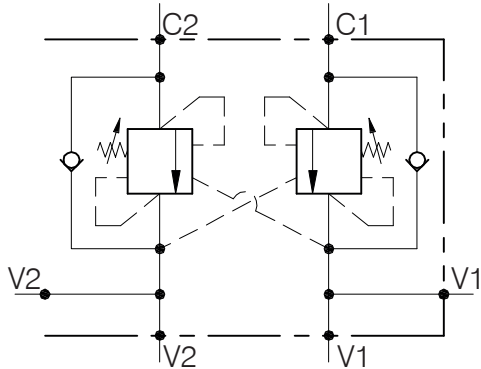


**WB-DE-...FCB-...**

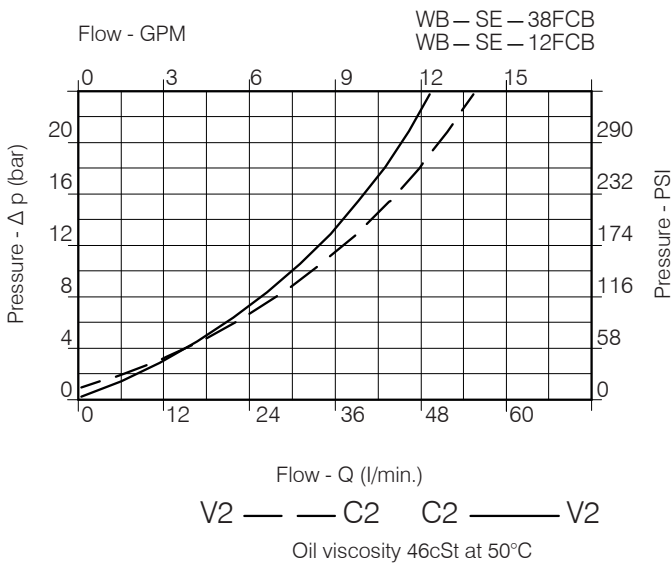
**DOUBLE COUNTERBALANCE VALVE WITH FLANGEABLE BODY**



**Performance**

Rated size	DN 8/10
Min/Max flow-rate	1/60 l/min - 0.26/15.9 GPM
Max peak pressure	450 bar - 6525 PSI
Max setting pressure	350 bar - 5075 PSI
Standard pilot ratio	4.25 : 1
Room temperature	-30°C + 50°C
Oil temperature	-30°C + 80°C
Recommended filtration	30 micron
Weight	

**Performance Details**



**NOTE:**

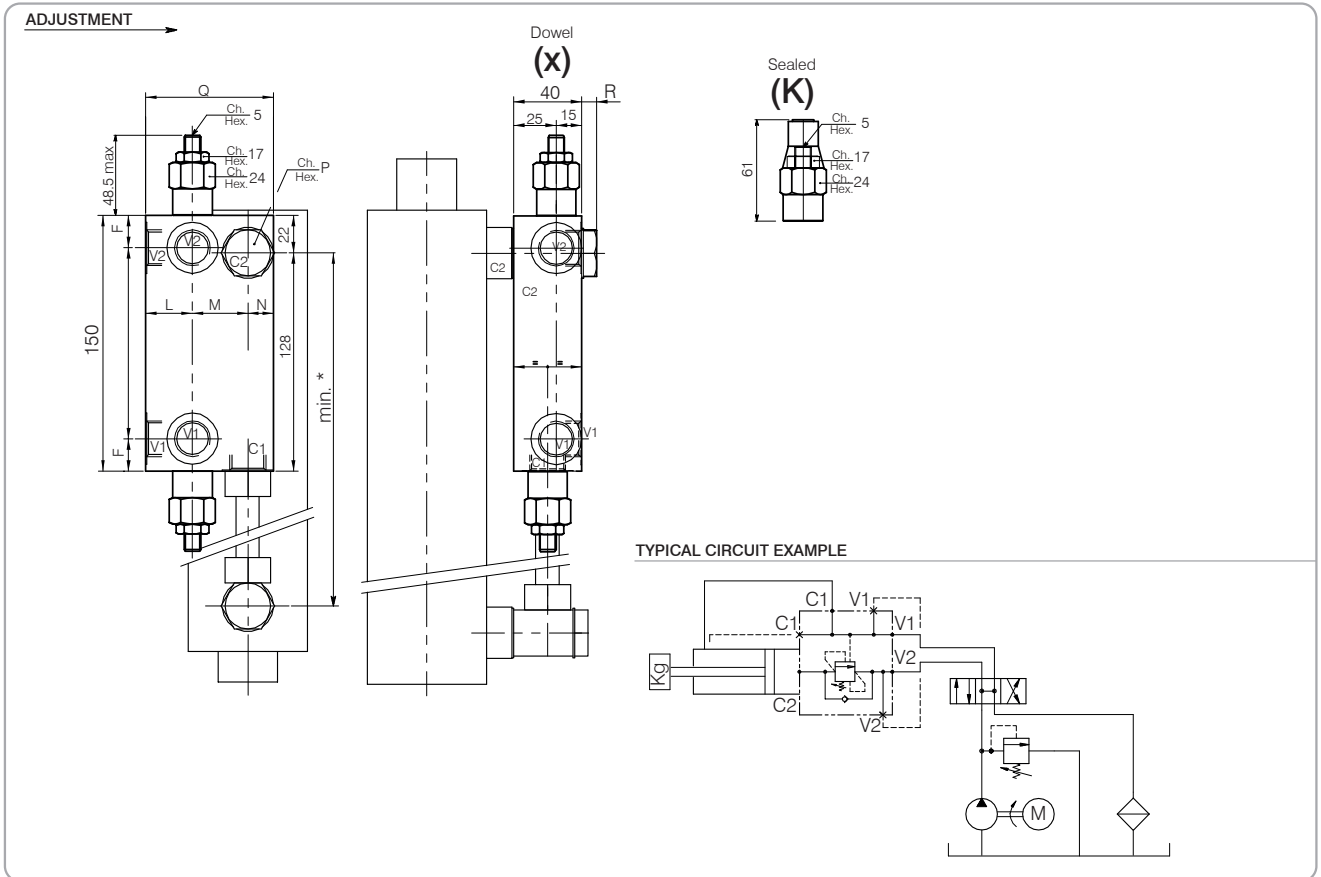
Valve should be set at 1.3 times load induced pressure.

**EXAMPLE:**

Max working pressure: 350 bar / 1.3 = 270 bar

**WB-DE-...FCB-...**

**Hydraulic valves and integrated components**



**Dimensions**

Setting Range	F	G	L	M	N	P	Q	R	Port size		Tightening torque for Bolt	Max flow-rate
									V1-C1	V2-C2	NM	l/min - GPM
288	21	108	25	27	13	22	65	9	3/8"		63÷71	40-10
289	19	112	27	32	16	27	72	10	1/2"		75÷85	60-15

**Ordering Code**

**N 0 1 . 2 8 8 . 0 . X 0 . A**

Setting Range	
288	
289	
Setting range 60 ÷ 350 bar (yellow spring)	
Std. bar setting Q=5 l/1') 250 bar	Pressure rise - turn of screw (90)

**Body**  
Zinc plated Steel

**Adjustment**  
X = Dowel  
K = Sealed

**Pilot Ratios**  
0 = 4.25 : 1  
D = 8 : 1

288 Available aluminium body without "A"