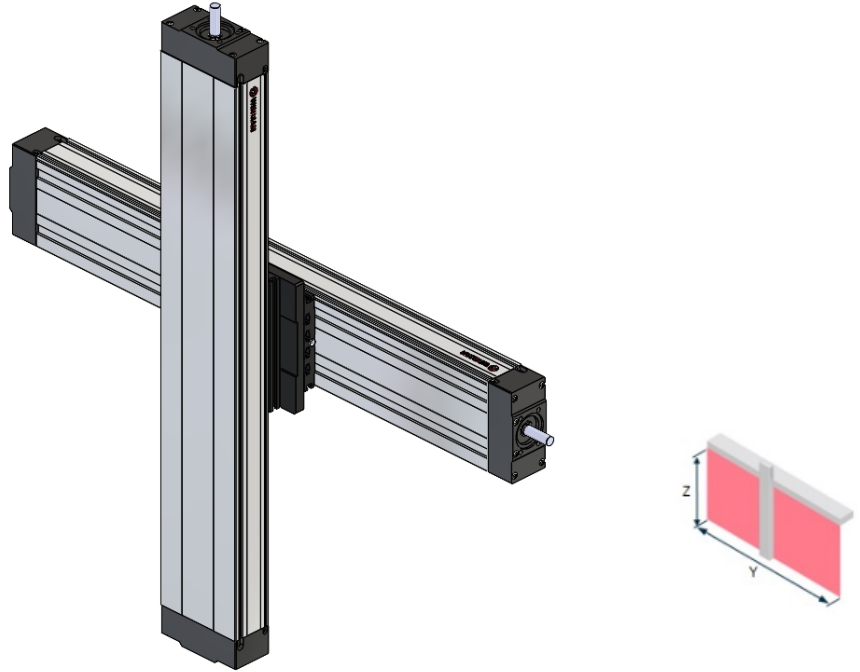


W2CC / Y-Z Axis Connection

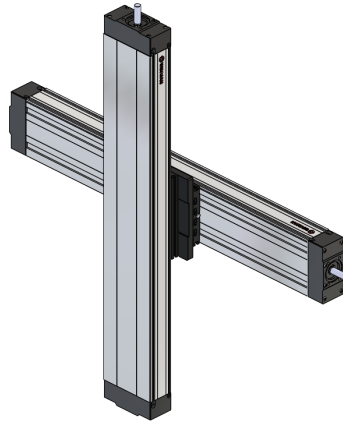
W2CC - XX - XXXX - XX - XX - XXXX - XX - XX - X
1 2 3 4 5 6 7 8 9
 Model Size Stroke Y Axis Lead Y Axis Y Axis Mounting Kit Stroke Z Axis Lead Z Axis Z Axis Mounting Kit Motor Position



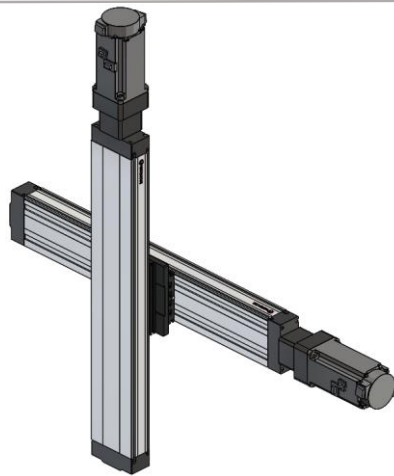
Type	Axis	Linear axis	Lead	Smin (mm)	Smax (mm)	mex max (kg)
W2CC-01	Y	WMCD-110	5 mm	50 mm	1325 mm	32,5 kg
			10 mm			
			16 mm			
	Z	WMCD-110	5 mm	50 mm	1325 mm	
			10 mm			
			16 mm			
W2CC-02	Y	WMCD-145	5 mm	60 mm	1325 mm	32,5 kg
			10 mm			
			20 mm			
	Z	WMCD-110	5 mm	50 mm	1590 mm	
			10 mm			
			16 mm			
W2CC-03	Y	WMCD-145	5 mm	60 mm	1590 mm	61 kg
			10 mm			
			20 mm			
	Z	WMCD-145	5 mm	60 mm	1590 mm	
			10 mm			
			20 mm			

W2CC / Y-Z Axis Connection

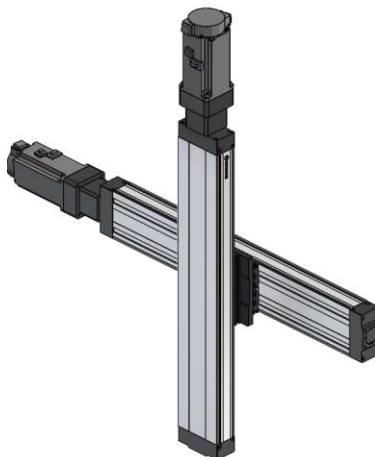
W2CC WDAK / WDPK - Mounting Kit



W2CC-XX-XXXX-XX-00-XXXX-XXX-00-0

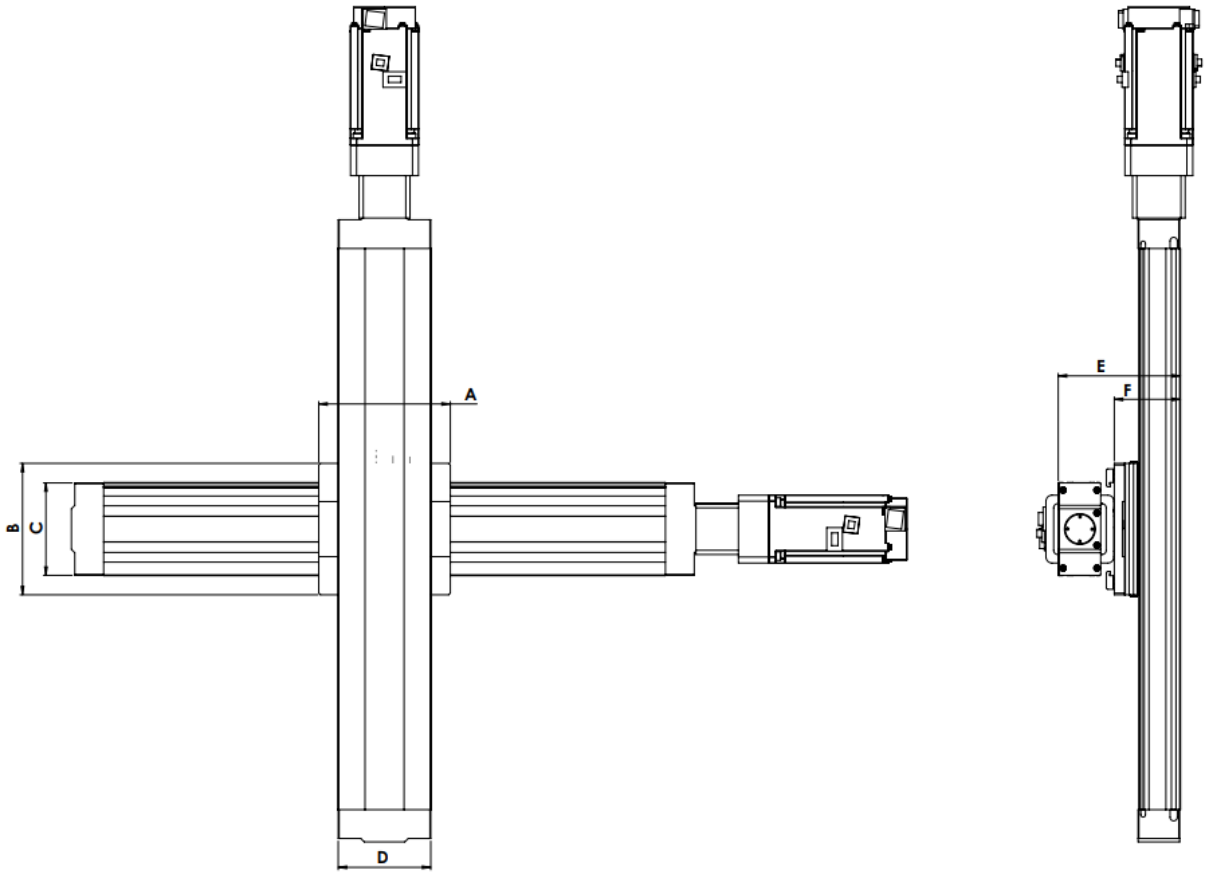


W2CC-XX-XXXX-XX-01-XXXX-XXX-01-R



W2CC-XX-XXXX-XX-01-XXXX-XXX-01-L

Technical Drawing





	AXIS	LINEAR AXIS
W2CC-01	Y	WMCD-110
	Z	WMCD-110
W2CC-02	Y	WMCD-145
	Z	WMCD-110
W2CC-03	Y	WMCD-145
	Z	WMCD-145

TYPE	A	B	C	D	E	F
W2CC-01	155	155	109	109	144	78
W2CC-02	185	155	145	109	162,6	96,6
W2CC-03	185	185	145	145	181,2	96,6

W2CC Assembly Parts

W2CC ASSEMBLY PARTS

	CODES	DETAIL VIEW
W2CC-01 ASSEMBLY PARTS	199639	
W2CC-02 ASSEMBLY PARTS	199646	
W2CC-03 ASSEMBLY PARTS	199656	