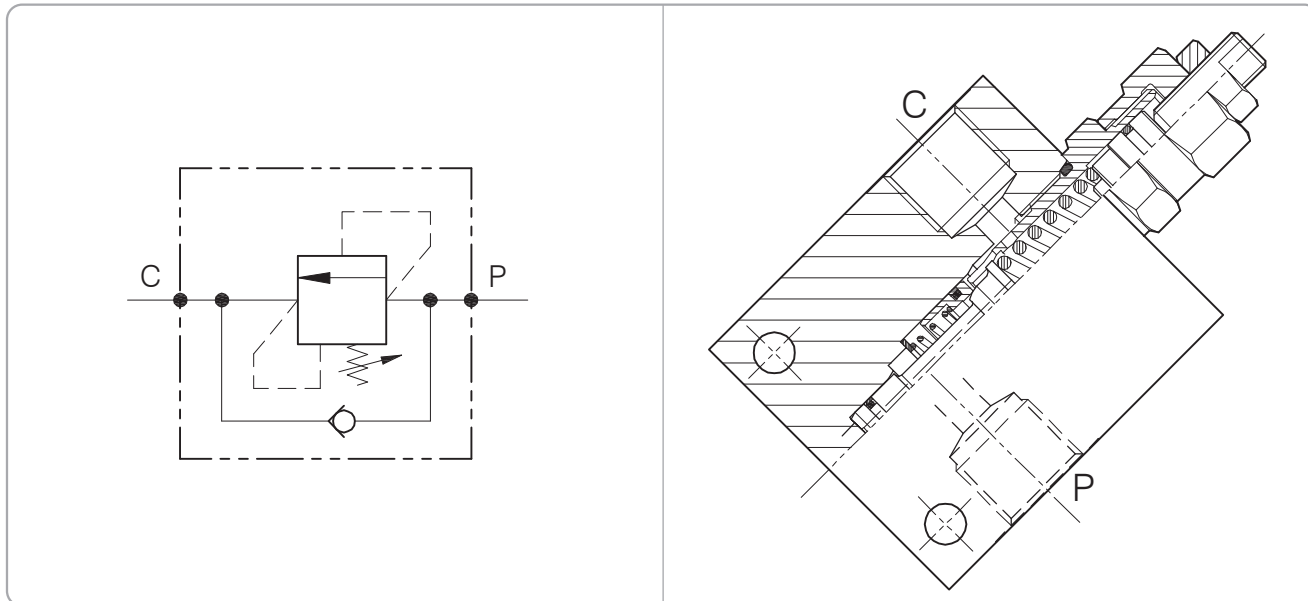


VSQ-D-C-...

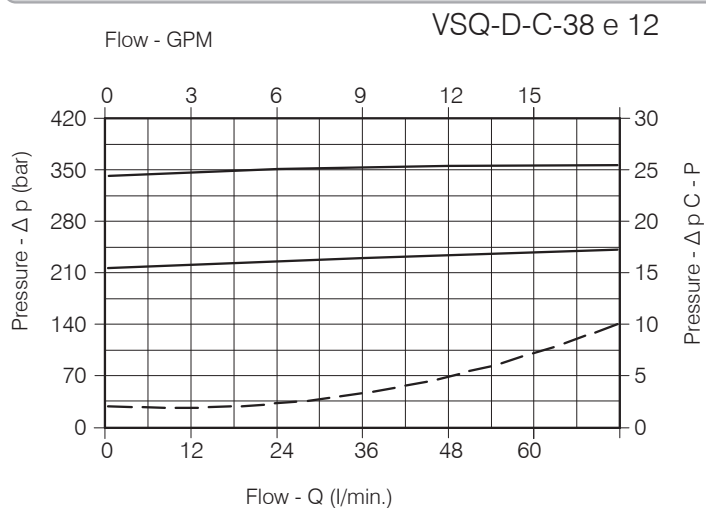
SEQUENCE VALVE, DIFFERENTIAL AREA PISTON TYPE VALVE WITH LINE BODY



Performance

Min/Max rated size	DN 8/10
Min/Max flow-rate	1/60 l/min - 0.26/15.9 GPM
Max working pressure	350 bar - 5075 PSI
Max setting pressure	350 bar - 5075 PSI
Room temperature	-30°C + 50°C
Oil temperature	-30°C + 80°C
Recommended filtration	30 micron
Weight 3/8" GAS	0.521 Kg
Weight 1/2" GAS	0.642 Kg

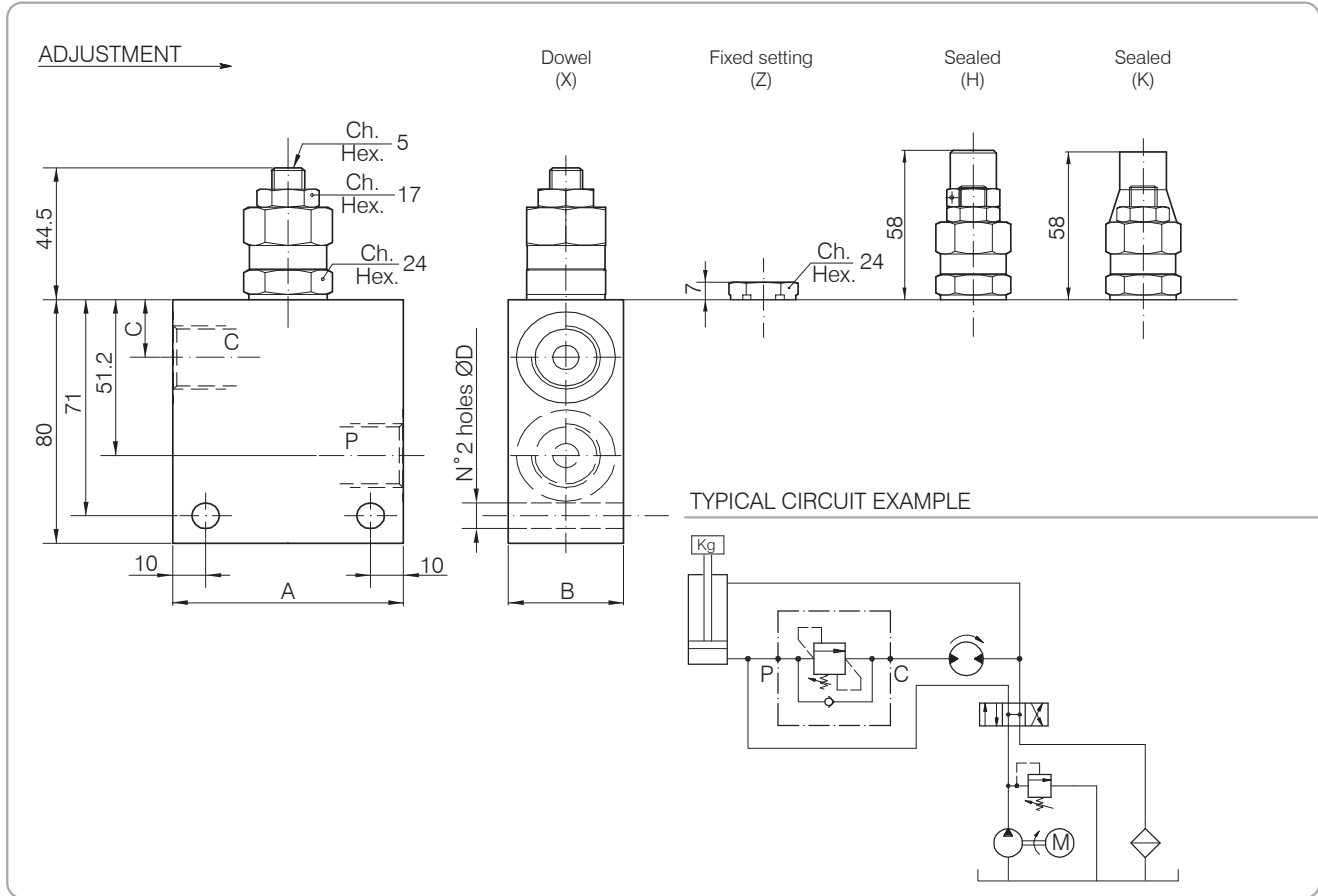
Performance Details



Oil viscosity 46 cSt at 50°C

VSQ-D-C-...

Hydraulic valves and integrated components



Dimensions

Setting Range	A	B	C	D	Port size P-C GAS (BSPP)	Rated size DN	Max flow-rate l/min - GPM
70	297	60	30	21	6.5	3/8"	8
71	298	70	35	19	8.5	1/2"	10

Ordering Code

2 . 70 . 0 . X . 0

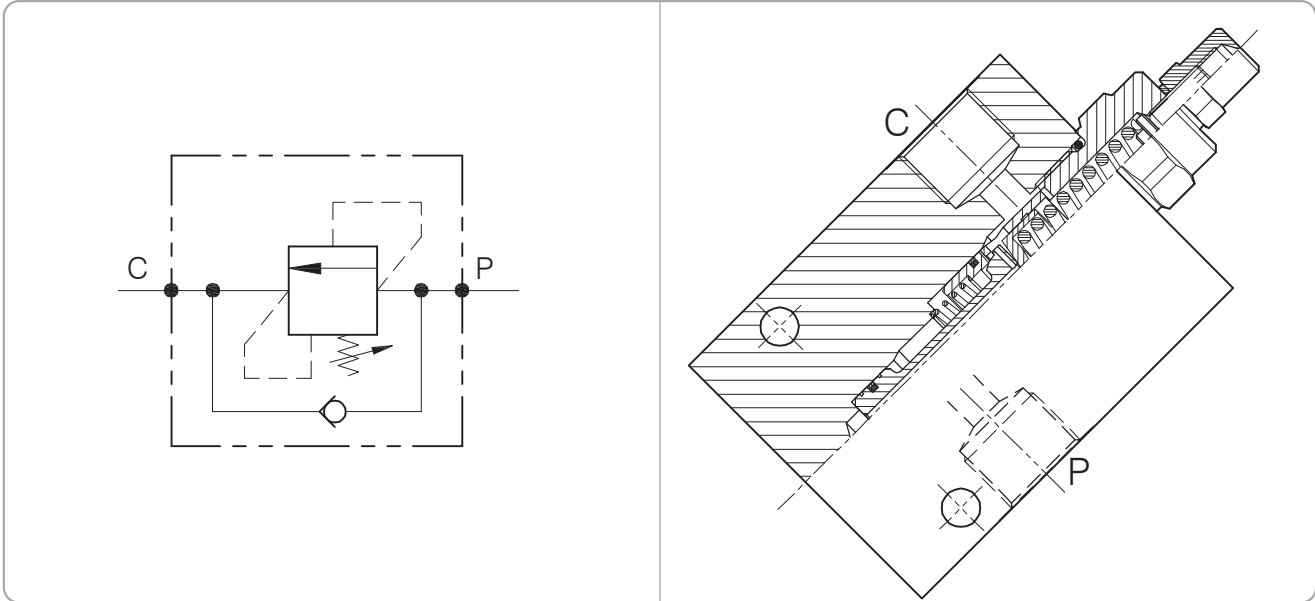
Setting Range			
70		297	
71		298	
Setting range 30÷220 bar (green spring)		Setting range 60÷350 bar (yellow spring)	
Std. bar setting (Q=5 l/1') 210 bar	Pressure rise - turn of screw (138)	Std. bar setting (Q=5 l/1') 550 bar	Pressure rise - turn of screw (142)

Adjustment

- X : Dowel
- Z : Fixed setting
- H : Sealed
- K : Sealed

VSQ-D-C-...

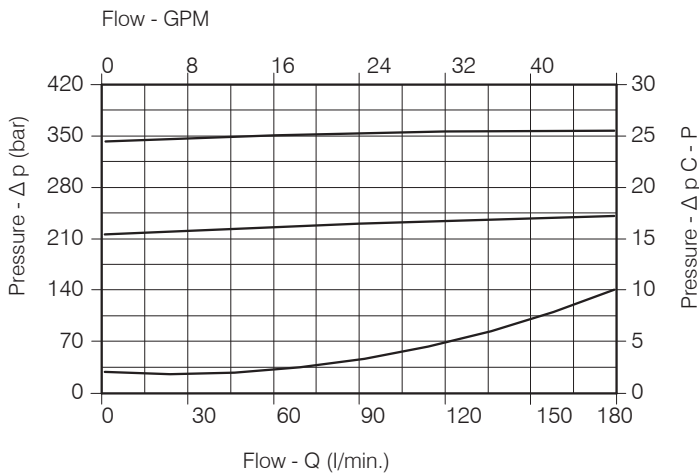
SEQUENCE VALVE, DIFFERENTIAL AREA PISTON TYPE VALVE WITH LINE BODY



Performance

Min/Max rated size	DN 12/14
Min/Max flow-rate	1/180 l/min - 0.26/48 GPM
Max working pressure	350 bar - 5075 PSI
Max setting pressure	350 bar - 5075 PSI
Room temperature	-30°C + 50°C
Oil temperature	-30°C + 80°C
Recommended filtration	30 micron
Weight 3/4" GAS	1.349 Kg
Weight 1" GAS	1.585 Kg

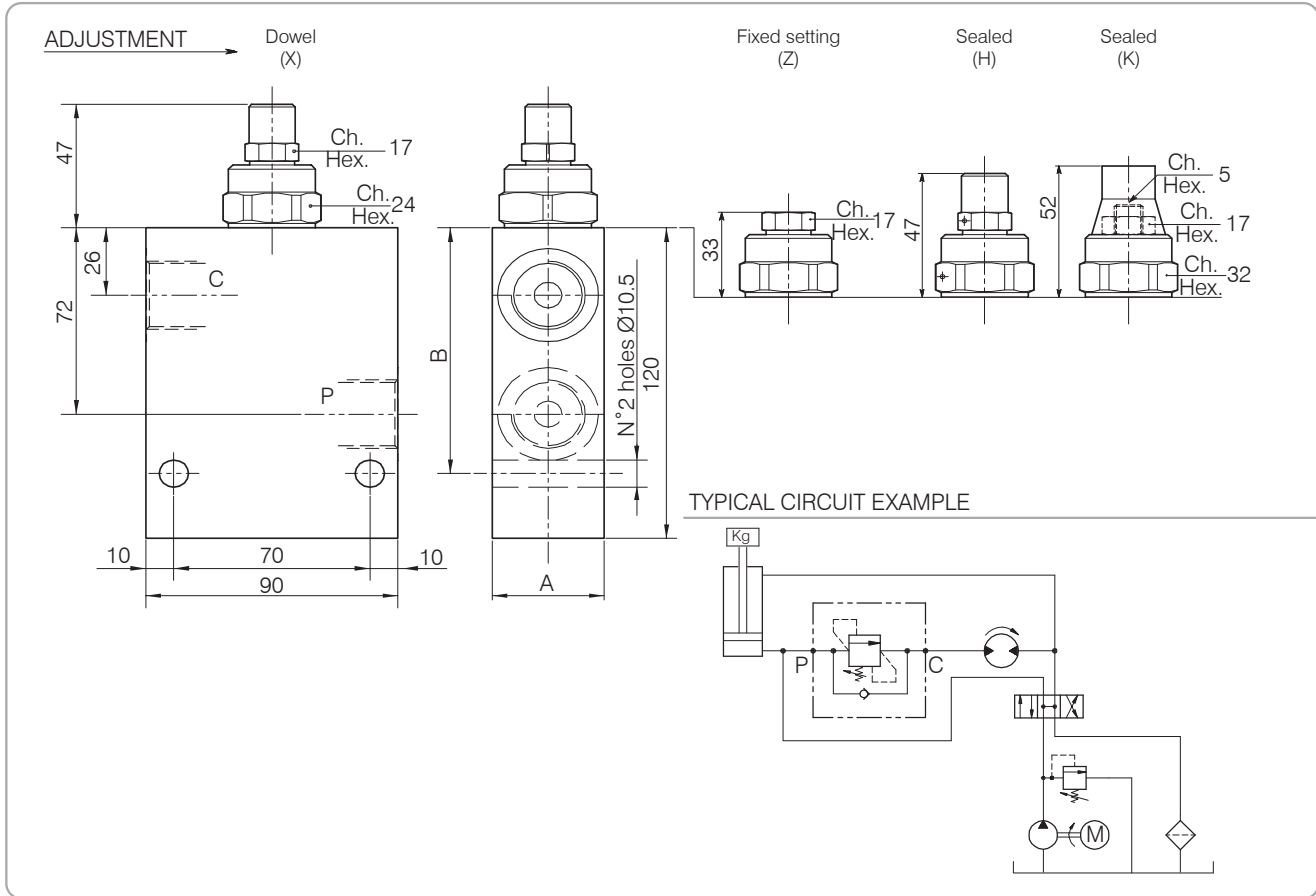
Performance Details



Oil viscosity 46 cSt at 50°C

VSQ-D-C-...

Hydraulic valves and integrated components



Dimensions

Setting Range	A	B	Port size P-C GAS (BSPP)	Rated size DN	Max flow-rate l/min - GPM
691	40	95	3/4"	12	150-40
692	50	107	1"	14	180-48

Ordering Code

2 • 6 9 1 • 0 • X • 0

Setting Range	
691	
692	
Setting range 60 ÷ 350 bar (yellow spring)	
Std. bar setting (Q=5 l/1') 350 bar	Pressure rise - turn of screw (-)

Adjustment

- X : Dowel
- Z : Fixed setting
- H : Sealed
- K : Sealed