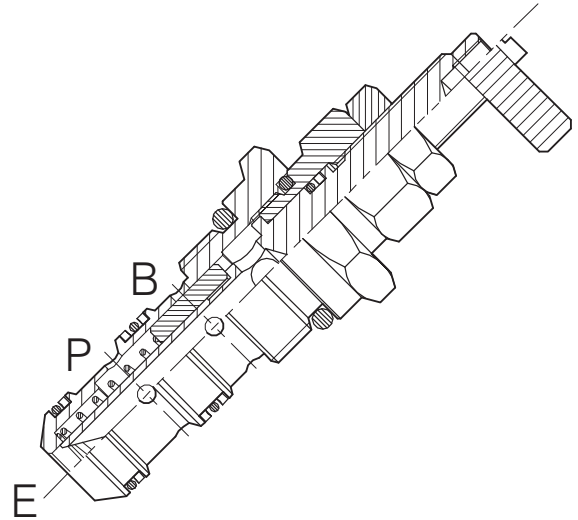
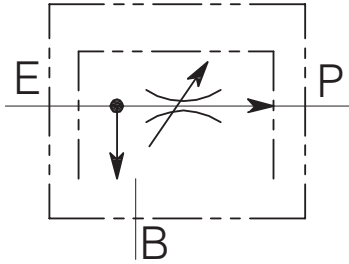


VRF-CN-3V-...

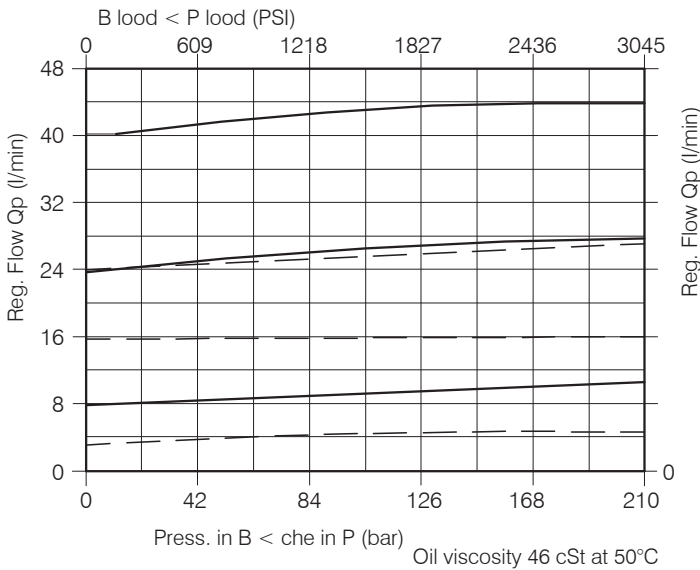
CARTRIDGE STYLE PRIORITY FLOW CONTROL VALVE



Performance

Rated size	DN 8
Min/Max flow-rate	1/45 l/min - 0.26/11.9 GPM
Max working pressure	210 bar - 3045 PSI
Room temperature	-30°C + 50°C
Oil temperature	-30°C + 80°C
Recommended filtration	50 micron
Tightening torque	50 ÷ 60 Nm
Weight	0.157 Kg

Performance Details



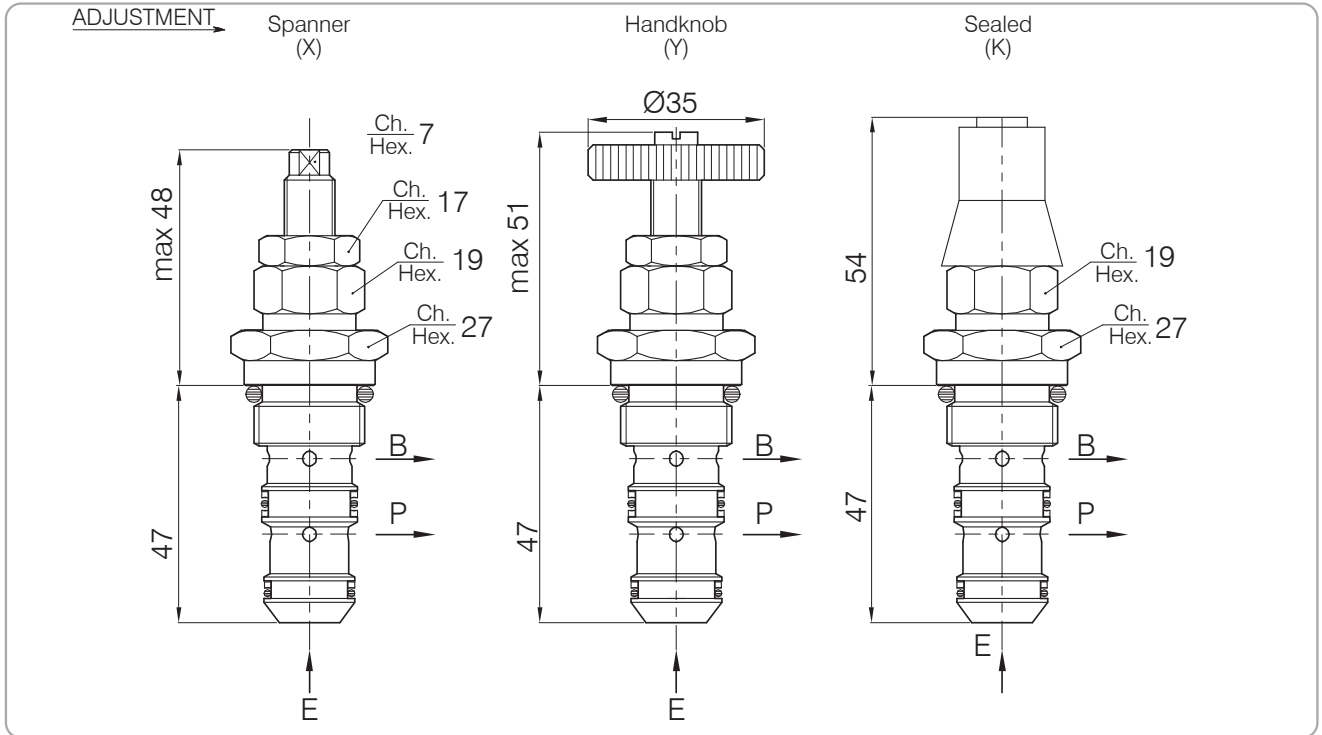
NOTE :

Compensated flow E to R
Reverse flow allowed but not compensated
(throttle operation)

--- 3/8"
— 1/2"

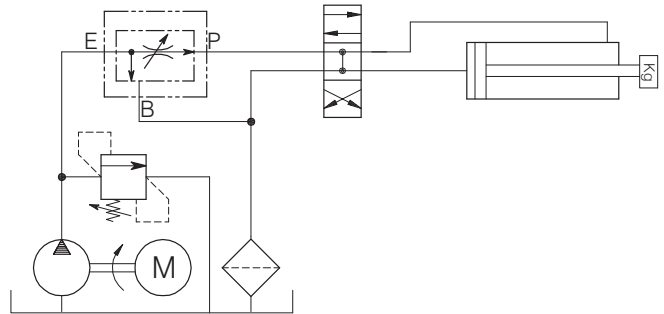
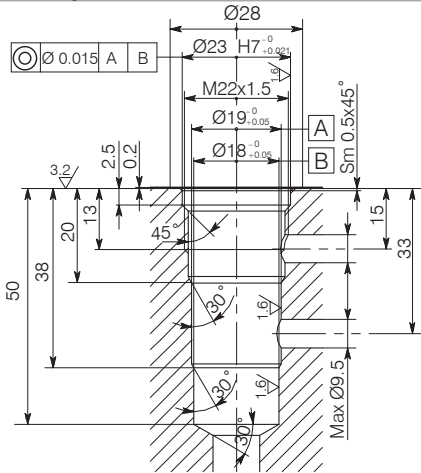
VRF-CN-3V-...

Hydraulic valves and integrated components



Cavity CE.017.N

Typical Circuit Example



The valve seat should be perfectly tooled

Ordering Code

4 . 1 . 0 . X . 0

Cracking pressure

- X : Spanner
- Y : Handknob
- K : Sealed