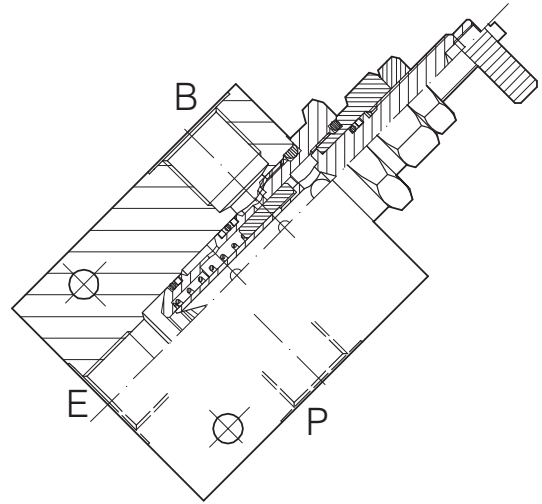
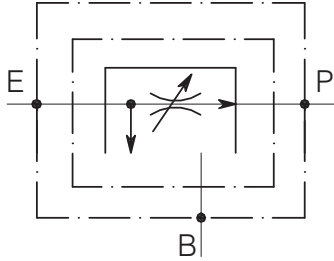


VRF-CN-3V-C-...-L-...

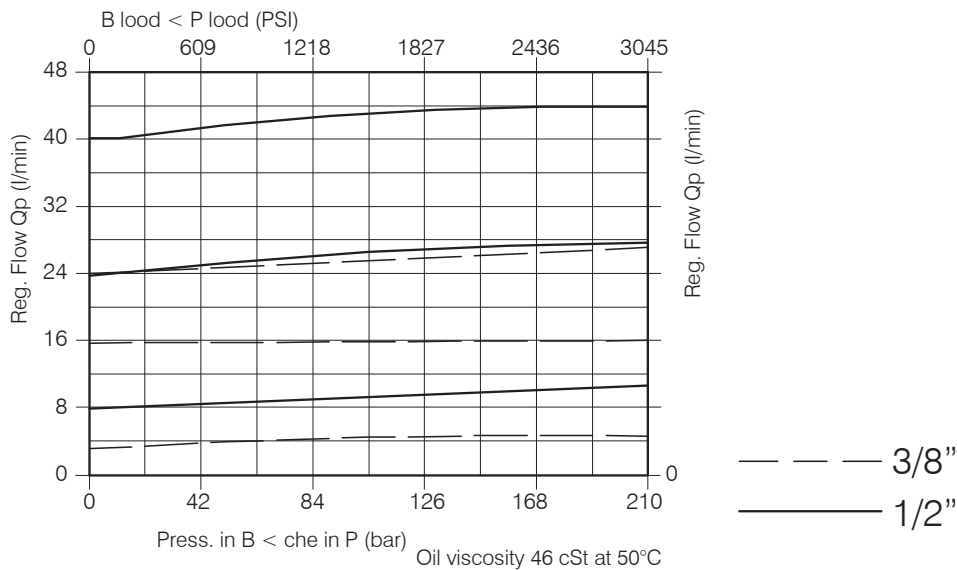
CARTRIDGE STYLE FLOW CONTROL VALVE WITH IN LINE BODY



Performance

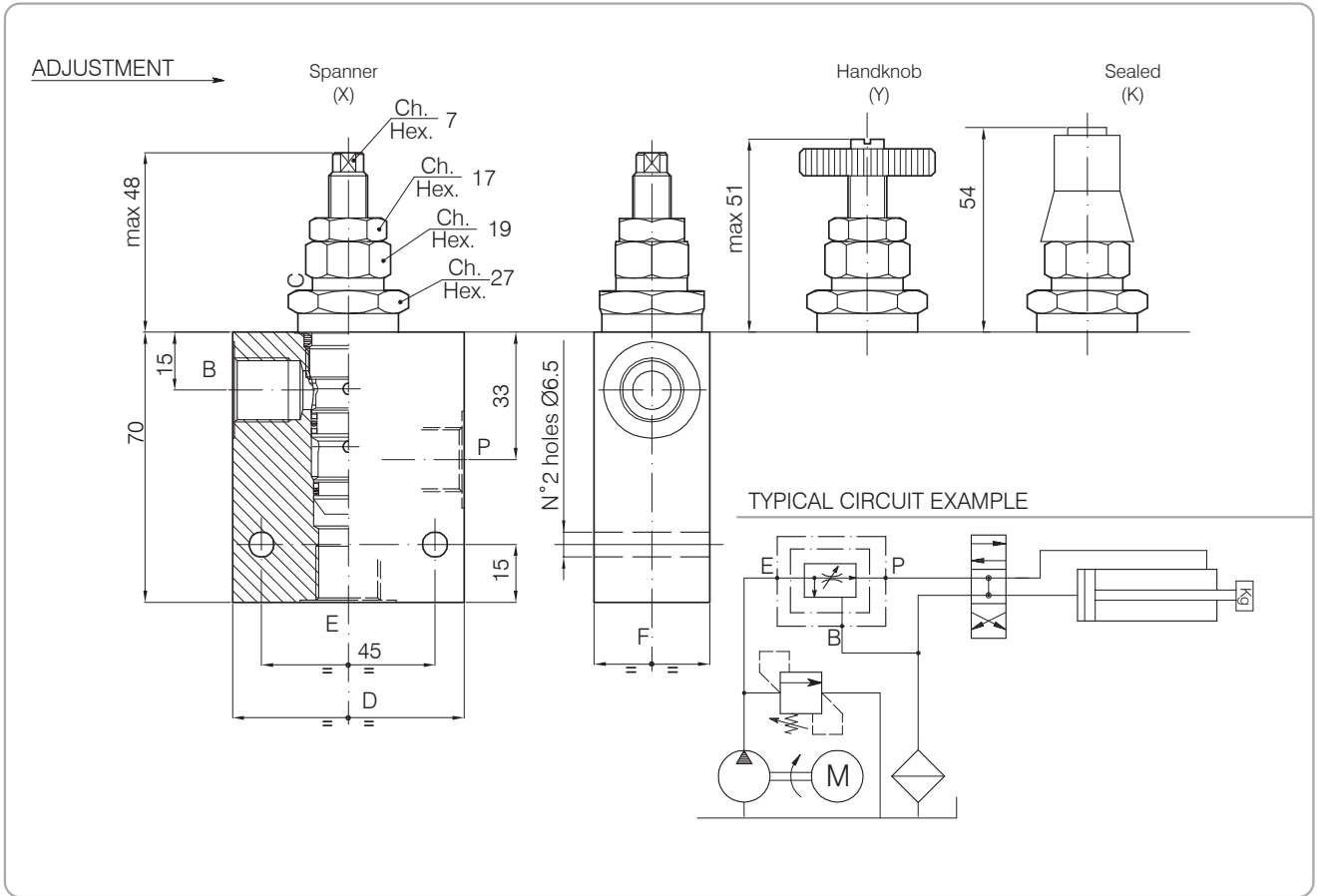
Rated size	DN 6
Min/Max flow-rate	1/45 l/min - 0.26/11.9 GPM
Max working pressure	210 bar - 3045 PSI
Room temperature	-30°C + 50°C
Oil temperature	-30°C + 80°C
Recommended filtration	50 micron
Weight	0.426 Kg. 3/8" GAS
Weight	0.526 Kg. 1/2" GAS

Performance Details



VRF-CN-3V-C-...-L-...

Hydraulic valves and integrated components



Dimensions

Valve Number	D	F	Port size E-P-B GAS (BSPP)	Max flow-rate l/min - GPM
016	60	30	3/8"	30-7.9
017	70	35	1/2"	45-11.9

Ordering Code



Valve Number
16
17

Adjustment
 X : Spanner
 Y : Handknob
 K : Sealed