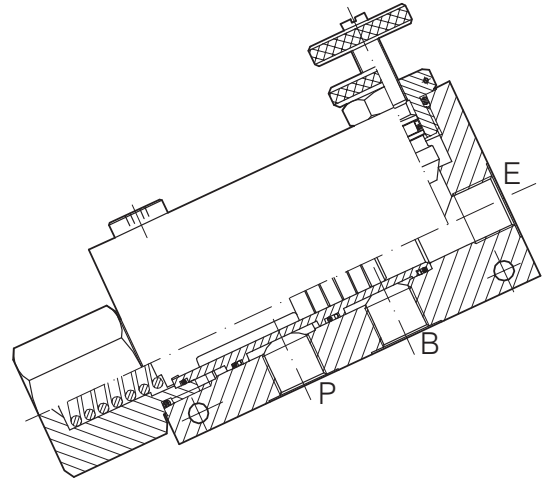
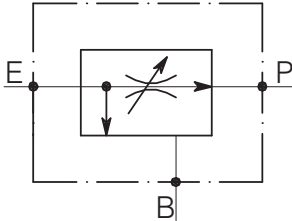


VRF-3V-...

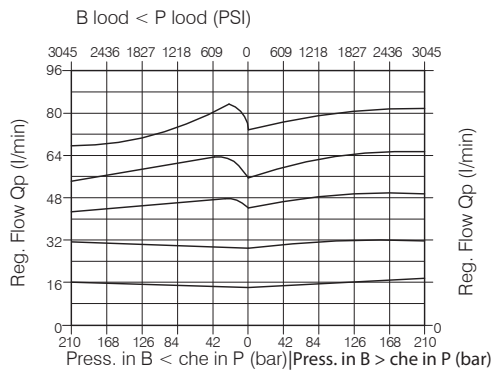
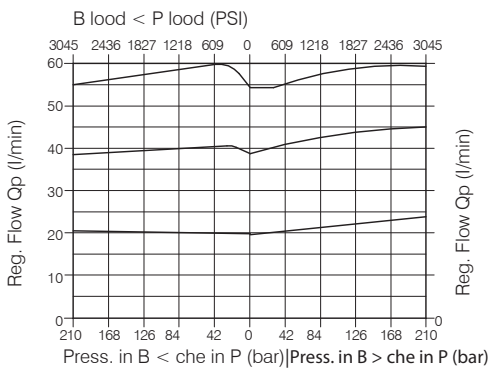
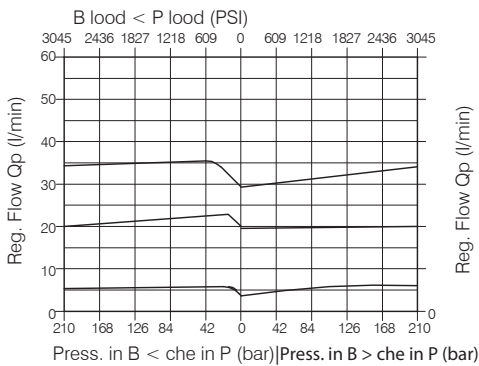
PRIORITY FLOW CONTROL COMBINATION STYLE



Performance

Min/max rated size	DN 6/11
Min/Max flow-rate	1/150 l/min - 0.26/39.6 GPM
Max working pressure	210 bar - 3045 PSI
Room temperature	-30°C + 50°C
Oil temperature	-30°C + 80°C
Recommended filtration	50 micron
Weight	1.194 Kg. 3/8" GAS
Weight	1.171 Kg. 1/2" GAS
Weight	2.144 Kg. 3/4" GAS

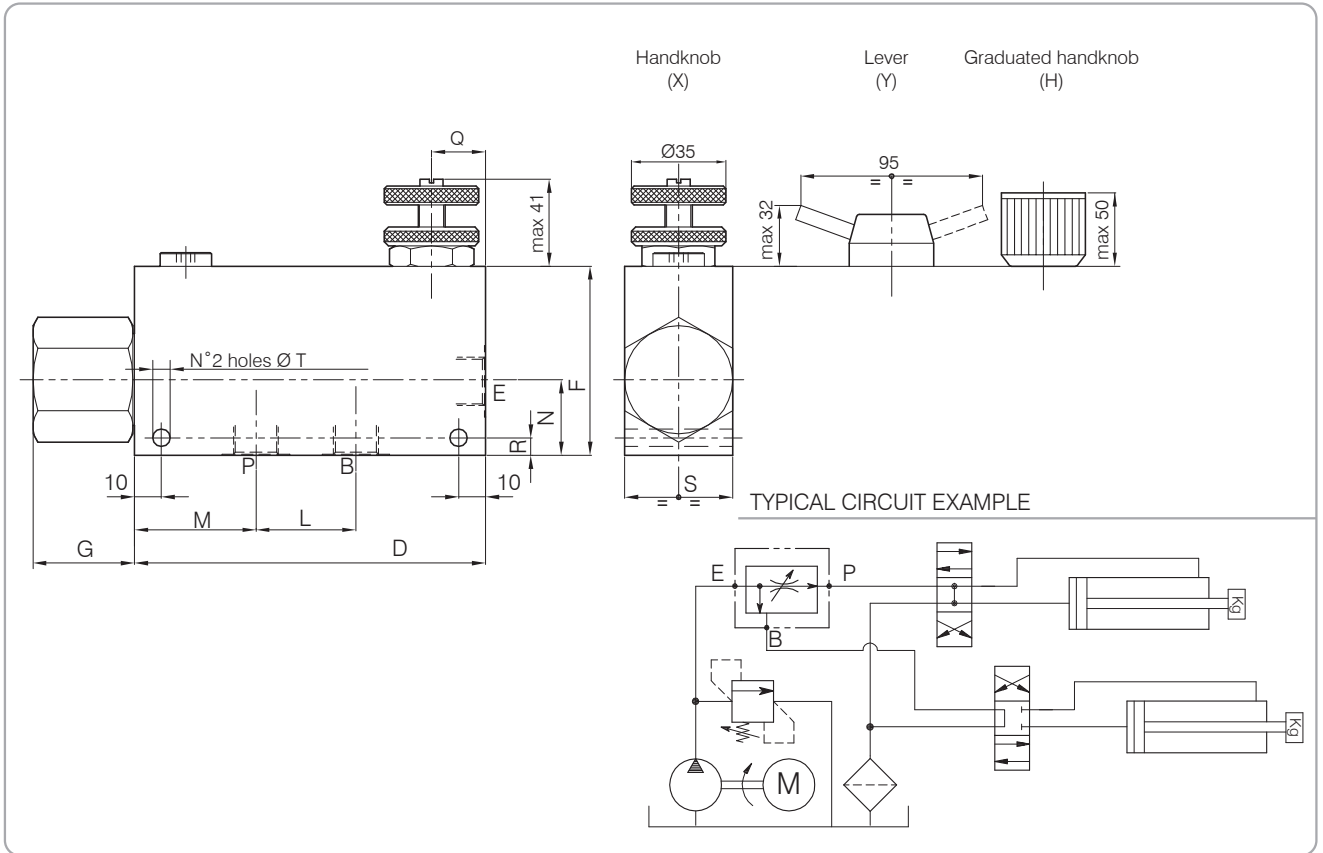
Performance Details



Oil viscosity 46 cSt at 50°C

VRF-3V...

Hydraulic valves and integrated components



Dimensions

Valve Number	D	F	G	L	M	N	Q	R	S	T	Port size E-P-B GAS (BSPP)	Rated size DN	QP l/min - GPM	QE l/min - GPM
3	130	70	38	37	45	28	20	6.5	40	6.5	3/8"	6	30-7.9	55-14.5
5	130	70	38	37	45	28	20	6.5	40	6.5	1/2"	8	55-14.5	90-23.8
7	155	90	35	44	54	35	25	7.5	50	8.5	3/4"	11	90-23.8	150-39.6

QE = Max admitted inlet flow "E" - l/min

QP = Max delivery in priority "P" - l/min

Ordering Code

4 . 3 . 0 . X . 0

Valve Number
3
5
0

Adjustment

- X : Spanner
- Y : Handknob
- H : Graduated handknob
- K : Sealed