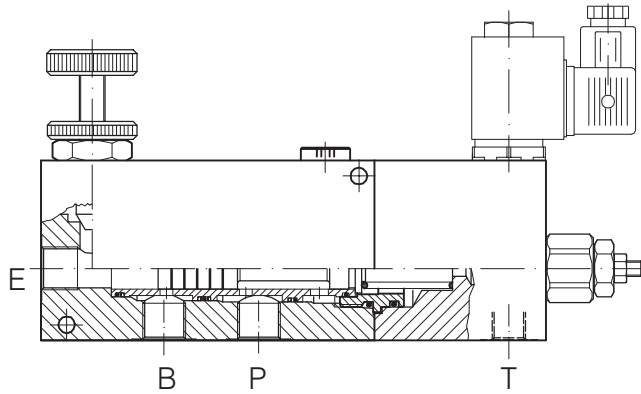


**VRF-3V + VMP + VMS-...**

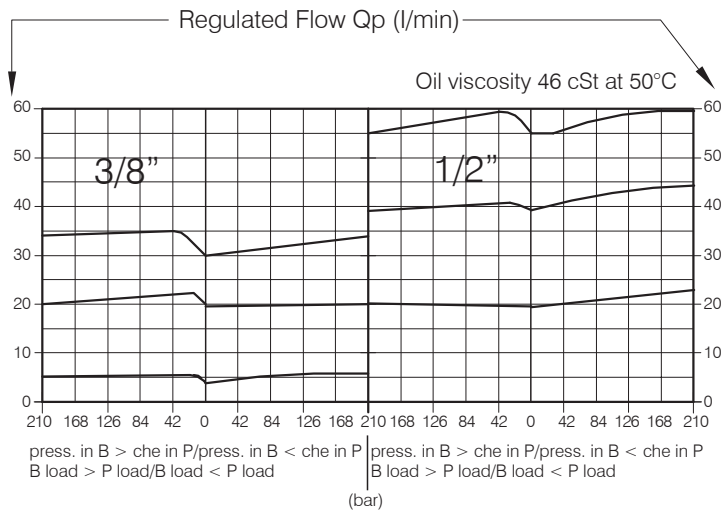
**PRIORITY FLOW CONTROL, HAMMER VERSION**



**Performance**

Rated size	
Inlet flow-rate	55/90 l/min
Max working pressure	350 bar - 5075 PSI
Room temperature	-30°C + 50°C
Oil temperature	-30°C + 80°C
Recommended filtration	50 micron
Weight	3.977 Kg. 3/8" GAS
Weight	4.019 Kg. 1/2" GAS

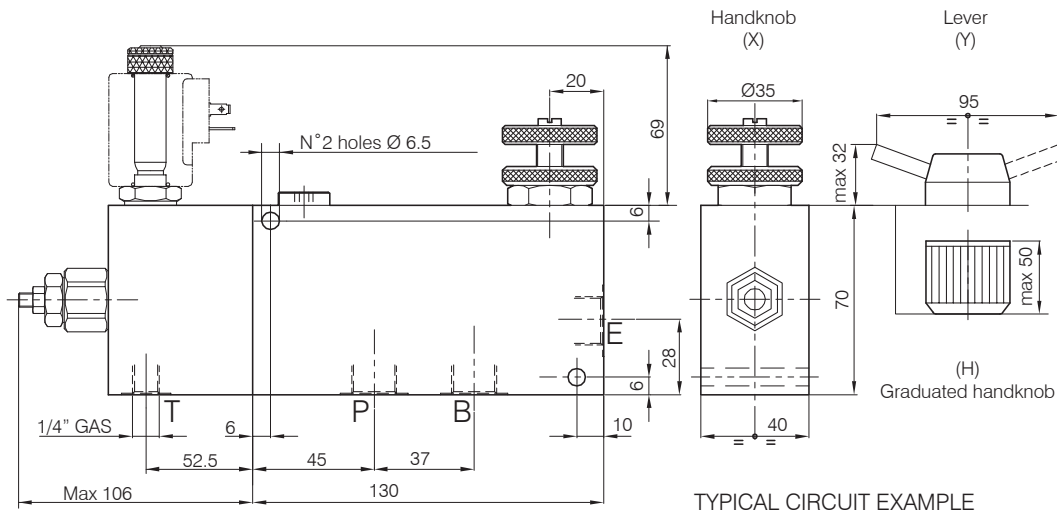
**Performance Details**



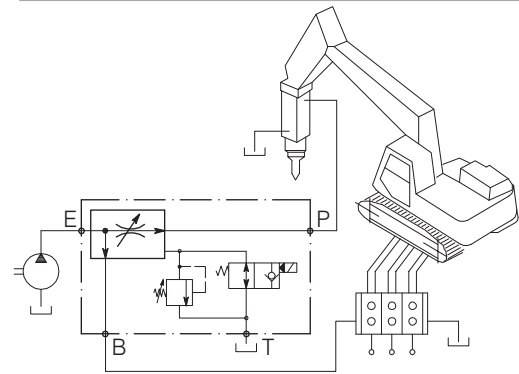
Oil viscosity 46 cSt at 50°C

**VRF-3V+VMP+VMS-...**

**Hydraulic valves and integrated components**



TYPICAL CIRCUIT EXAMPLE



**Dimensions**

Setting Range		Port size E-P-B GAS (BSPP)	QP l/min - GPM	QE l/min - GPM
194	195	3/8"	30-7.9	55-14.5
196	197	1/2"	55-14.5	90-23.8

QE = Max admitted inlet flow "E" - l/min

QP = Max delivery in priority "P" - l/min

**Ordering Code**

4 . 1 9 4 . 0 . X . 0

Setting Range	
194	195
196	197
Setting range 20÷350 bar	Setting range 10÷210 bar

**Adjustment**

- X : Spanner
- Y : Handknob
- H : Graduated handknob