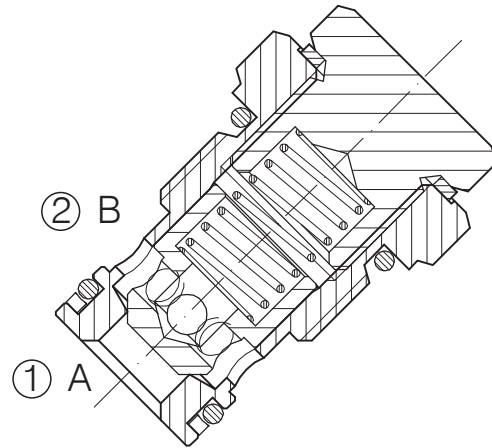
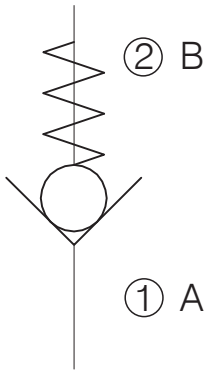


VNR-C-12-34-...

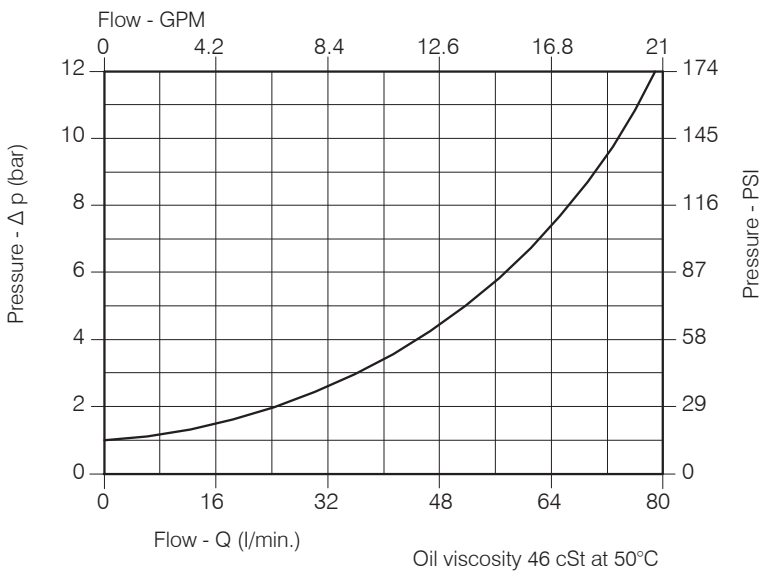
CARTRIDGE CHECK VALVE



Performance

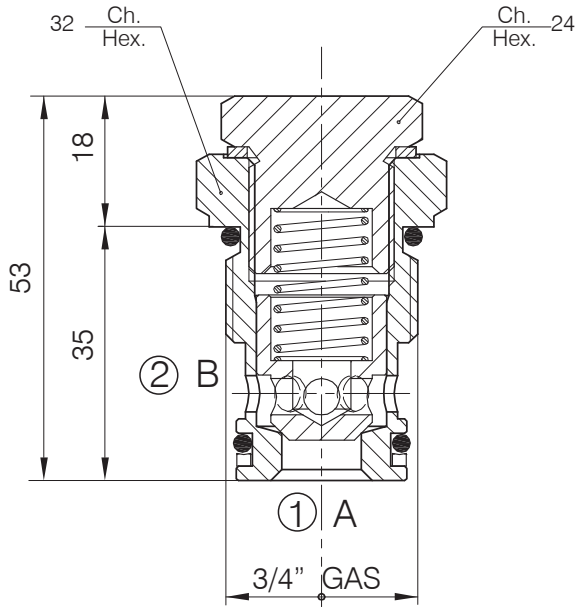
Rated size	DN 12
Min/Max flow-rate	1/80 l/min - 0.26/21.1 GPM
Max working pressure	350 bar - 5075 PSI
Room temperature	-30°C + 50°C
Oil temperature	-30°C + 80°C
Recommended filtration	50 micron
Tightening torque	145 ÷ 158 Nm
Weight	0.179 Kg

Performance Details

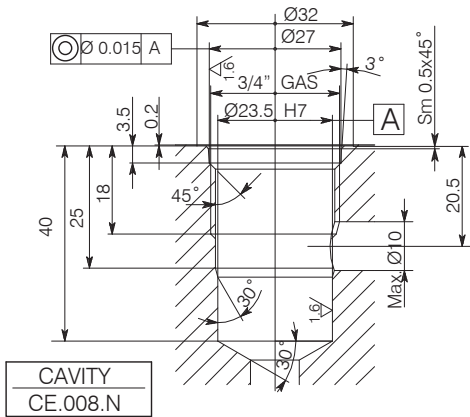


VNR-C-12-34-...

Hydraulic valves and integrated components



Cavity CE.008.N



The valve seat should be perfectly tooled

Ordering Code

3 . 3 5 . 0 . J . 0

Cracking pressure

- J : 1 bar
Spring (black)
- W : 6-8 bar
Spring (yellow)