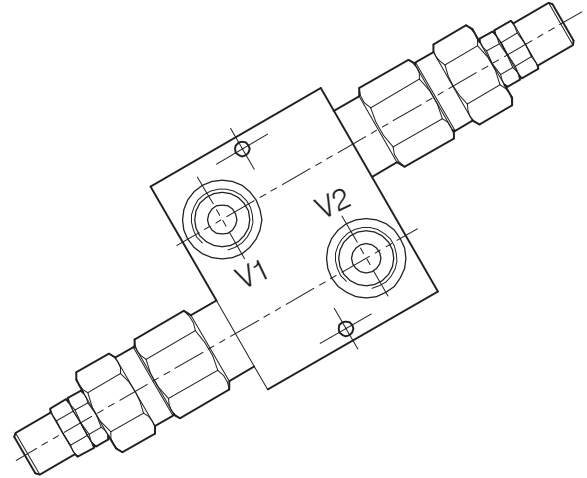
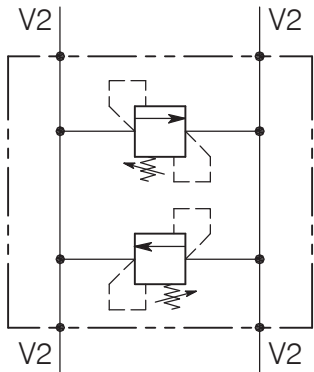


VMP-DI-...-...-L

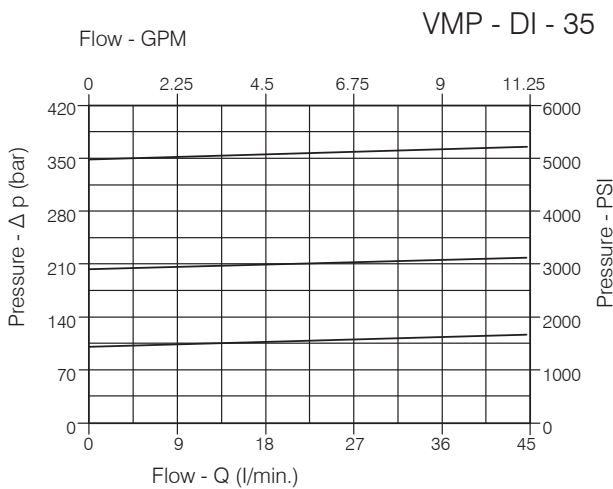
CARTRIDGE RELIEF, DIRECT ACTING POPPET TYPE VALVE WITH IN LINE BODY



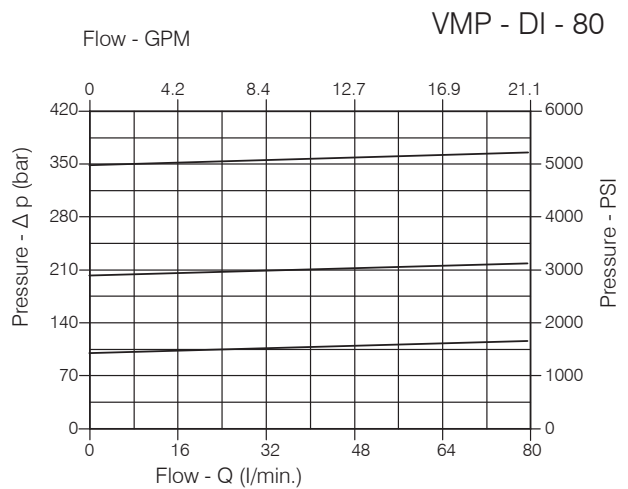
Performance

Min/Max rated size	DN 8/10
Min/Max flow-rate	1/80 l/min - 0.26/21 GPM
Max working pressure	350 bar - 5075 PSI
Max setting pressure	350 bar - 5075 PSI
Room temperature	-30°C + 50°C
Oil temperature	-30°C + 80°C
Recommended filtration	30 micron
Tightening torque	70 ÷ 85 Nm
Weight 3/8" GAS	0.882 Kg
Weight 3/4" GAS	1.582 Kg

Performance Details



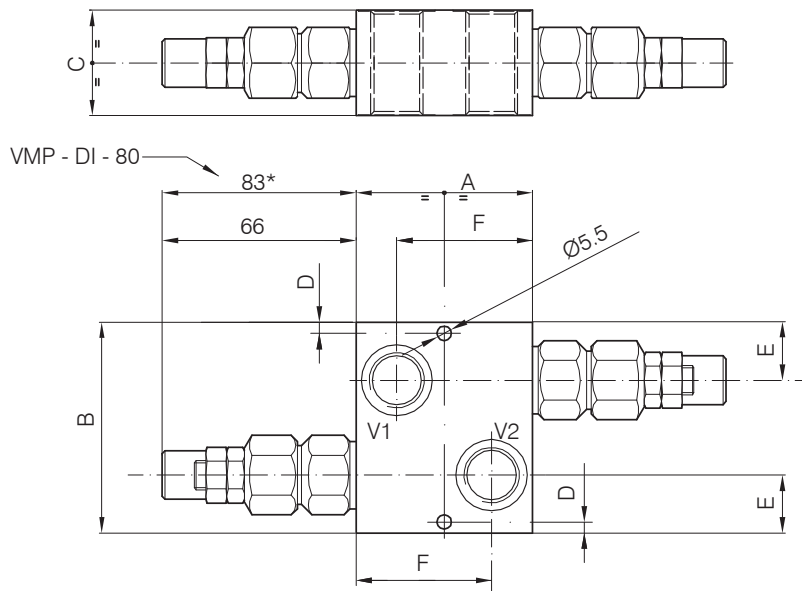
Oil viscosity 46 cSt at 50°C



Oil viscosity 46 cSt at 50°C

VMP-DI-...-...-L

Hydraulic valves and integrated components



Dimensions

Setting Range			A	B	C	D	E	F	Port size P-T GAS (BSPP)
51	281	282	80	60	40	5.5	18	64	3/8"
52	283	284							1/2"

Setting Range					A	B	C	D	E	F	Port size P-T GAS (BSPP)
53	285	286	287	288	80	60	40	5.5	18	64	3/4"
			332	3/4"							

Ordering Code

Setting Range					
51		281		282	
52		283		284	
Setting range 5÷100 bar (blue spring)		Setting range 10÷210 bar (green spring)		Setting range 20÷350 bar (yellow spring)	
Std. bar setting (Q=5 l/1')	Pressure rise - turn of screw 70 bar	Std. bar setting (Q=5 l/1')	Pressure rise - turn of screw 140 bar	Std. bar setting (Q=5 l/1')	Pressure rise - turn of screw 280 bar



Setting Range									
53		285		286		287		288	
								332	
Setting range 5÷50 bar (blue spring)		Setting range 10÷100 bar (black spring)		Setting range 10÷150 bar (green spring)		Setting range 25÷250 bar (yellow spring)		Setting range 40÷350 bar (red spring)	
Std. bar setting (Q=5 l/1')	Pressure rise - turn of screw 40 bar	Std. bar setting (Q=5 l/1')	Pressure rise - turn of screw 80 bar	Std. bar setting (Q=5 l/1')	Pressure rise - turn of screw 120 bar	Std. bar setting (Q=5 l/1')	Pressure rise - turn of screw 210 bar	Std. bar setting (Q=5 l/1')	Pressure rise - turn of screw 320 bar