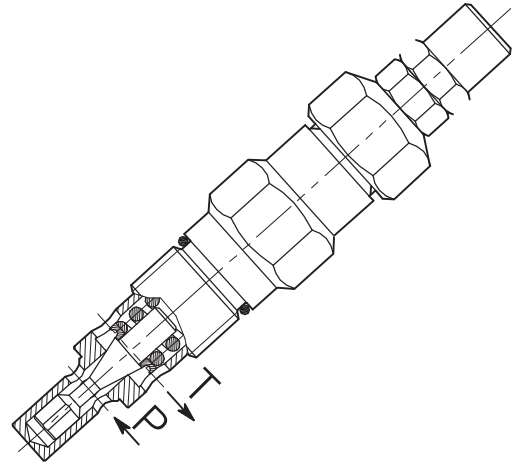
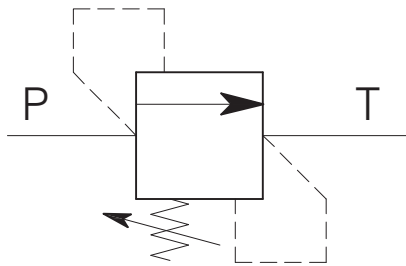


**VMP-80-...**

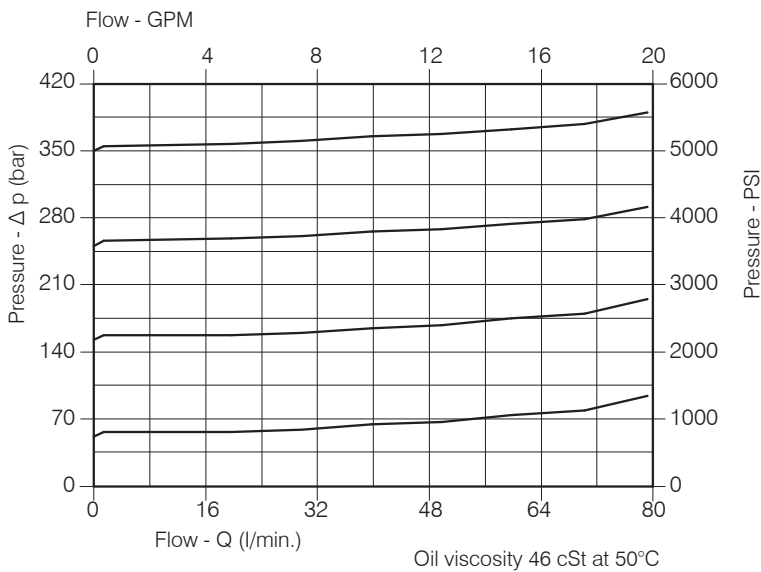
**CARTRIDGE RELIEF, DIRECT ACTING POPPET TYPE VALVE**



**Performance**

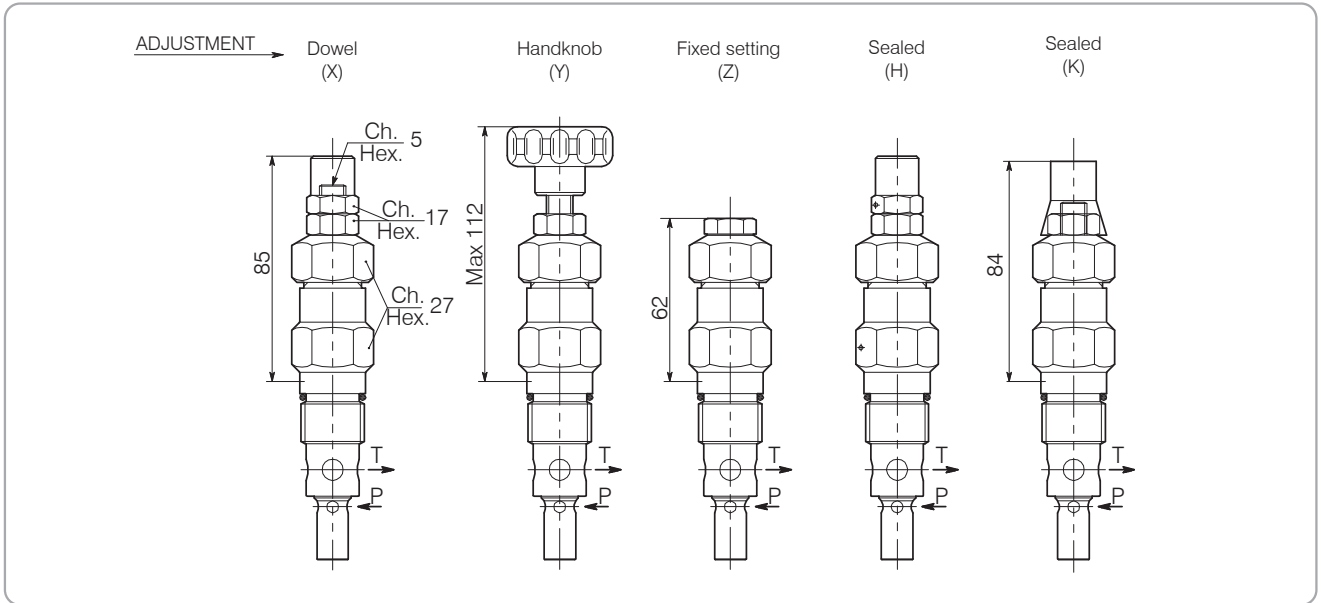
Rated size	DN 11
Min/Max flow-rate	80 l/min - 21 GPM
Max working pressure	350 bar - 5075 PSI
Max setting pressure	350 bar - 5075 PSI
Room temperature	-30°C + 50°C
Oil temperature	-30°C + 80°C
Recommended filtration	30÷50 micron
Tightening torque	83÷92 Nm
Weight	0.382 kg

**Performance Details**



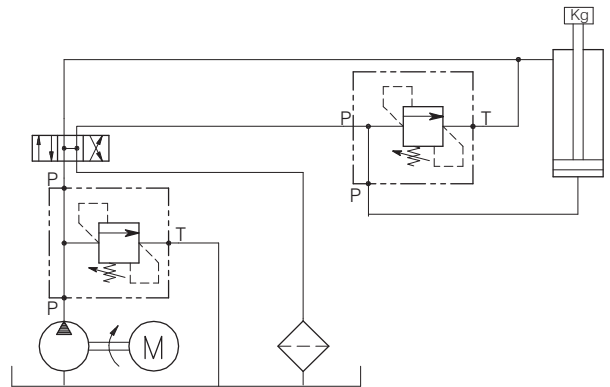
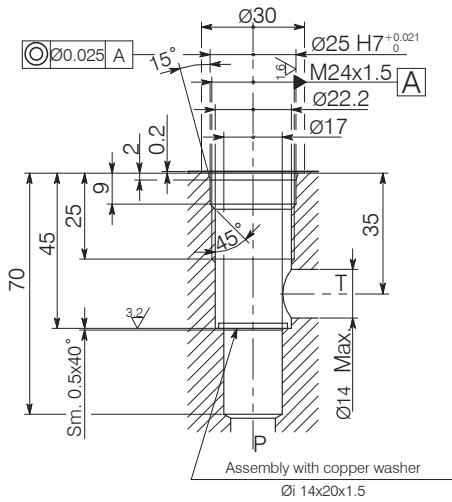
**VMP-80-...**

**Hydraulic valves and integrated components**



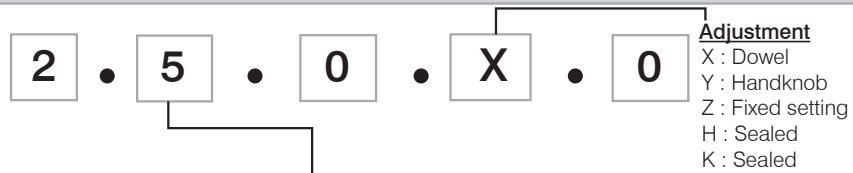
**Cavity CE.010.L**

**Typical Circuit Example**



The valve seat should be perfectly toolled

**Ordering Code**



Setting Range									
5		163		164		165		166	
Setting range 5÷50 bar (blue spring)		Setting range 10÷100 bar (black spring)		Setting range 10÷150 bar (green spring)		Setting range 25÷250 bar (yellow spring)		Setting range 40÷350 bar (red spring)	
Std. bar setting (Q=5 l/1')	Pressure rise - turn of screw	Std. bar setting (Q=5 l/1')	Pressure rise - turn of screw	Std. bar setting (Q=5 l/1')	Pressure rise - turn of screw	Std. bar setting (Q=5 l/1')	Pressure rise - turn of screw	Std. bar setting (Q=5 l/1')	Pressure rise - turn of screw
40 bar	(-)	80 bar	(-)	120 bar	(-)	210 bar	(-)	320 bar	(-)