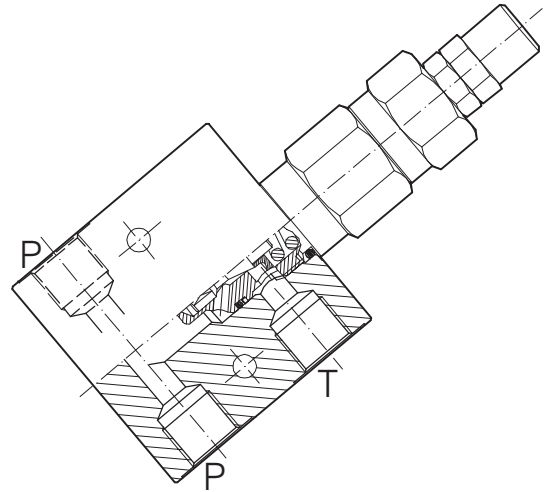
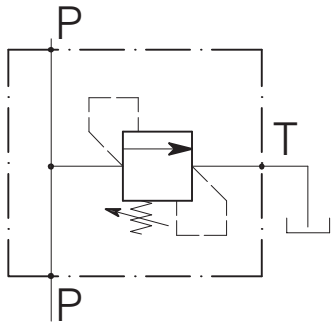


VMP-45-...-C-...-L-SN

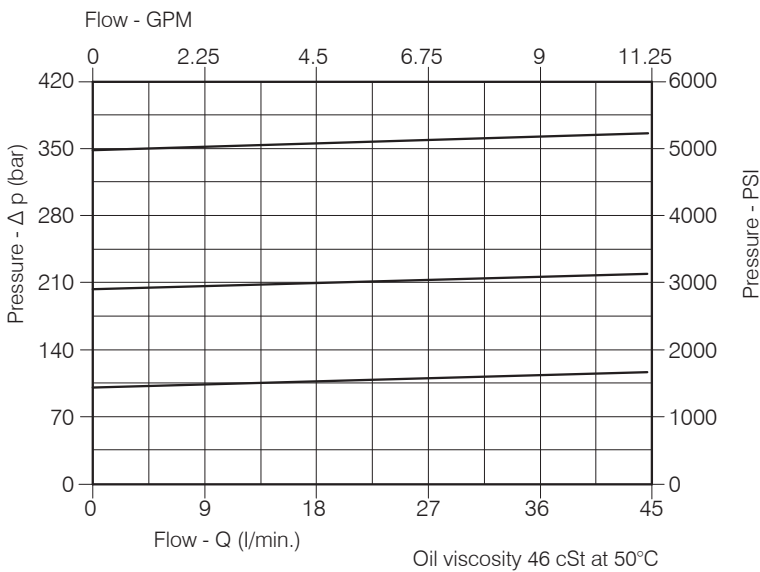
CARTRIDGE RELIEF, DIRECT ACTING POPPET TYPE VALVE WITH IN LINE BODY



Performance

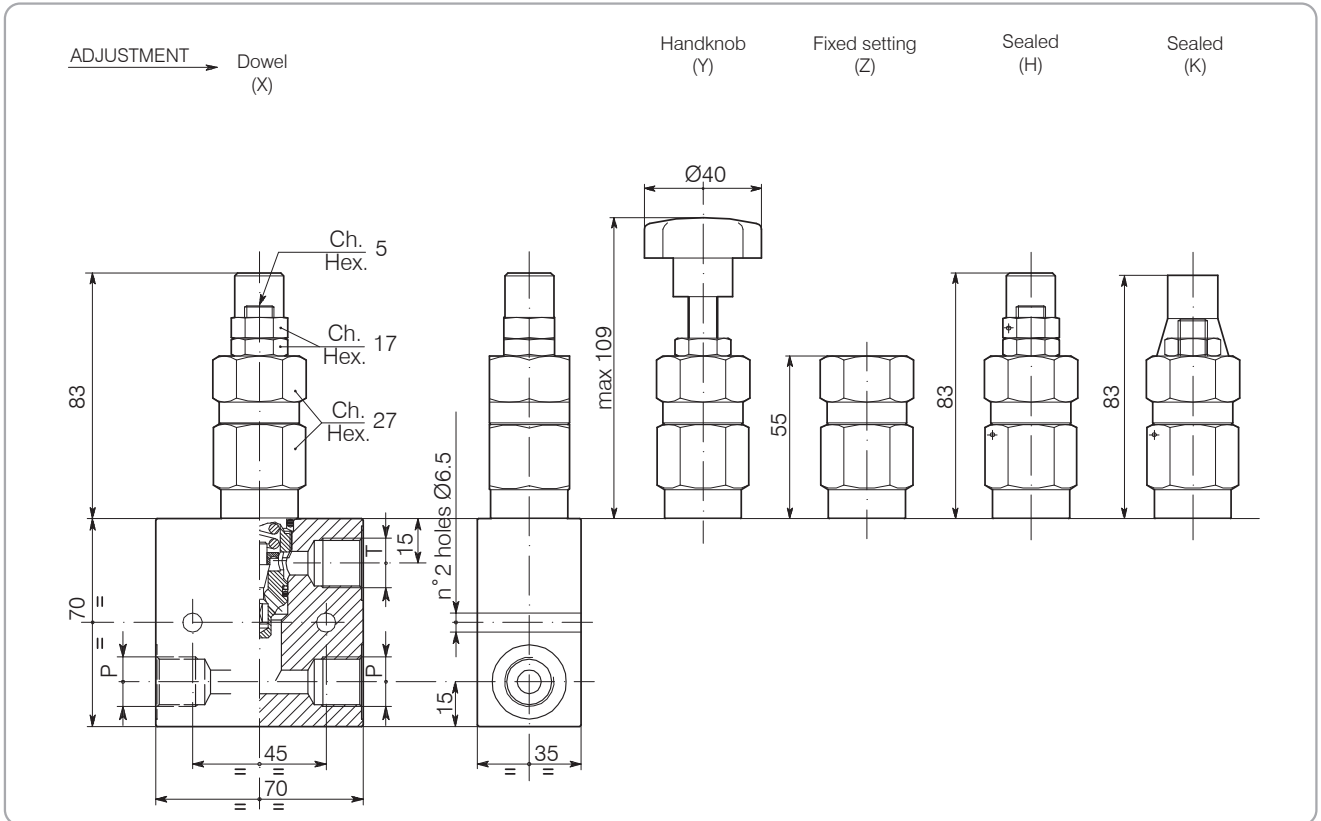
Rated size	DN 9
Min/Max flow-rate	45 l/min - 11.9 GPM
Max working pressure	350 bar - 5075 PSI
Max setting pressure	350 bar - 5075 PSI
Room temperature	-30°C + 50°C
Oil temperature	-30°C + 80°C
Recommended filtration	30 ÷ 50 micron
Weight 3/8" GAS	0.711 Kg
Weight 1/2" GAS	0.690 kg

Performance Details



VMP-45-...-C-...-L-SN

Hydraulic valves and integrated components



Dimensions

Setting Range			Port size P-T GAS (BSPP)
038	274	275	3/8"
039	276	277	1/2"

Ordering Code

2 • **3 8** • **0** • **X** • **0**

Setting Range					
38		274		275	
39		276		277	
Setting range 5 ÷ 100 bar (blue spring)		Setting range 10 ÷ 210 bar (green spring)		Setting range 20 ÷ 350 bar (yellow spring)	
Std. bar setting (Q=5 l/1')	Pressure rise - turn of screw	Std. bar setting (Q=5 l/1')	Pressure rise - turn of screw	Std. bar setting (Q=5 l/1')	Pressure rise - turn of screw
80 bar	(--)	180 bar	(--)	320 bar	(--)

Adjustment

- X : Dowel
- Y : Handknob
- Z : Fixed setting
- H : Sealed
- K : Sealed