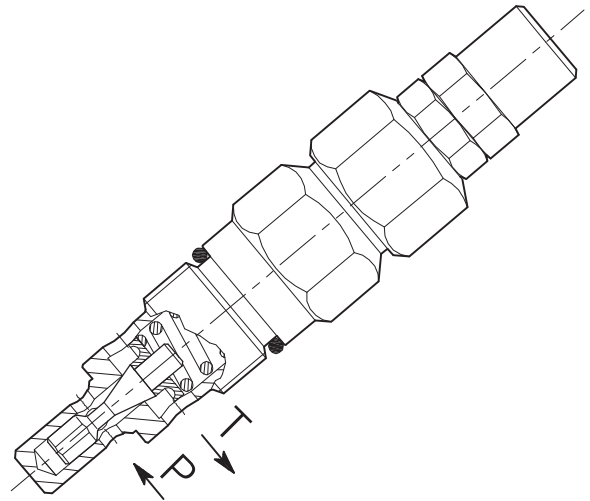
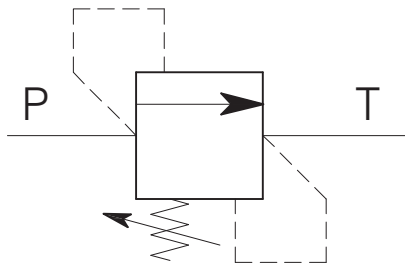


VMP-35-...

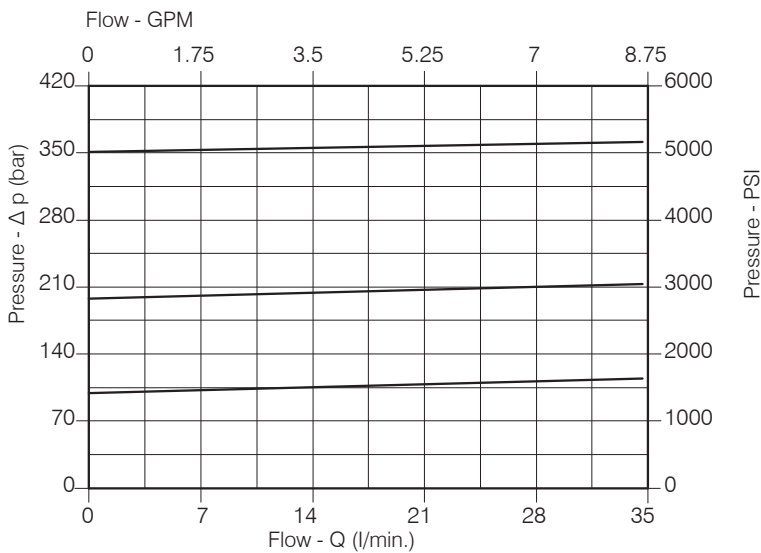
CARTRIDGE RELIEF, DIRECT ACTING POPPET TYPE VALVE



Performance

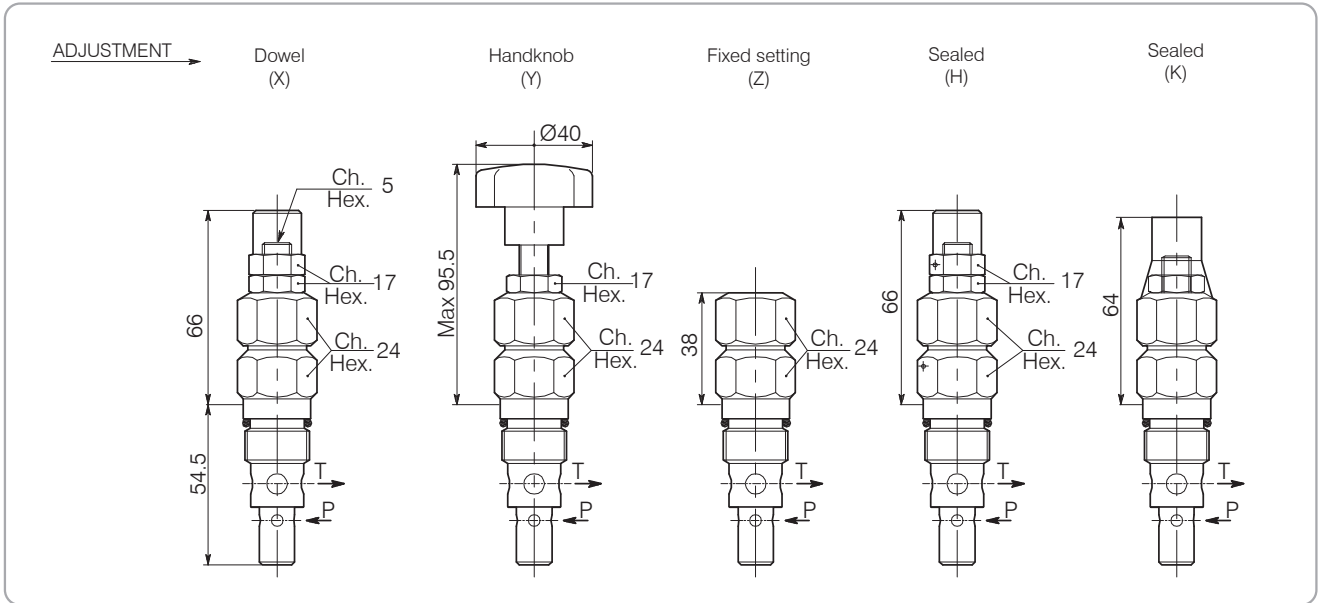
Rated size	DN 8
Min/Max flow-rate	35 l/min - 9.2 GPM
Max working pressure	350 bar - 5075 PSI
Max setting pressure	350 bar - 5075 PSI
Room temperature	-30°C + 50°C
Oil temperature	-30°C + 80°C
Recommended filtration	30÷50 micron
Tightening torque	50÷59 Nm
Weight	0.243 kg

Performance Details



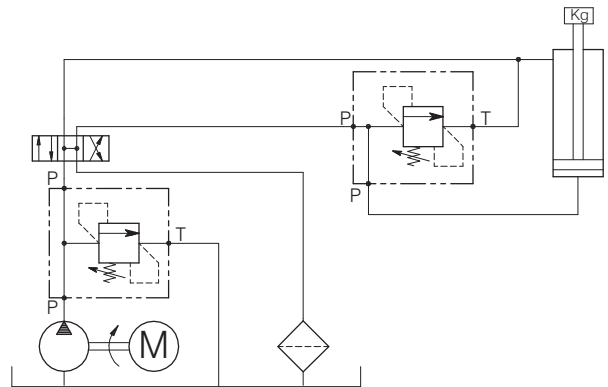
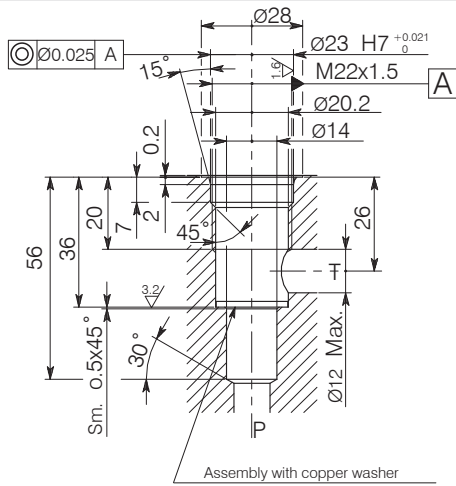
VMP-35-...

Hydraulic valves and integrated components



Cavity CER.007.L

Typical Circuit Example



The valve seat should be perfectly toolled

Ordering Code

2 . 3 . 0 . X . 0

Setting Range					
3		113		114	
Setting range 5÷100 bar (blue spring)		Setting range 10÷210 bar (green spring)		Setting range 20÷350 bar (yellow spring)	
Std. bar setting (Q=5 l/1')	Pressure rise - turn of screw	Std. bar setting (Q=5 l/1')	Pressure rise - turn of screw	Std. bar setting (Q=5 l/1')	Pressure rise - turn of screw
80 bar	(-)	180 bar	(-)	320 bar	(-)

Adjustment

- X : Dowel
- Y : Handknob
- Z : Fixed setting
- H : Sealed
- K : Sealed