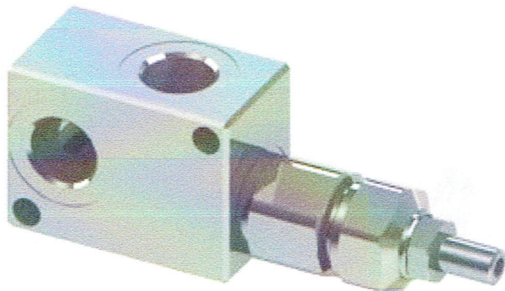


# VMDR10

## Direct acting relief valves



### Technical data

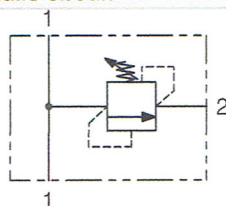
Mineral oil	ISO 6743/4 (DIN 51524)
Oil viscosity	15-250 mm <sup>2</sup> /s (15 to 250 cSt)
Max contamination index with filter	ISO 4406:1999 Classe 19/17/14
Oil temperature	-20°C +80°C -4°F + 176°F
Ambient temperature	-20°C +50°C -4°F + 122°F

It is necessary a filter use to protect the valve (advised filtration 15 μm)

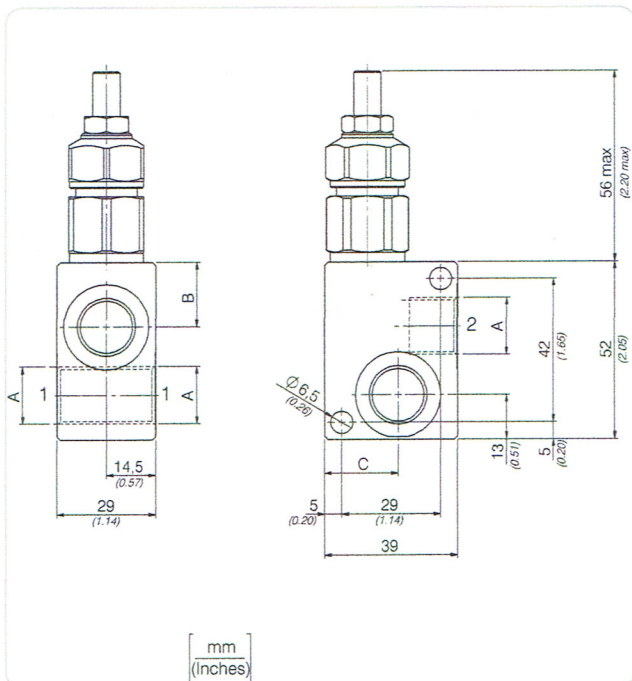
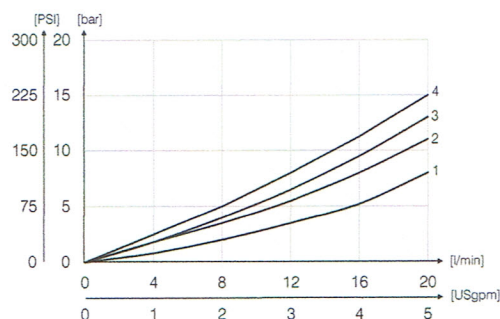
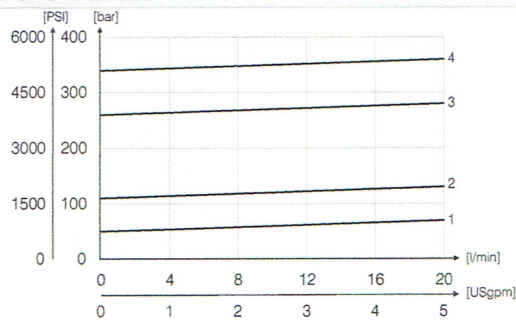
### Ordering Code

	01	02	03	04
	VMDR10			
<b>01</b>	Direct acting relief valves			VMDR10
<b>02</b>	Dimensione (Size)	BSP1/2		140
		BSP3/8		380
<b>03</b>	Setting	Screw		C
		Handknob Code 81300109		V
<b>04</b>	Spring	10/40 bar (145/580 PSI) max	Press. increase 12 bar/al giro (174 PSI/turn)	1
		20/210bar (290/1595PSI) max	Press. increase 30 bar/al giro (435 PSI/turn)	2
		30/210bar (435/3045PSI) max	Press. increase 62 bar/al giro (899 PSI/turn)	3
		40/350bar (580/5075PSI) max	Press. increase 120 bar/al giro(1740PSI/turn)	4

### Hydraulic circuit



### Performances

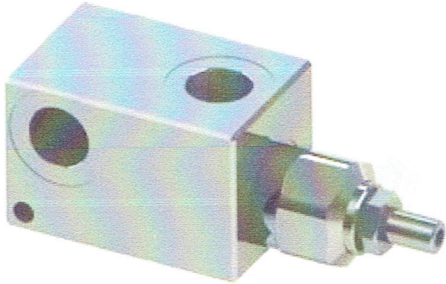


### Technical characteristics

Code	A	Portata max (l/min) Max flow (USgpm)	Pressione max (bar) Max pressure (PSI)	B	C	Approx weight (lb)
VMDR10140 (BSP1/4)		40(10.6)	350 (5075)	17 (0.79)	20 (0.79)	0,51(1.12)
VMDR10380 (BSP3/8)				19 (0.75)	18 (0.71)	0,47(1.03)

**VMDR40**

**Direct acting relief valves**



**Technical data**

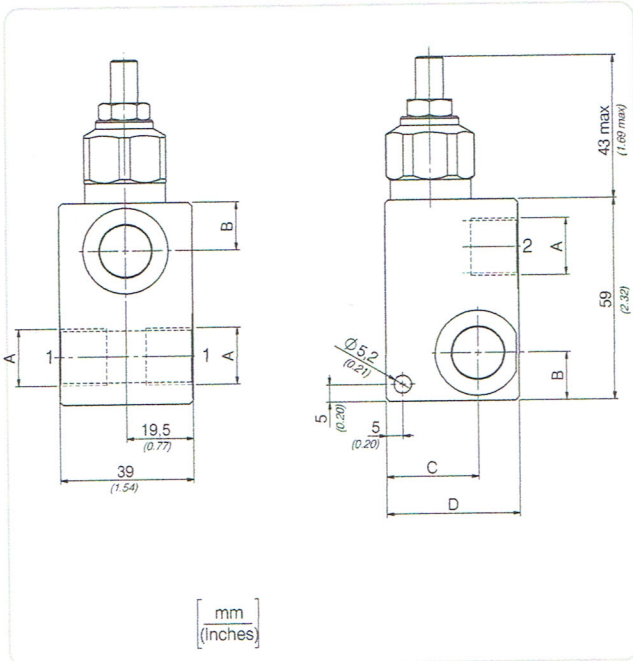
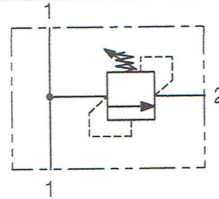
Mineral oil	ISO 6743/4 (DIN 51524)
Oil viscosity	15-250 mm <sup>2</sup> /s (15 to 250 cSt)
Max contamination index with filter	ISO 4406:1999 Classe 19/17/14
Oil temperature	-20°C +80°C -4°F + 176°F
Ambient temperature	-20°C +50°C -4°F + 122°F

It is necessary a filter use to protect the valve (advised filtration 15 µm)

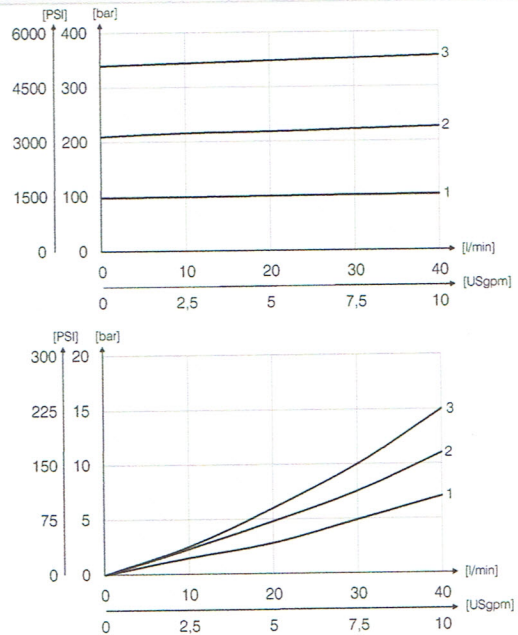
**Ordering Code**

	01	02	03	04
	VMDR40			
<b>01</b>	<b>Direct acting relief valves</b>			<b>VMDR40</b>
<b>02</b> Dimensione (Size)	BSPP3/8			<b>380</b>
	BSPP1/2			<b>120</b>
<b>03</b> Setting	Screw			<b>C</b>
	Handknob Code 81300109			<b>V</b>
	Spring 10/90 bar (145/1305 PSI) max	Press. increase 12 bar/al giro (174 PSI/turn)		<b>1</b>
<b>04</b>	Spring 20/210bar (290/1595PSI) max	Press. increase 30 bar/al giro (435 PSI/turn)		<b>2</b>
	Spring 70/350bar (1015/5075PSI) max	Press. increase 65 bar/al giro (943 PSI/turn)		<b>3</b>

**Hydraulic circuit**



**Performances**



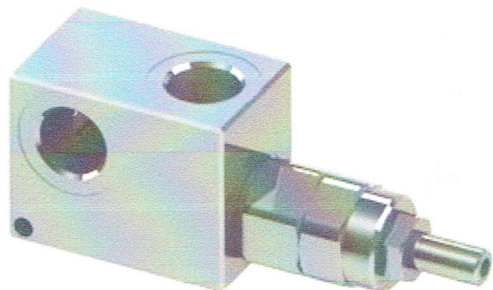
**Technical characteristics**

Code	A	Portata max (l/min) Max flow (USgpm)	Pressione max (bar) Max pressure (PSI)	B	C	D	Approx weight (lb)
VMDR1 380 (BSPP3/8)		40(10.6)	350 (5075)	14(0.55)	27(1.06)	39(1.54)	0,51(1.12)
VMDR1 120 (BSPP1/2)				15(0.59)	29,5(1.16)	45(1.77)	0,47(1.03)



# VMDR90

## Direct acting relief valves



### Technical data

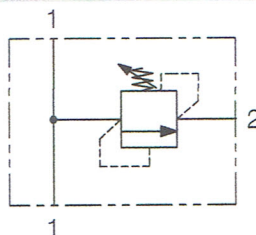
Mineral oil	ISO 6743/4 (DIN 51524)
Oil viscosity	15-250 mm <sup>2</sup> /s (15 to 250 cSt)
Max contamination index with filter	ISO 4406:1999 Classe 19/17/14
Oil temperature	-20°C +80°C -4°F + 176°F
Ambient temperature	-20°C +50°C -4°F + 122°F

It is necessary a filter use to protect the valve (advised filtration 15 μm)

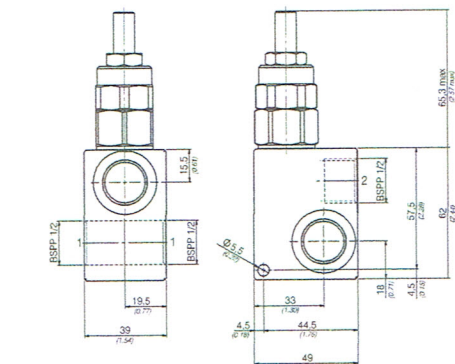
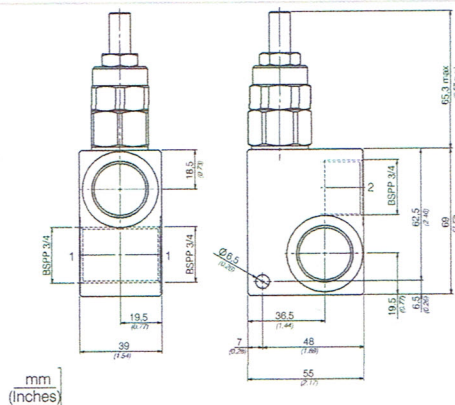
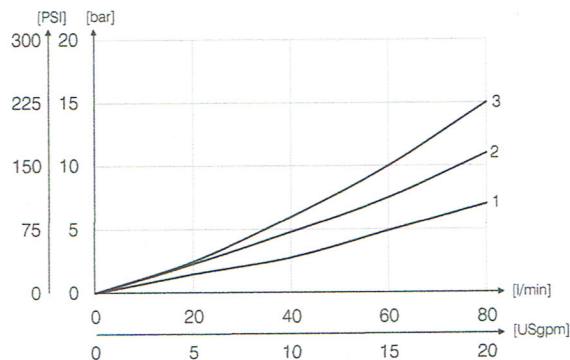
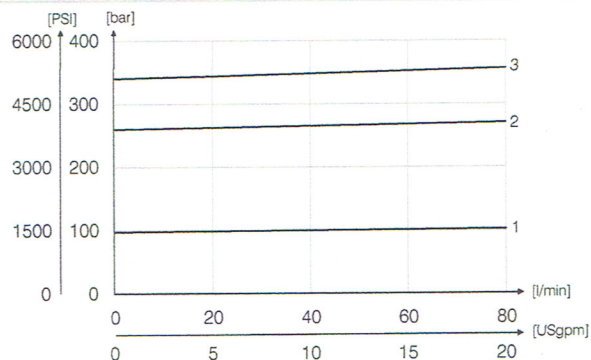
### Ordering Code

		01	02	03	04
		<b>VMDR90</b>			
<b>01</b>	<b>(Direct acting relief valves)</b>				<b>VMDR90</b>
<b>02</b>	Dimensione (Size)	BSPP1/2		120	
		BSPP3/4		340	
<b>03</b>	Setting	Screw		C	
		Cod 81300023		V	
<b>04</b>	Spring 10/100 bar (145/1450 PSI) max.	23 bar (334 PSI/turn)		1	
	Spring 20/250 bar (290/3625 PSI) max.	40 bar (580 PSI/turn)		2	
	Spring 70/350 bar (725/5075 PSI) max.	90 bar (1305 PSI/turn)		3	

### Hydraulic circuit



### Performances

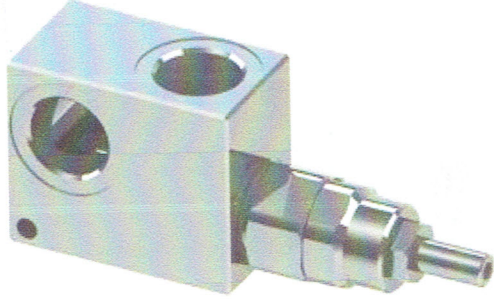


### Technical characteristics

Code	Portata max (l/min) Max flow (USgpm)	Pressione max (bar) Max pressure (PSI)	Approx weight (lb)
VMDR90120	80 (21.1)	350 (5075)	0,65(1.43)
VMDR90340	80 (21.1)	350 (5075)	1(2.2)

**VMDR120**

Direct acting relief valves



**Technical data**

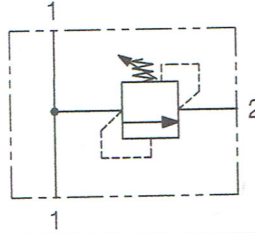
Mineral oil	ISO 6743/4 (DIN 51524)
Oil viscosity	15-250 mm <sup>2</sup> /s (15 to 250 cSt)
Max contamination index with filter	ISO 4406:1999 Classe 19/17/14
Oil temperature	-20°C +80°C -4°F + 176°F
Ambient temperature	-20°C +50°C -4°F+ 122°F

It is necessary a filter use to protect the valve (advised filtration 15 μm)

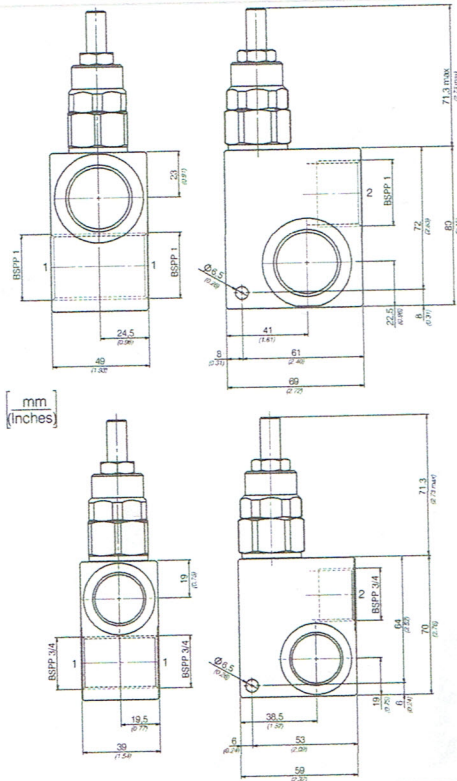
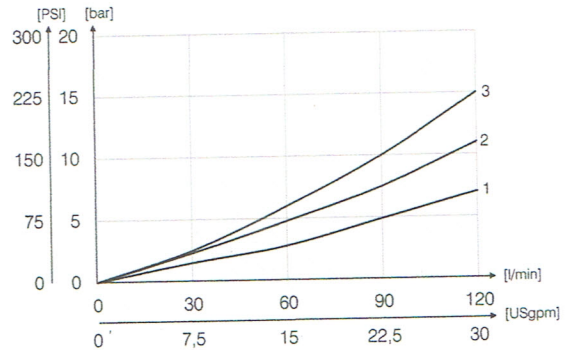
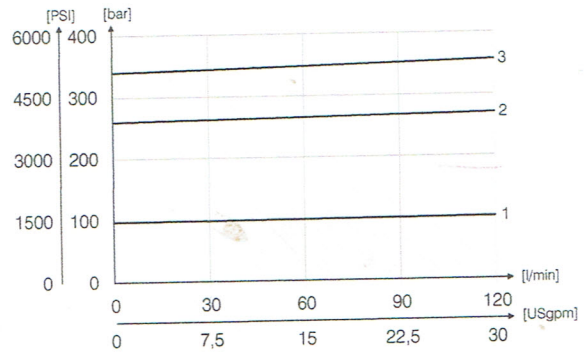
**Ordering Code**

	01	02	03	04
<b>VMDR120</b>				
<b>01</b>	<b>(Direct acting relief valves)</b>			<b>VMDR120</b>
<b>02</b>	Dimensione (Size)	BSPP3/4		<b>340</b>
		BSPP1		<b>100</b>
<b>03</b>	Setting	Screw		<b>C</b>
		Cod 81300023		<b>V</b>
<b>04</b>	Spring 10/100 bar (145/1450 PSI) max	20 bar (290 PSI/turn)		<b>1</b>
	Spring 20/250 bar (290/3625 PSI) max	45 bar (290 PSI/turn)		<b>2</b>
	Spring 70/350 bar (725/5075PSI)max	50 bar (725 PSI/turn)		<b>3</b>

**Hydraulic circuit**



**Performances**



**Technical characteristics**

Code	Portata max (l/min) Max flow (USgpm)	Pressione max (bar) Max pressure (PSI)	Approx weight (lb)
VMDR120340	120 (31.7)	350 (5075)	1,1(2.42)
VMDR120100			1,7(3.74)