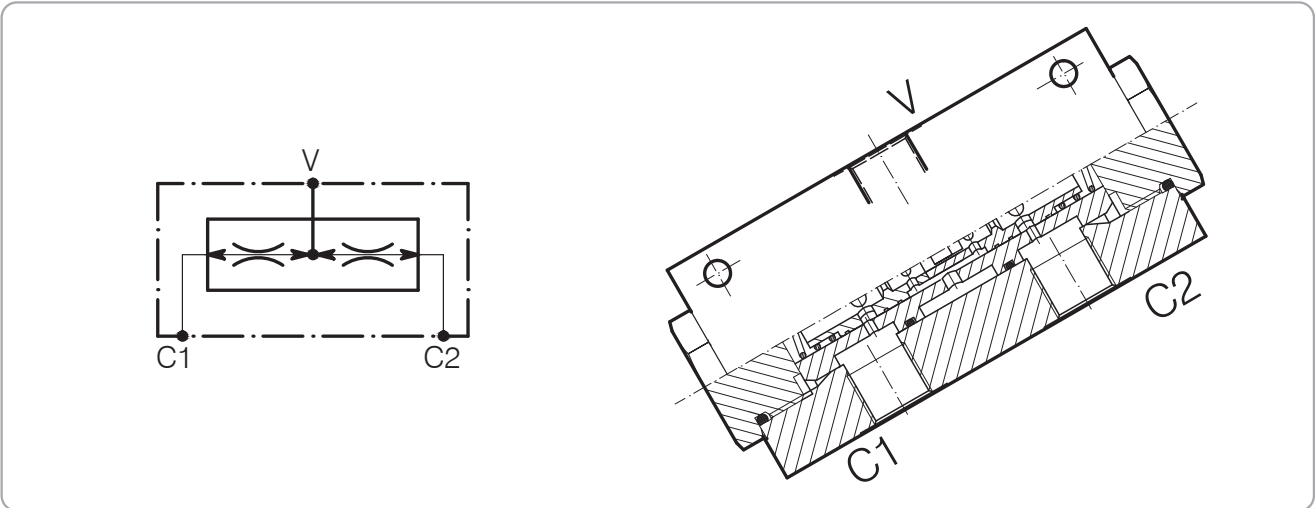


VDF-...-...

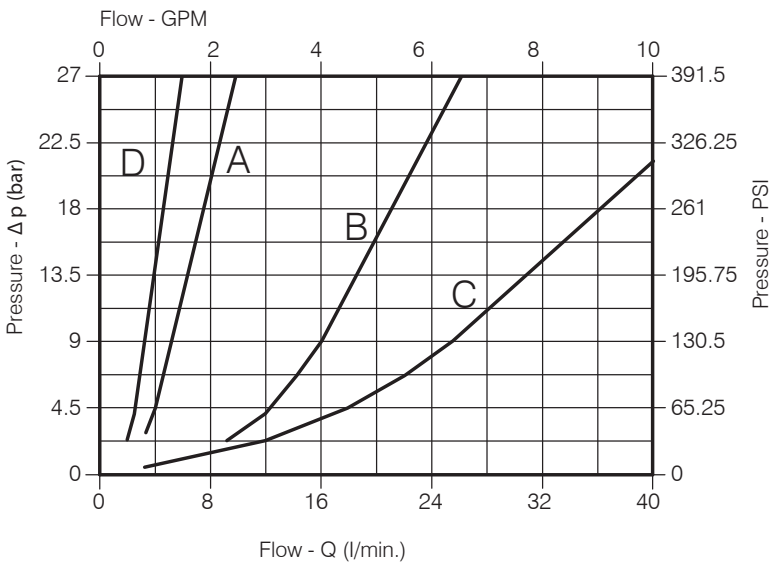
FLOW DIVIDER/COMBINER



Performance

Flow division ratio	50%
Min/max flow-rate	Vedi pag. 12
Max working pressure	210 bar - 3075 PSI
Room temperature	-30°C + 50°C
Oil temperature	-30°C + 80°C
Recommended filtration	50 micron
Weight	0.869 Kg. 3/8" GAS
Weight	0.850 Kg. 1/2" GAS

Performance Details

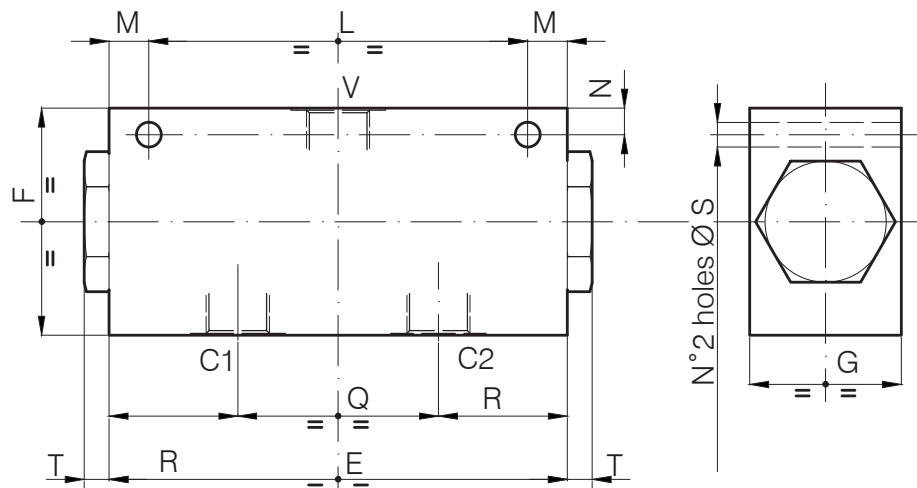


VDF — 38
VDF — 12

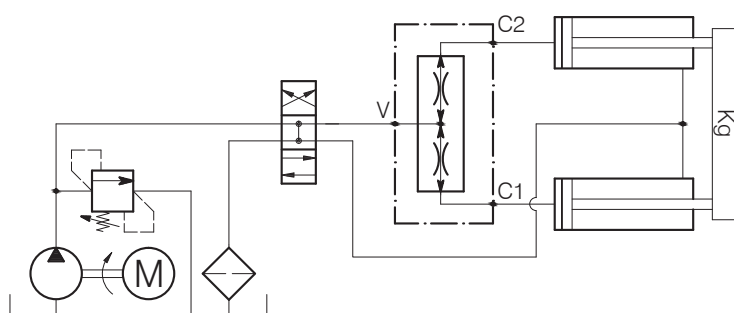
Oil viscosity 46 cSt at 50°C

VDF-...-...

Hydraulic valves and integrated components



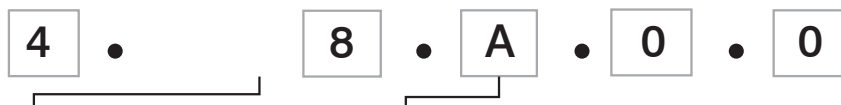
TYPICAL CIRCUIT EXAMPLE



Dimensions

Valve Number	E	F	G	L	M	N	Q	R	S	T	Port size V GAS (BSPP)	Port size C1-C2 GAS (BSPP)
008	121	60	40	100	10.5	7	53	34	6.5	7	3/8"	3/8"
009	121	60	40	100	10.5	7	53	34	6.5	7	1/2"	3/8"

Ordering Code

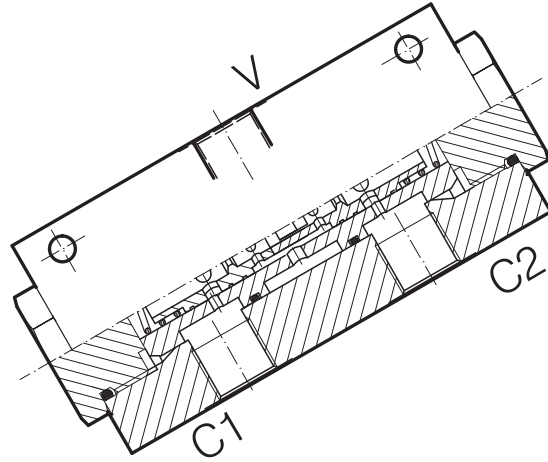
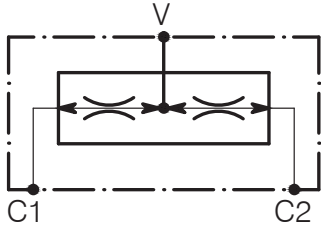


Valve Number
8
9

Recommended flow rate	
A	da 6.5 a 11
B	da 13 a 22
C	da 25 a 38
D	da 2 a 6

VDF-...-...

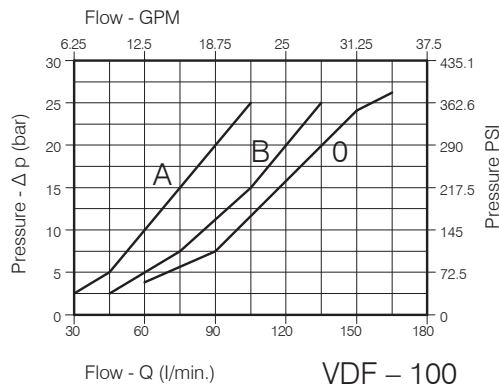
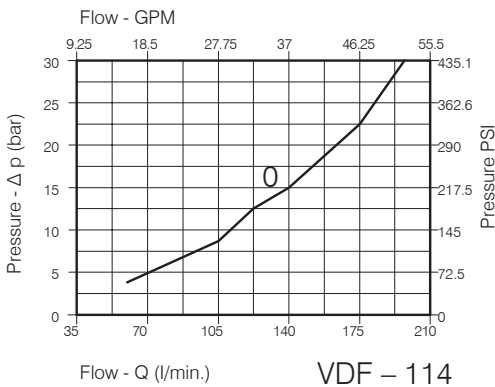
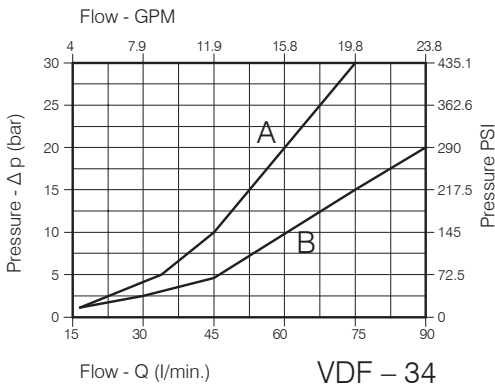
FLOW DIVIDER/COMBINER



Performance

Flow division ratio	50%
Min/max flow-rate	Vedi pag. 02
Max working pressure	210 bar - 3075 PSI
Room temperature	-30°C + 50°C
Oil temperature	-30°C + 80°C
Recommended filtration	50 micron

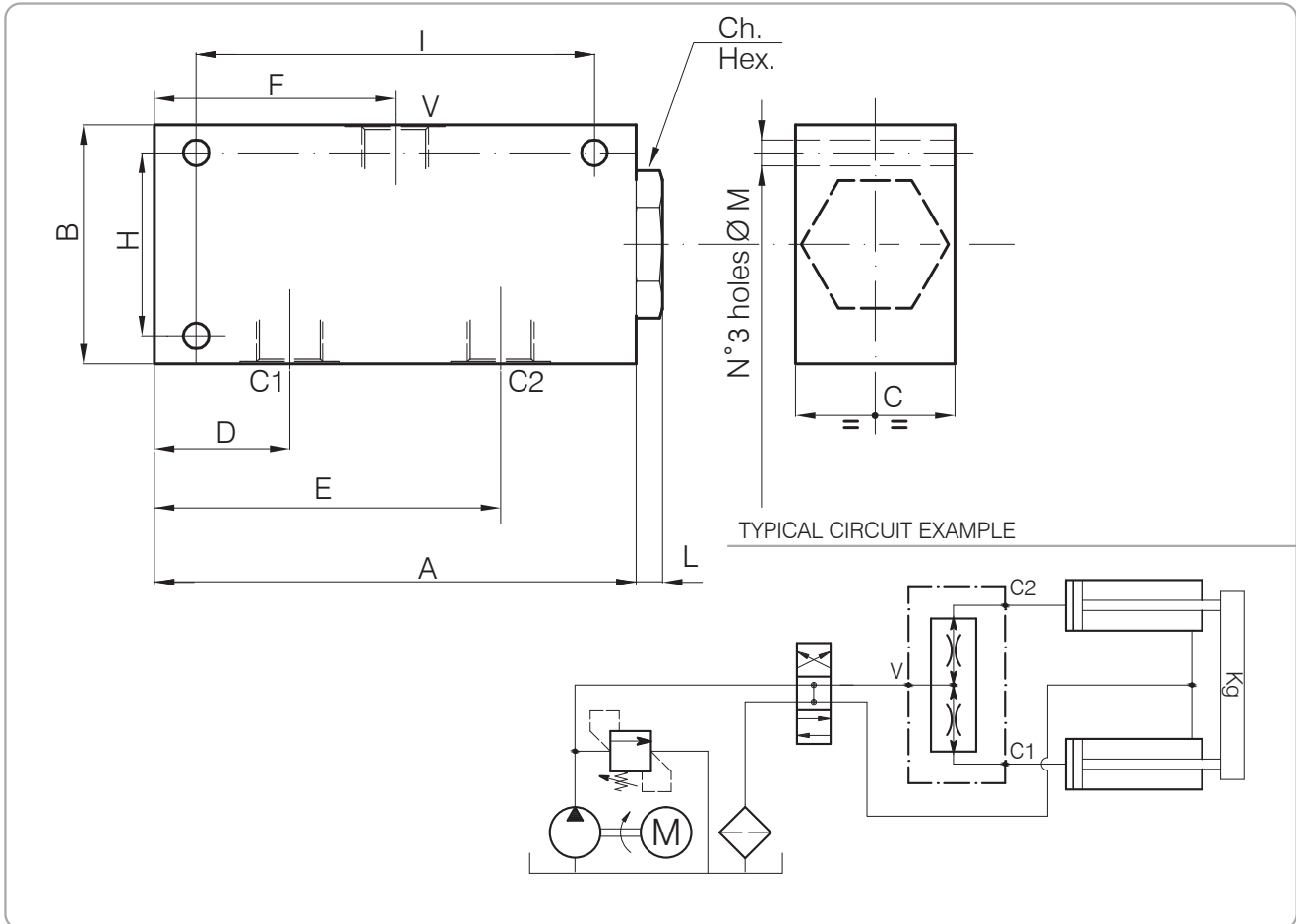
Performance Details



Oil viscosity 46 cSt at 50°C

VDF-...-...

Hydraulic valves and integrated components



Dimensions

Valve Number	A	B	C	D	E	F	H	I	L	M	CH hex	Port size V GAS (BSPP)	Port size C1-C2 GAS (BSPP)
56	120	80	40	42	90	66	60	102	9.5	6.5	32	3/4"	1/2"
59	120	100	50	37	95	66	82	102	12	8.5	38	1"	3/4"
58	120	120	60	37	95	66	82	102	12	8.5	38	1-1/4"	1"

Ordering Code



Valve Number
56
59
58

VDF-34	
Recommended inlet flow rate l/min	
A	da 15 a 60
B	da 15 a 90

VDF-100	
Recommended inlet flow rate l/min	
A	da 30 a 100
B	da 45 a 128
O	da 60 a 167

VDF-114	
Recommended inlet flow rate l/min	
O	da 60 a 200