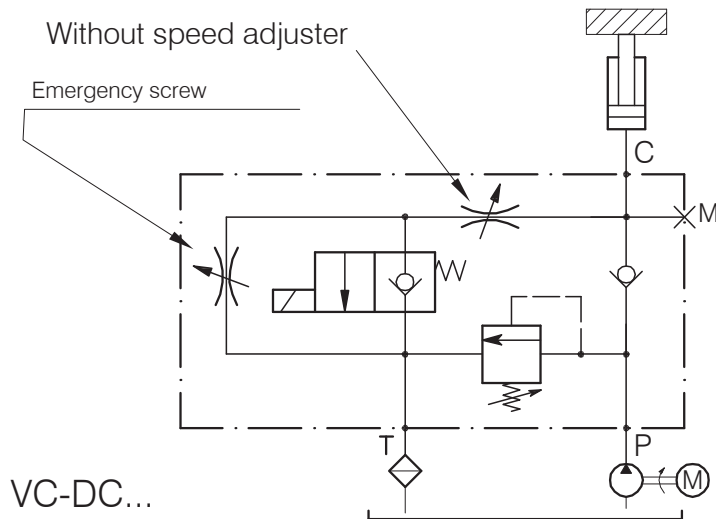


**VD-DC-...-C-VMP-20**

**INTEGRATED BLOCKS DESIGNED TO CONTROL SINGLE ACTING CYLINDER**



**Performance**

Min/max rated size	...
Max flow-rate	20/40 l/min - 5.2/10.5 GPM
Max working pressure	350 bar - 5075 PSI
Max setting pressure	...
Room temperature	-30°C + 50°C
Oil temperature	-30°C + 80°C
Recommended filtration	25 micron
Tightening torque	... Nm
Weight	... Kg

**DESCRIPTION:**

Compact integrated blocks with aluminium body. All the cartridges have unified cavity for an easy interchange and maintenance.

**OPERATION:**

Starting the electric motor will produce the lifting of the load. When the motor is turned off and the solenoid is de-energized, the unit grants a perfect load retention. Energising the solenoid or manually tripping the emergency control of the same will cause the descent of the load at the adjusted speed.

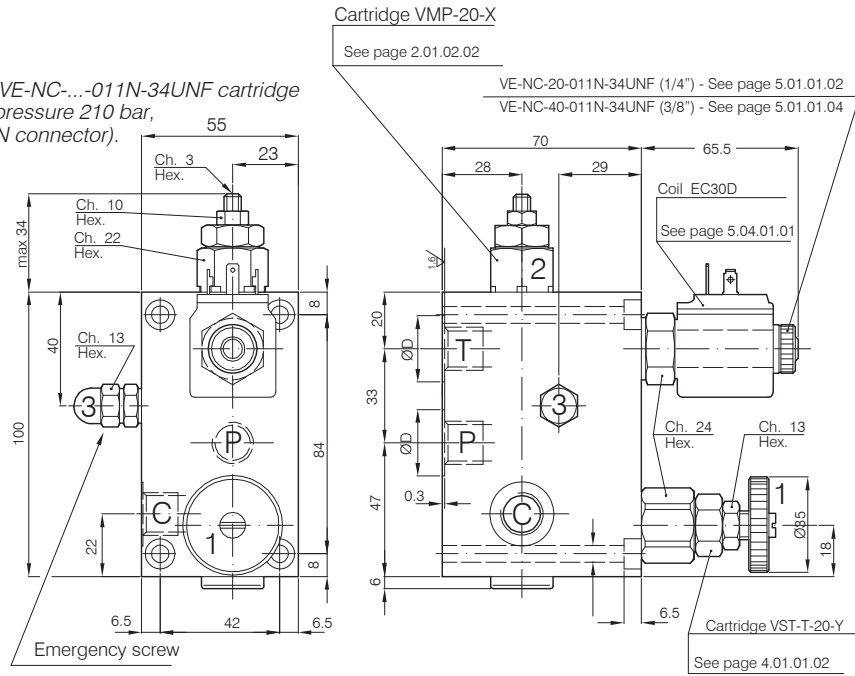
**NOTE:**

The valves are supplied by default with a bi-directional flow restrictor. On request this can be replaced with a compensated flow restrictor for a constant speed descent, independent of the load.

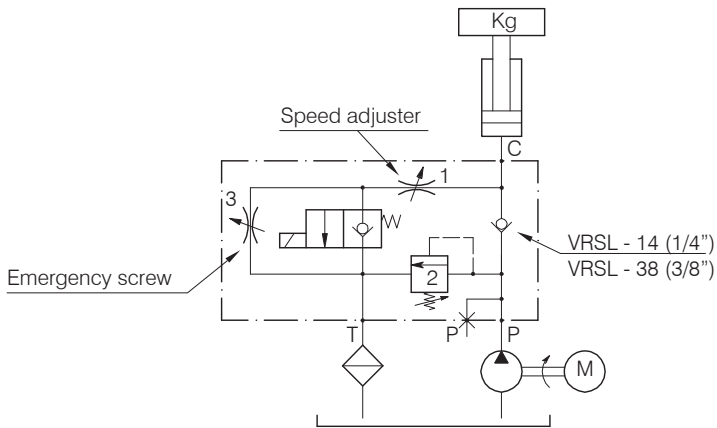
**VD-DC-...-C-VMP-20**

Hydraulic valves and integrated components

Standard supply with a VE-NC-...-011N-34UNF cartridge and EC30D coils (max pressure 210 bar, AC 28 VA, DC 18 W, DIN connector).



**TYPICAL CIRCUIT EXAMPLE**



**Ordering Code**

ORDERING CODE	Std. bar setting (mode at 5 1/1") 350 bar	Pressure rise - turn of screw (...)	Port Size C-P-T GAS (BSPP)	Diameter ØD	Rated sized DN	Max flow - rate l/min-GPM
	Setting range (bar) (yellow spring)					
5.078.000	30 ÷ 350		1/4"	22	6	20-5
5.082.000	30 ÷ 350		3/8"	25	6	40-10