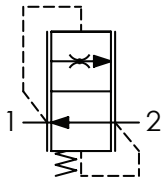


VCC380 SABİT AKIŞ KONTROL VANALARI - BASINÇ KOMPANZASYONLU

VCC380 SERIES



Control Port(s)



Ordering Code

1	2
VCC380	

01	(Fixed flow control valves - pressure compensated)	VCC140
02	Controlled flow at 100 bar ± 10 %	1 l/min (0.26 USgpm) 1
		2 l/min (0.53 USgpm) 2
		3 l/min (0.79 USgpm) 3
		4 l/min (1.06 USgpm) 4
		5 l/min (1.32 USgpm) 5
		6 l/min (1.58 USgpm) 6
		7 l/min (1.85 USgpm) 7
		8 l/min (2.11 USgpm) 8
		9 l/min (2.38 USgpm) 9
		10 l/min (2.64 USgpm) 10
		11 l/min (2.90 USgpm) 11
		12 l/min (3.17 USgpm) 12

Speciality

Mineral oil	ISO 6743/4
Oil viscosity	15-250 mm ² /s
Max contamination index with filter	ISO 4406:1999
Oil temperature	-20°C +80°C
Ambient temperature	-20°C +50°C
It is necessary a filter use to protect the valve (advised filtration 15 μm)	

Performance

Type 61100162

(Approx weight)
0,12 kg (0.26 lb)

Type 61100161

(Approx weight)
0,12 kg (0.26 lb)

Type	Max flow l/min - USgpm	Max pressure bar / PSI	Tightening torque Nm-ibf-ft	Approx weight kg-lb
VCC380	18 (4.8)	250(3625)	6 (4.5)	0,024(0.053)

Dimensions

(Cavity)

[mm
(Inches)]

(Type)	Ø C
VCC3801	0,6 (0.02)
VCC3802	1,4 (0.06)
VCC3803	1,7 (0.07)
VCC3804	2 (0.08)
VCC3805	2,3 (0.09)
VCC3806	2,6 (0.10)
VCC3807	2,8 (0.11)
VCC3808	3,1 (0.12)
VCC3809	3,3 (0.13)
VCC38010	3,5 (0.14)
VCC38011	3,7 (0.15)
VCC38012	4 (0.16)
VCC38016	5 (0.12)
VCC38018	5,5 (0.22)