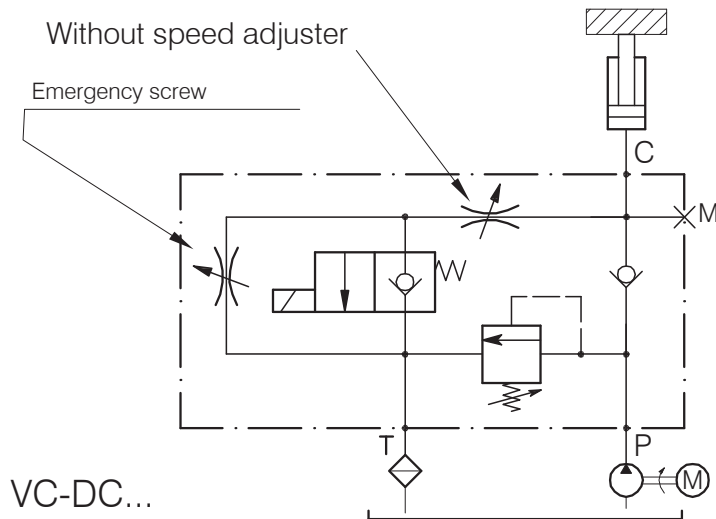


VC-DC-...-C-VMP-20

INTEGRATED BLOCKS DESIGNED TO CONTROL SINGLE ACTING CYLINDER



Performance

Min/max rated size	...
Max flow-rate	40 l/min - 10.5 GPM
Max working pressure	350 bar - 5075 PSI
Max setting pressure	...
Room temperature	-30°C + 50°C
Oil temperature	-30°C + 80°C
Recommended filtration	25 micron
Tightening torque	... Nm
Weight	... Kg

DESCRIPTION:

Compact integrated blocks with aluminium body. All the cartridges have unified cavity for an easy interchange and maintenance.

OPERATION:

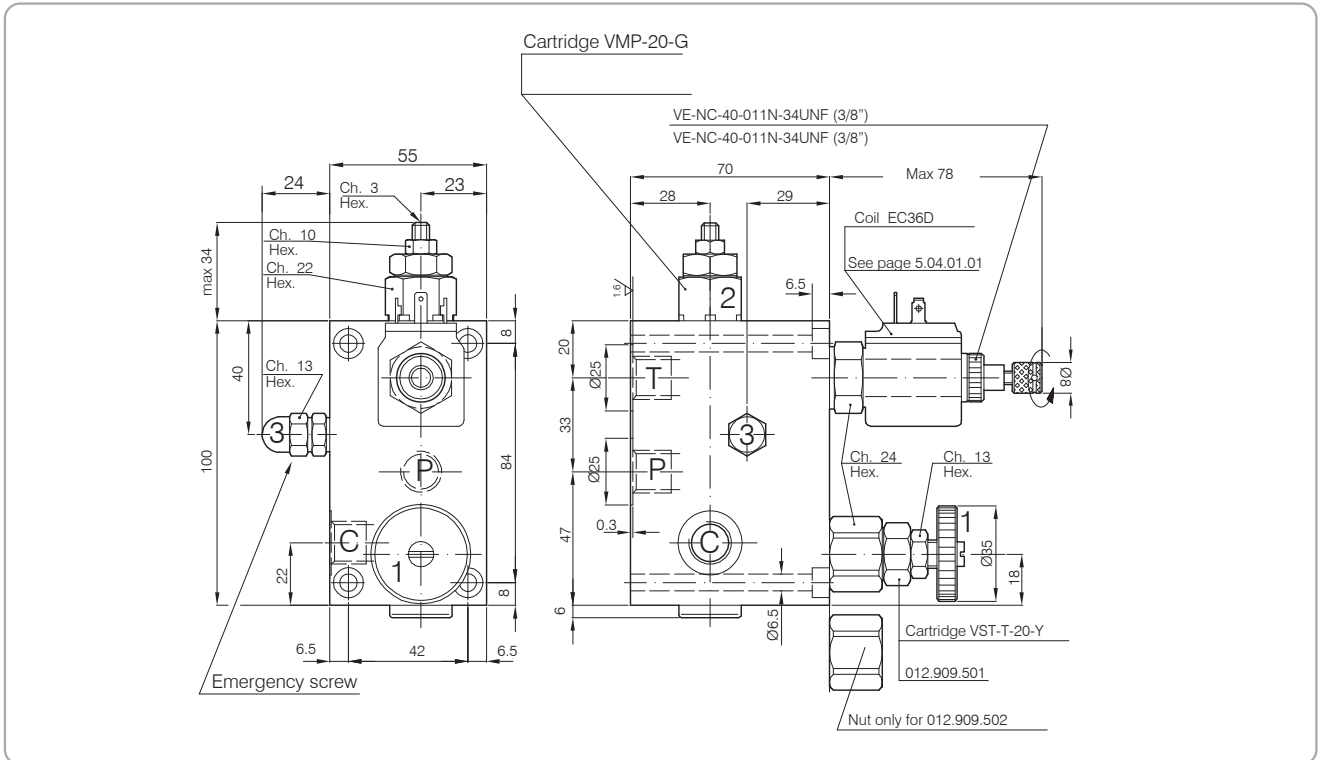
Starting the electric motor will produce the lifting of the load. When the motor is turned off and the solenoid is de-energized, the unit grants a perfect load retention. Energising the solenoid or manually tripping the emergency control of the same will cause the descent of the load at the adjusted speed.

NOTE:

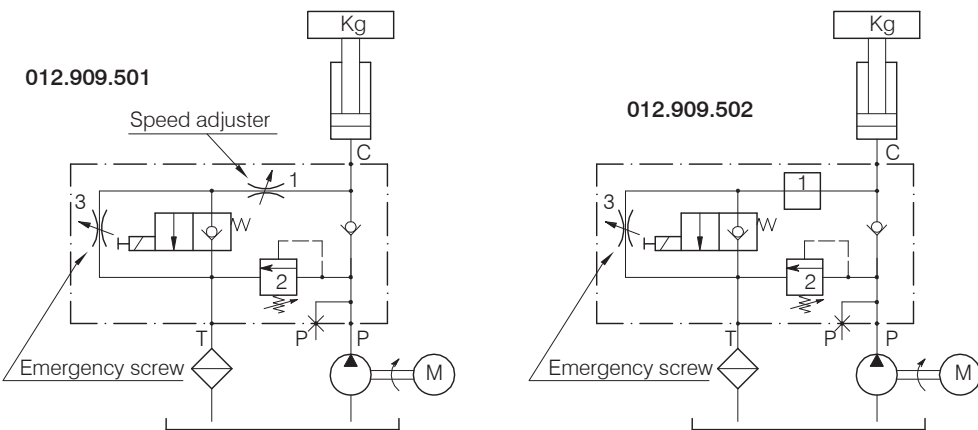
The valves are supplied by default with a bi-directional flow restrictor. On request this can be replaced with a compensated flow restrictor for a constant speed descent, independent of the load.

VC-DC-...-C-VMP-20

Hydraulic valves and integrated components



TYPICAL CIRCUIT EXAMPLE



Ordering Code

ORDERING CODE	Std. bar setting (mode at 5 1/1") 350 bar	Pressure rise - turn of screw (...)	Port Size C-P-T GAS (BSPP)	Rated sized DN	Max flow - rate l/min-GPM
	Setting range (bar) (yellow spring)				
12.909.501	30 ÷ 350		3/8"	6	40-10
12.909.502	30 ÷ 350		3/8"	6	40-10