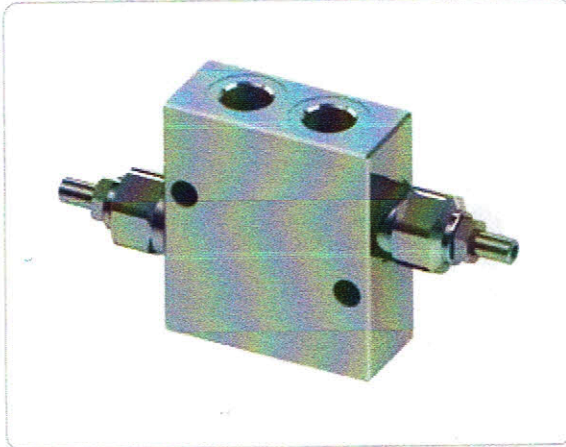


VBDC

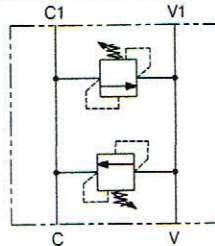
Double cross line direct acting relief valves



Ordering Code

01			02			03		
VBDC								
01	(Double cross line direct acting relief valves)						VBDC	
02	Dimensione (Size)	BSP3/8		380				
		BSP1/2		120				
03	Spring 10/90 bar (145/1305 PSI) max		12 bar (174 PSI/turn)			1		
	Spring 20/210 bar (290/3045 PSI) max		30 bar (435 PSI/turn)			2		
	Spring 70/350 bar (1015/5075 PSI) max		65 bar (943 PSI/turn)			3		

Hydraulic circuit

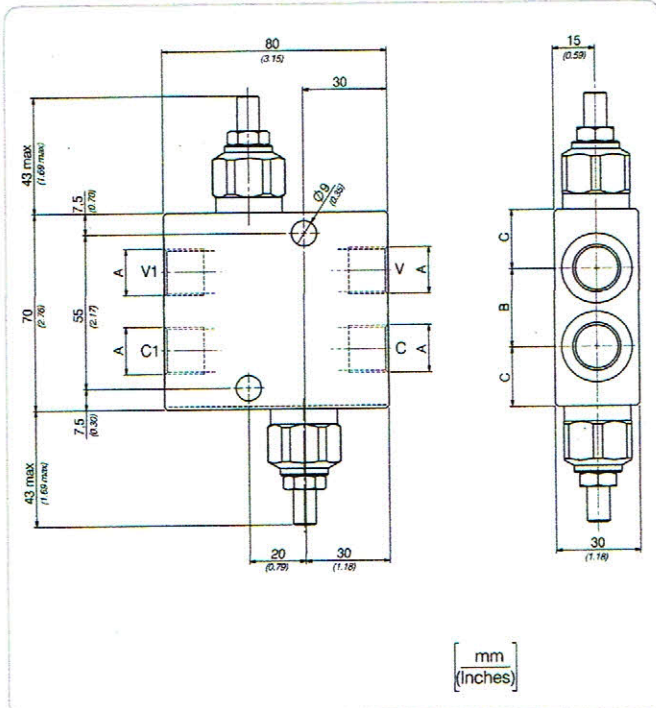
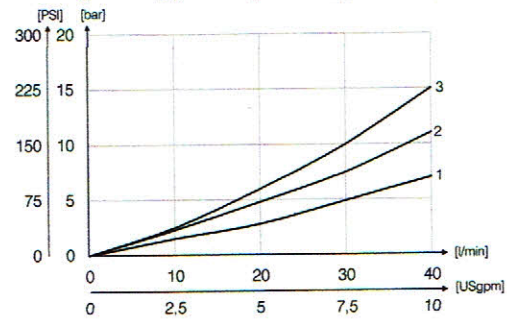
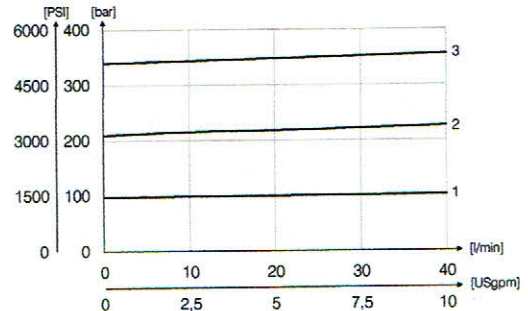


Technical data

Mineral oil	ISO 6743/4 (DIN 51524)
Oil viscosity	15-250 mm ² /s (15 to 250 cSt)
Max contamination index with filter	ISO 4406:1999 Classe 19/17/14
Oil temperature	-20°C +80°C -4°F + 176°F
Ambient temperature	-20°C +50°C -4°F + 122°F

It is necessary a filter use to protect the valve (advised filtration 15 μm)

Performances



Technical characteristics

Code	A	Portata max (l/min) Max flow (USgpm)	Pressione max (bar) Max pressure (PSI)	B	C	Approx weight (lb)	Type of valve
VBDC380	BSP3/8	40 (10.6)	350 (5075)	28 (1.10)	21 (0.83)	0,84 (2.60)	VMD40S
VBDC120	BSP1/2			33 (1.30)	18,5 (0.73)	1,12 (2.47)	