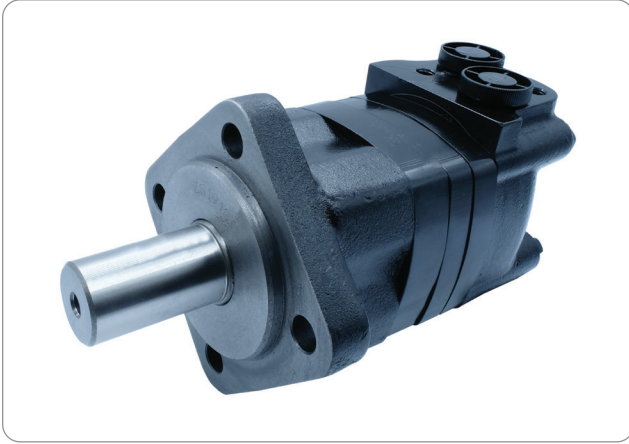


WINMAN V51 Serisi / V51 Series

Karakteristik Özellikler / Characteristic Features

- V51 motor is a disc valve type gerolor motor.
- Advanced design in disc distribution flow, which can provide improved performance at low speed.
- Advanced design of shaft seal, which can bear higher pressure.
- Advanced distribution mechanism design, which has the automatic compensation function.
- Double-rolling bearing design, which permit higher radial loads.
- A variety of connection types of flange, output shaft and oil port.

Ana Özellikler / Main Specification

(ml/r) Displacement		80	100	125	160	200	250	305	400	500
(LPM) Flow	Cont.	75	75	75	75	75	75	75	75	75
	Int..	85	95	95	115	115	115	115	130	130
(RPM) Flow	Cont.	850	675	552	430	345	287	231	178	142
	Int..	956	855	700	660	529	423	347	308	246
(MPa) Pressure	Cont.	17.5	17.5	17.5	17.5	17.5	17.5	15	15	12
	Int..	28	28	28	25	25	25	21	17.5	15
(N*m) Torque	Cont.	178	223	278	356	445	557	580	715	720
	Int..	285	356	445	509	636	755	763	640	860

1. Intermittent means the entrance of the maximum pressure; continuous working pressure means the differential pressure.
2. Motor should not work under the highest pressure and the maximum speed.
3. The running time should not exceed 10% under intermittent working conditions
4. Recommending N68 anti-wear hydraulic oil, viscosity 37-73cSt, cleanliness ISO 18/13.
5. The Maximum working temperature is 80°.
6. One hour running time under 40% of maximum working pressure is recommended before full capacity working.
7. The maximum allowable back pressure is 10MPa, but the recommended back pressure should not exceed 5MPa. a leaking pipes is needed when exceeding.

WINMAN V51 Performans Verisi / V51 Performance Data

V51-80 80ml/r

ΔP (MPa)

	3.5	7	10	14	17	21	24	28	
Flow (L/min)	4	35 46	75 42	103 38	145 35	176 30	208 23	220 14	245 2
	8	35 97	75 90	105 86	152 83	180 78	216 69	236 60	257 49
	16	35 195	75 187	105 182	150 178	186 170	217 162	249 148	265 132
	24	35 284	75 280	105 270	152 263	188 258	222 245	256 232	289 210
	32	35 388	75 380	103 371	155 360	190 359	230 345	265 328	
	45	30 538	70 535	101 530	149 518	186 510	228 482	262 470	
	60	30 720	70 716	97 710	147 679	183 670	229 635		
	75	25 899	65 878	95 860	146 856	179 842	221 801		
	85	22 956	60 948	90 926	140 905				

V51-100 100ml/r

ΔP (MPa)

	3.5	7	10	14	17	21	24	28	
Flow (L/min)	4	45 33	89 32	130 30	175 24	208 16	246 6		
	8	35 97	75 90	105 86	152 83	180 78	251 38	278 30	
	16	46 152	93 150	140 146	185 140	220 128	269 112	295 99	318 82
	24	46 230	93 225	140 218	188 212	231 201	270 176	305 172	356 150
	32	42 315	93 310	142 300	186 290	233 278	278 240	310 238	372 225
	45	40 440	90 435	141 426	190 410	228 400	285 368	340 355	389 340
	60	35 590	90 582	138 570	185 560	230 538	290 510	330 490	
	75	35 725	85 716	136 702	178 678	228 660	280 641	315 622	
	85	32 820	80 815	130 805	176 792	225 778	275 759		
	95	24 920	75 918	122 901	169 887				

V51-125 125ml/r

ΔP (MPa)

	3.5	7	10	14	17	21	24	28	
Flow (L/min)	4	55 29	115 25	172 21	221 17	280 14	325 10	360 4	
	8	57 61	115 58	172 52	221 46	285 42	326 40	362 31	412 25
	16	56 124	116 120	174 116	235 110	295 106	345 99	379 93	446 83
	24	58 185	118 183	180 176	238 166	302 154	352 149	402 140	486 126
	32	55 246	120 240	180 235	240 230	312 222	361 218	408 210	508 200
	45	50 356	115 340	175 335	236 330	310 321	360 311	406 298	502 286
	60	45 460	113 455	173 450	240 448	300 445	360 440	420 438	470 436
	75	42 560	110 558	170 555	230 552	290 550	345 548	410 545	
	85		105 640	160 635	230 630	300 628	355 625		
	95		90 727	155 725	220 723	285 720			

V51-160 160ml/r

ΔP (MPa)

	3.5	7	10	14	17	21	24	
Flow (L/min)	4	65 23	131 20	191 19	260 13	318 9	384 3	428 2
	8	70 47	135 45	196 42	265 36	335 36	404 34	460 28
	16	70 98	140 95	208 91	286 85	360 83	440 78	502 50
	24	74 145	145 142	216 139	293 128	372 125	450 116	521 107
	32	74 198	150 196	220 191	300 180	373 182	459 175	
	45	70 282	150 279	221 276	305 265	380 254	458 240	
	60	65 370	145 368	210 365	300 362	375 360	455 355	
	75	60 459	135 456	205 453	300 451			
	85		130 518	200 516				
	95		128 578	200 575				
115		120 680						

WINAMN V51 Performans Verisi / V51 Performance Data

V51-200 200ml/r

		ΔP (MPa)						
		3.5	7	10	14	17	21	24
Flow (L/min)	4	79 16	160 14	198 12	305 7	370 5	440 2	
	8	86 37	165 35	245 34	325 27	420 24	522 20	570 13
	16	90 78	175 76	256 75	345 68	438 66	523 60	596 53
	24	91 116	180 114	268 113	360 105	448 103	542 98	610 90
	32	91 160	185 156	270 154	371 150	460 146	550 136	620 130
	45	91 226	186 222	280 219	376 215	466 209	550 202	
	60	80 304	186 300	271 293	375 286	465 280	550 272	
	75	75 382	176 376	268 370	370 361	460 350		
	85	68 425	168 420	260 412	360 408			
	95	60 482	160 476	256 470	355 459			
	115	44 578	145 570	235 564				

V51-250 250ml/r

		ΔP (MPa)							
		3.5	7	10	14	17	21	24	28
Flow (L/min)	4	105 13	210 11	312 10	410 6	524 4	630 3		
	8	109 29	215 27	320 25	425 21	545 19	650 15	740 12	
	16	115 63	225 57	336 57	450 52	595 51	676 49	765 46	
	24	115 94	230 90	342 87	465 81	580 77	690 72	780 66	
	32	115 129	235 125	356 121	475 115	600 112	706 105		
	45	110 183	235 180	356 176	480 170	600 165			
	60	95 240	230 236	350 234	470 230	580 220			
	75	90 303	215 300	336 296	465 290				
	85	80 340	210 336	325 330	455 320				
	95	75 385	200 378	320 375					
	115	60 463	185 458						

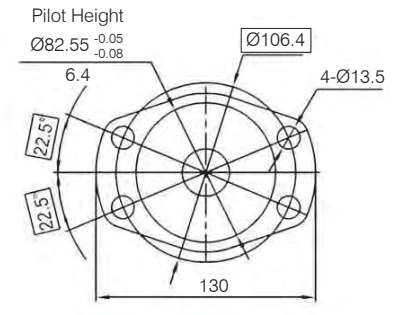
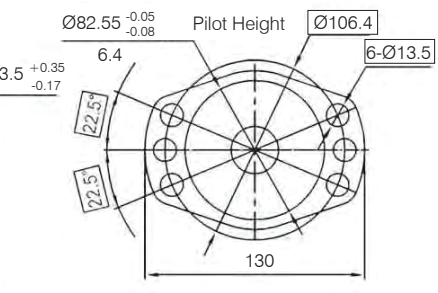
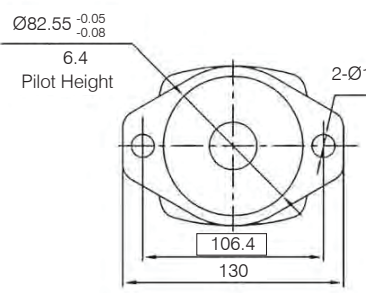
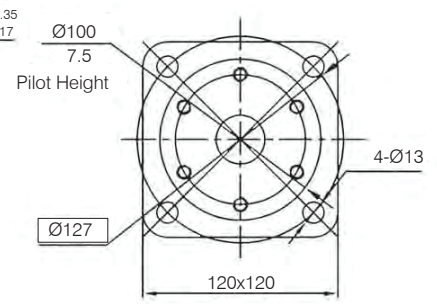
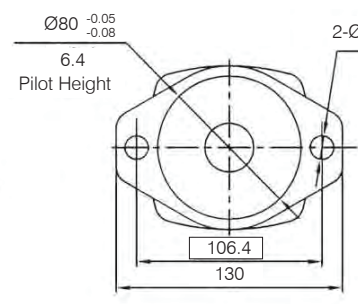
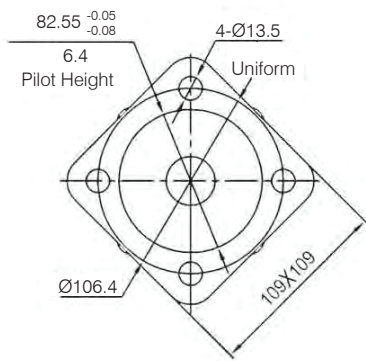
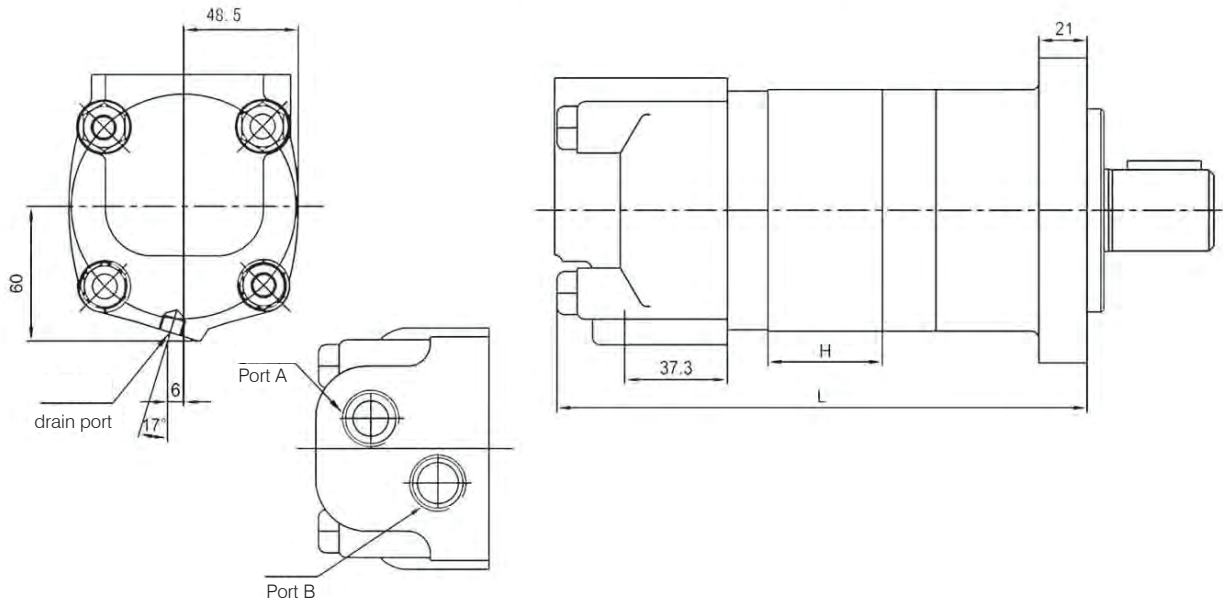
V51-305 305ml/r

		ΔP (MPa)					
		3.5	7	10	14	17	21
Flow (L/min)	4	135 12	260 10	286 9	500 6	610 1	
	8	135 25	270 23	390 21	520 19	640 15	768 11
	16	140 52	280 50	410 48	545 44	675 40	815 34
	24	145 77	290 75	420 72	560 66	700 60	732 56
	32	145 104	295 102	428 100	575 91	710 85	
	45	140 147	295 144	425 142	580 133	720 124	
	60	125 195	281 190	423 185	570 176		
	75	110 243	265 236	408 232	560 220		
	85	104 275	258 271	382 265			
	95	95 307	250 300	359 296			
	115	75 366	228 361				

BM5-400 400ml/r

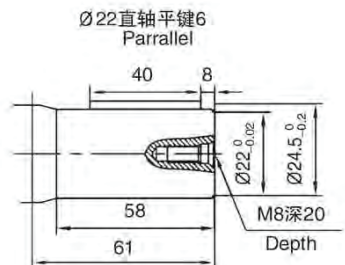
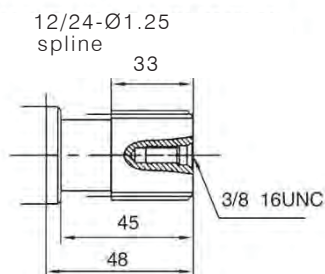
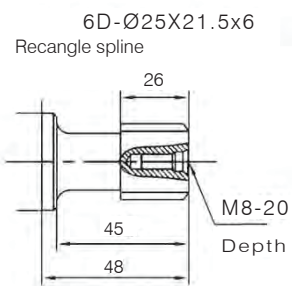
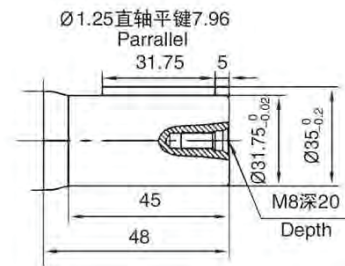
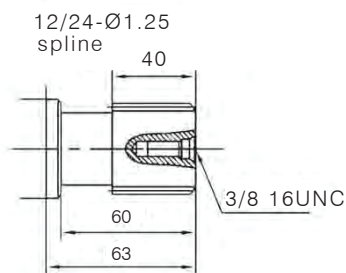
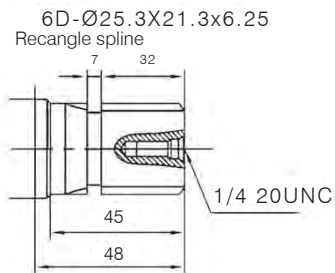
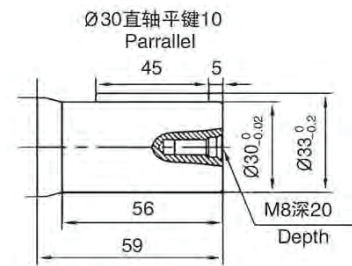
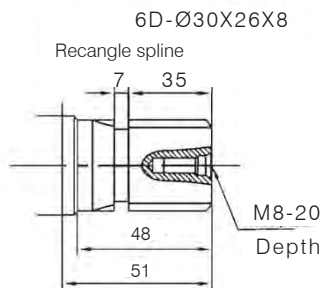
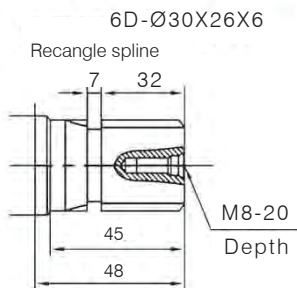
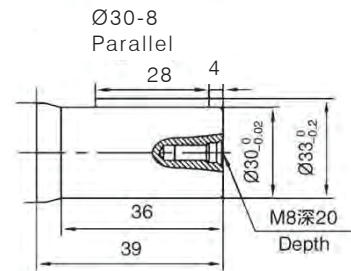
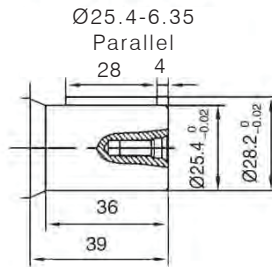
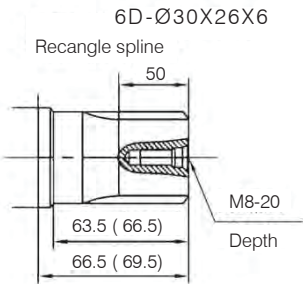
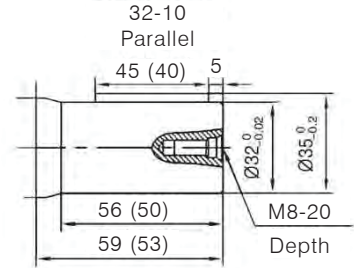
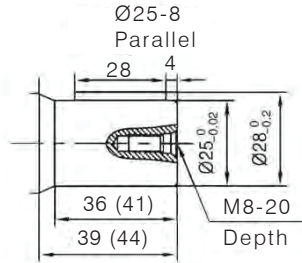
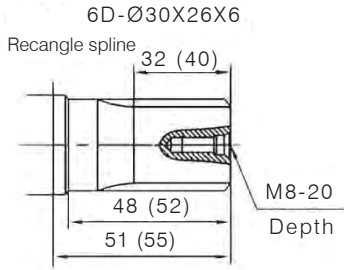
		ΔP (MPa)					
		3.5	7	10	14	17	
Flow (L/min)	4	175 9	350 8	496 7	665 6	820 4	
	8	180 19	360 18	510 17	695 14	830 11	
	16	190 39	375 37	542 36	730 34	866 29	
	24	190 58	385 56	550 54	750 50	880 46	
	32	190 80	390 78	560 74	765 70		
	45	190 113	390 112	560 108	755 102		
	60	180 150	380 148	542 144			
	75	165 188	370 186	532 180			
	85	154 211	358 210	522 208			
	95	140 238	340 236				
	115	120 288					

WINMAN V51 Boyutlar ve Montaj Verileri / V51 Dimensions and Mounting Data

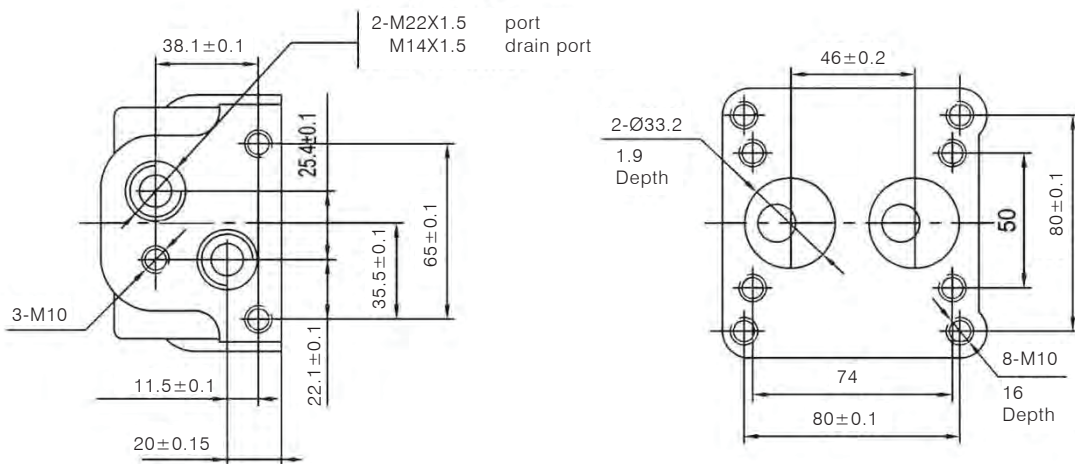
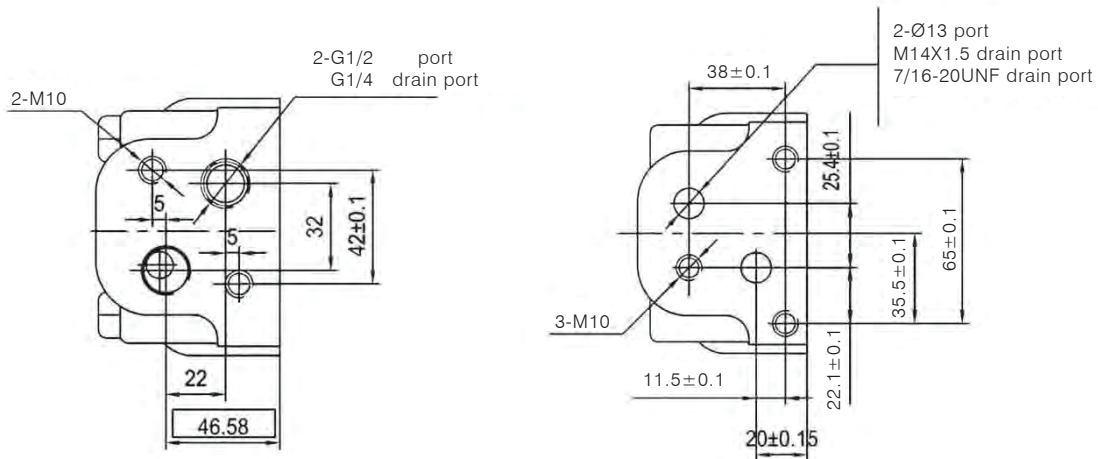
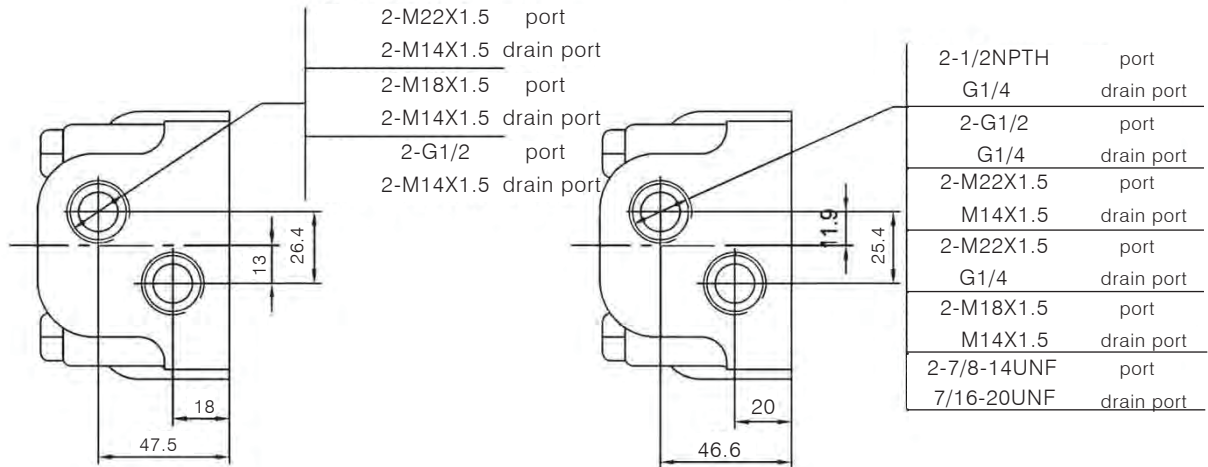


Displacement	80	100	125	160	200	250	305	400	500
H	14.5	18	22.5	29	35.5	44.5	55.5	72	86.5
L1	179.5	183	187.5	194	200.5	209.5	220.5	237	251.5

WINMAN V51 Boyutlar ve Montaj Verileri / V51 Dimensions and Mounting Data



WINMAN V51 Boyutlar ve Montaj Verileri / V51 Dimensions and Mounting Data



WINMAN V51 Sipariş Bilgileri / V51 Ordering Information

Feature			Displacement/NO.								
Flange	Shaft	Oil port/ drain port	80	100	125	160	200	250	305	400	500
Square flange; 109x109 Pilot:Ø82.55	Ø25x36 P8 M8	M22X1.5; M14X1.5									
Rhomb-flange; pilot:Ø82.55	Ø32x56 P10 M8	M22X1.5; M14X1.5									
	Ø25X36 P8 M8	G1/2; G1/4									
Square flange; 109x109 Pilot:Ø85	Ø25X36 P8 M8	G1/2; G1/4									
Square flange; 109x109 Pilot:Ø82.55	Ø32X56 P10 M8	G1/2 G1/4∑ M10									
Rhomb flange; pilot:Ø82.55	Ø32X56 P10 M8	M22x1.5; M14x1.5									
Square flange; 109x109 Pilot:Ø80	Ø25X36 P8 M8	M22x1.5; M14x1.5									
Square flange; 109x109 Pilot:Ø82.55	Ø32X56 P10 M8	G1/2; G1/4	110 462-51	110 463-51	110 464-51	110 465-51	110 466-51	110 467-51	110 468-51	110 469-51	151 686-51
Square flange; 109x109 Pilot:Ø82.55	Ø25X36 P8 M8	M22x1.5; M14x1.5									
Rhomb flange; pilot:Ø82.55	Ø32X56 P10 M8	M22x1.5; M14x1.5									
Rhomb flange; pilot Ø82.55	45 6D-30-26X6 M8	M22x1.5; no drain port									
		M22X1.5; M14X1.5									
Square flange; 109x109 Pilot:Ø82.55	45 6D-30-26X6 M8	M22X1.5; M14X1.5									
	Spline:14 m=2	G1/2 G1/4∑ M10									
Square flange; Pilot:Ø100	6D-30-25X8	Plate-connection: 2504									
Rhomb flange; pilot Ø82.55	45 6D-30-26X6 M8	M22x1.5; M14x1.5									
Square flange; 109x109 Pilot:Ø82.55	45 6D-30-26X6 M8	M22x1.5; M14x1.5									
Square flange; Pilot:Ø85	45 6D-25-2.5X6 M8	Plate-connection: 2504									

Not: Diğer modeller için bilgi alınız.

WINMAN Tip Numarası-V51 Serisi Motorlar / Type Number-V51 Series Motors

1	2	3	4	5	6	7	8
V51							

1) V51

Position V51 series motors

2) CC/R

Position displacement

- 1, 80
- 2, 100
- 3, 125
- 4, 160
- 5, 200
- 6, 250
- 7, 305
- 8, 400

3) Position Flange and pilot

- A, 2 bolt Rhomb-flange, pilot Ø70x6.4mm
- B, 2 bolt Rhomb-flange, pilot Ø80x6.4mm
- C, 2 bolt Rhomb-flange, pilot Ø82.55x6.4mm
- D, 2 bolt Rhomb-flange, pilot Ø100x6.4mm
- E, 4 bolt Square-flange, pilot Ø80x6.4mm
- F, 4 bolt Square-flange, pilot Ø82.55x6.4mm
- G, 4 bolt Square flange, pilot Ø85x6.4mm
- H, 4 bolt Square flange, pilot Ø100x7.5mm
- I, 4 bolt Rhomb-flange, pilot Ø82.55x6.4mm
- J, 4 bolt Square flange, pilot Ø85x6.4mm
- K, 4 bolt Square-flange, pilot Ø107x6.4mm
- L, 6 bolt Rhomb-flange, pilot Ø82.55x6.4mm

4) Position shaft

- 1, Ø25 straight shaft, flat key 8x7x32
- 2, Ø30 straight shaft , flat key 7.96x7.96x40
- 3, Ø25 straight shaft , flat key 8x7x28
- 4, Ø30 straight shaft , flat key 8x7x28
- 5, Ø30 straight shaft , flat key 10x8x45
- 6, Ø32 straight shaft , flat key 10x8x40
- 7, Ø32 straight shaft , flat key 10x8x45
- 8, Ø25.4 straight shaft , flat key 6.35x6.3x28
- 9, Splined shaft 6D-30X26X6
- 10, Splined shaft 6D-30X26X6
- 11, Splined shaft 12/24DP 14tooth

5) Position oil port

- A, G1/2
- B, M22X1.5
- C, 1/2-14NPTF
- D, ZG1/2
- E, M18X1.5
- F, M20X1.5
- G, 7/8-14UNF
- H, Ø13
- I, M27x2
- J, G3/4

6) Position drain port

- 2, M14x1.5
- 3, G1/4
- 4, 7/16-20UNF
- 5, ZG/4

7) Position paint color

- 7) Position paint color
- A, silver paint
- B, blue
- C, black
- D, no paint

8) Position rotation direction

- A, standard
- B, opposite