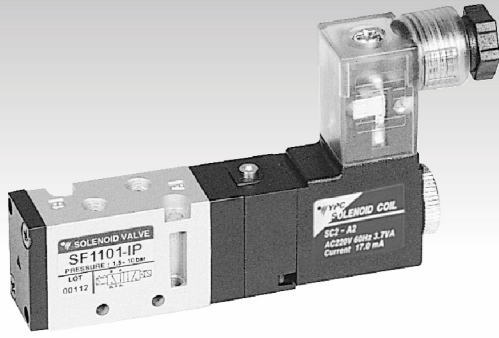
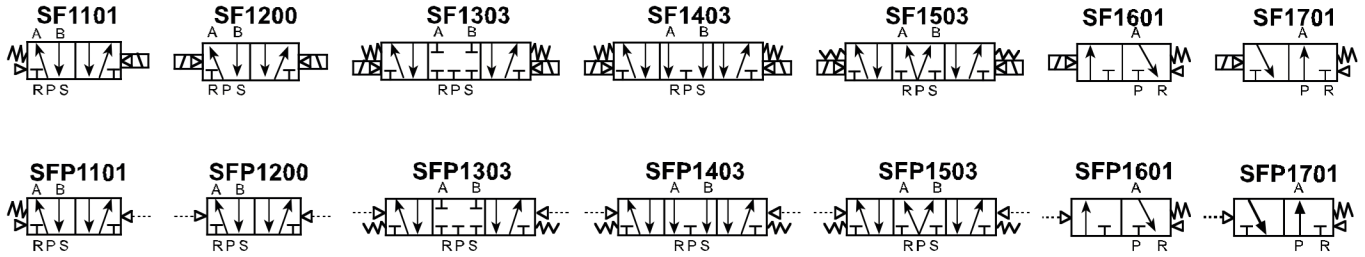
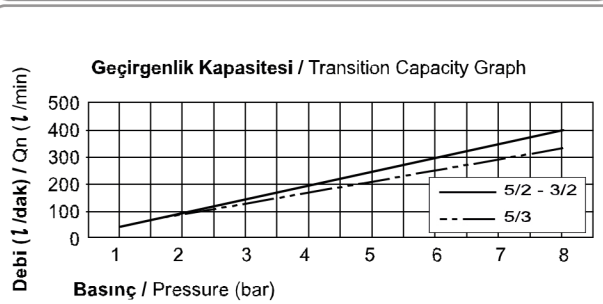


SF1000 Serisi Selenoid & Hava Kum. Valfler / SF1000 Series Solenoid & Pneu. Actuated Valves

Özellikler / Specification

Model / Model	3, 5 Yol / Port - 2 Konum / Position	5 Yol / Port - 3 Konum / Position
Akışkan / Fluid	40µ Filtrelenmiş Hava / Air(to be by 40µ Filter Element)	
Çalışma Basıncı / Operating Pressure	1.5 ~ 10.0 bar	2.0 ~ 10.0 bar
Kesit Alan / Eff. Sectional Area (mm²) - 5 bar	3.6	3.0
Voltaj Toleransı / Permissible Voltage Variation	±10% da Voltaj Aralığı / ±10% of Rated Voltage	
Sıcaklık / Temperature	5 ~ 60 °C / 41 ~ 140 °F	
Min. Aktifleşme Zamanı(sn) / Min. Activating Time(sec)	25 ms yada daha az / 25 ms or less	35 ms yada daha az / 35 ms or less
Max. Çalışma Frekansı / Max. Frequency	5 çevrim/sn / 5 cycle/sec	3 çevrim/sn / 3 cycle/sec
Yağlama / Lubrication	Gerekirmez / Not Required (ISO VG32#)	
Yalıtım / Insulation	F Sınıfı / F Class	
Voltaj Aralığı / Voltage Range	AC: 20% veya Daha Az / or Less - DC: 10% veya Daha Az / or Less	
Güç Tüketimi / Power Consumption	Tutma / Holding - AC:3.5VA (60Hz) / DC: 2.5W	

Sembol / Symbol

Akış Diyagramı / Flow Chart

Parçaların Malzemeleri / Material of Parts

Parça / Item	Malzeme / Material
Valf Gövdesi / Valve Body	Kokil Döküm Alüminyum / Die-Cast Aluminium
Spül / Spool	Alüminyum / Aluminium
Keçeler / Seals	NBR
Yay / Spring	Paslanmaz / Stainless
Kapak / Cap	Sıkıştırılmış Çinko Döküm / Zinc Pressure Die-Cast
Pilot Parçaları / Pilot Parts	Cam Takviyeli Naylon / Glass Filled Nylon
Armatür / Armature	Paslanmaz Çelik / Stainless Steel
Armatür Keçeleri / Armature Seals	Viton / Viton

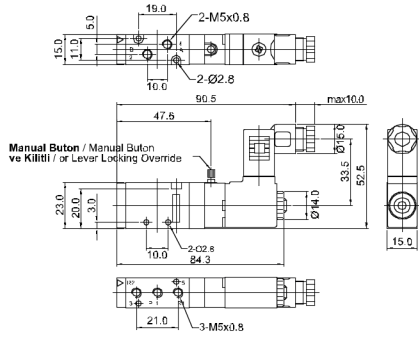
Sipariş Kodu / Ordering Code

SF1	1	0	1	I	P	SC1	CN1	A2	
Valf Serisi Valve Series	Fonksiyon Function	Bağlantı Ölç. & Diş Tipi Port Size & Thread	Geri Dönme Yöntemi Return Method	Pilot Tipi Int. / Ext. Pilot	Manuel Çalıştırma Manual Operator	Selenoid Bobin Tipi Solenoid Coil Type	Soket Tipi Connector Type	Voltaj Voltage	
SF1: Selenoid Valf SF1: Solenoid Valve	1: 5/2 Tek 1: 5/2 Single	0: M5x 0.8	0: Yok 0: None	1: İçten Pilot 1: Internal Pilot	0: Yok 0: None	0: Yok 0: None	0: Yok 0: None	0: Yok 0: None	
	2: 5/2 Çift 2: 5/2 Double		1: Hava + Yay 1: Air + Spring			SC1: 3'lü Bağlantı SC1: 3 Pin Connector Coil		A2: AC 220V	
	3: 5/3 Kapalı Merkez 3: 5/3 Closed Center		2: Hava 2: Air			SG1: Kauçuk Rondelalı SG1: Grommet / Flying Leads		CN1: Normal Soket CN1: Normal Connector	A1: AC 110V
	4: 5/3 Açık Merkez 4: 5/3 Open Center					SD1: Kauçuk Rondelalı ve LED'li SD1: Grommet / Flying Leads With LED		CD1: Soket LED'li CD1: Connector With LED	A4: AC 24V
SFP1: Pnömatik Valf SFP1: Pneumatic Valve	5: 5/3 Basınç Merkez 5: 5/3 Pressure Center	1: 10-32 UNF	3: Yay 3: Spring	L: Kilitli L: Lever Locking	P: Yaylı Kilitli P: Push Non-Locking	SL1: 90 Derece Fiş Giriş Kablo LED'li SL1: 90 Degree Plug-in Wire Assembly With LED	CZ1: Soket LED'li ve Şok Emicili CZ1: Connector With LED & Surge Suppressor	D4: DC 24V	
	6: 3/2 Normalde Kapalı 6: 3/2 Normally Closed					SM1: 180 Derece Fiş Giriş Kablo LED'li SM1: 180 Degree Plug-in Wire Assembly With LED		D2: DC 12V	
	7: 3/2 Normalde Açık 7: 3/2 Normally Open								

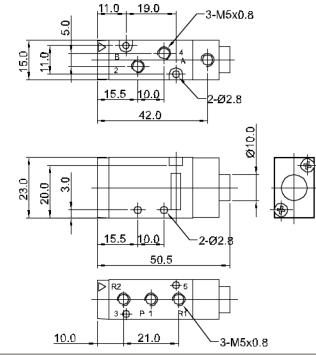
SF1000 Serisi Selenoid & Hava Kum. Valfler / SF1000 Series Solenoid & Pneu. Actuated Valves

Teknik Çizimler / Technical Drawings

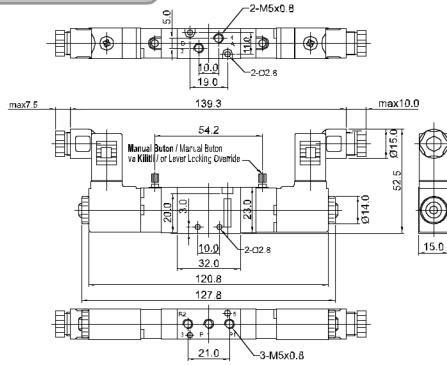
5/2 Selenoid / Solenoid



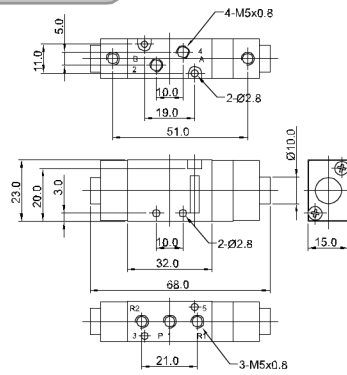
5/2 Pnömatik / Pneumatic



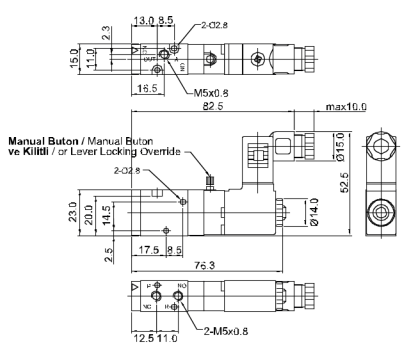
5/3 Selenoid / Solenoid



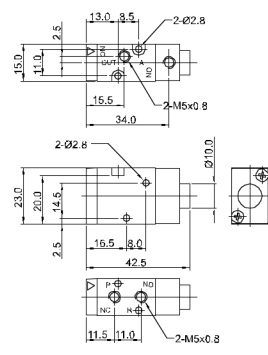
5/3 Pnömatik / Pneumatic



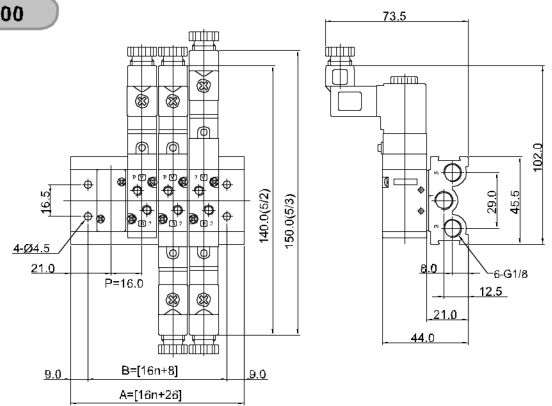
3/2 Selenoid / Solenoid



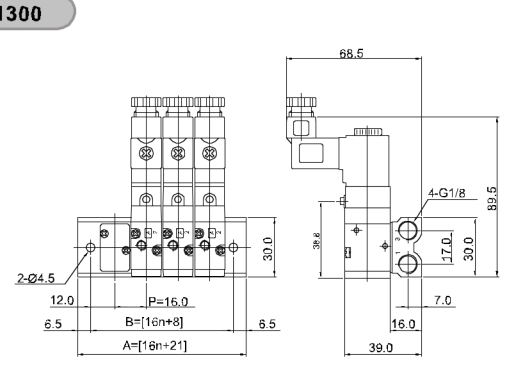
3/2 Pnömatik / Pneumatic



MF 1500



MF 1300



5 Yol Manifold Bloğu Ölçüleri
5 Port Manifold Block Dimensions

Manifold Bloğu / Manifold Block

Parça / İstasyon Item / Station	2	4	6	8	10
B	40.0	72.0	104.0	136.0	168.0
A	48.0	80.0	122.0	144.0	176.0

MF1500	2
Sembol / Symbol	İstasyon / Station
MF1500 (5 yol / way)	02, 04, 06, 08, 10

3 Yol Manifold Bloğu Ölçüleri
3 Port Manifold Block Dimensions

Manifold Bloğu / Manifold Block

Parça / İstasyon Item / Station	2	4	6	8	10
B	40.0	72.0	104.0	136.0	168.0
A	53.0	85.0	117.0	149.0	181.0

MF1300	2
Sembol / Symbol	İstasyon / Station
MF1300 (3 yol / way)	02, 04, 06, 08, 10