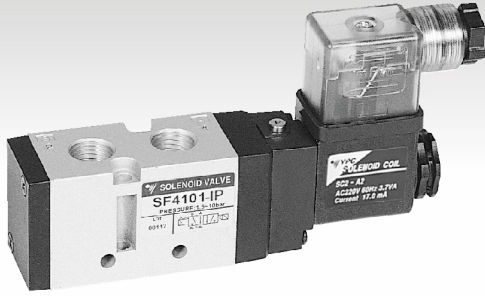
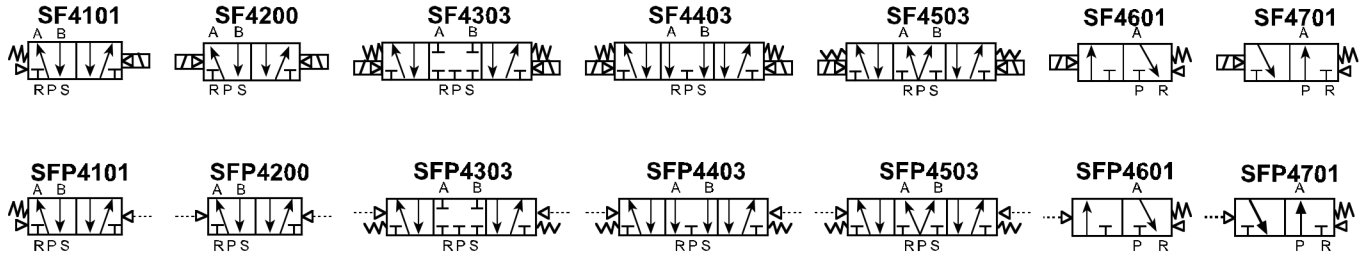
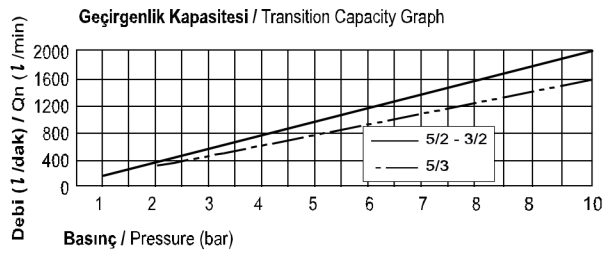


SF4000 Serisi Selenoid & Hava Kum. Valfler / SF4000 Series Solenoid & Pneu. Actuated Valves

Özellikler / Specification

Model / Model	3, 5 Yol / Port - 2 Konum / Position	5 Yol / Port - 3 Konum / Position
Akışkan / Fluid	40µm Filtrelenmiş Hava / Air (to be by 40µm Filter Element)	
Çalışma Basıncı / Operating Pressure	1.5 ~ 10.0 bar	2.0 ~ 10.0 bar
Kesit Alan / Eff. Sectional Area (mm²) - 5 bar	19.0	11.5
Voltaj Toleransı / Permissible Voltage Variation	±10% da Voltaj Aralığı / ±10% of Rated Voltage	
Sıcaklık / Temperature	5 ~ 60 °C / 41 ~ 140 °F	
Min. Aktifleşme Zamanı (sn) / Min. Activating Time (sec)	25 ms yada daha az / 25 ms or less	35 ms yada daha az / 35 ms or less
Max. Çalışma Frekansı / Max. Frequency	5 çevrim/sn / 5 cycle/sec	3 çevrim/sn / 3 cycle/sec
Yağlama / Lubrication	Gerektirmez / Not Required (ISO VG32#)	
Yalıtım / Insulation	F Sınıfı / F Class	
Voltaj Aralığı / Voltage Range	AC: 20% veya Daha Az / or Less - DC: 10% veya Daha Az / or Less	
Güç Tüketimi / Power Consumption	Tutma / Holding - AC: 3.5VA (60Hz) / DC: 2.5W	

Sembol / Symbol

Akış Diyagramı / Flow Chart

Parçaların Malzemeleri / Material of Parts

Parça / Item	Malzeme / Material
Valf Gövdesi / Valve Body	Kokil Döküm Alüminyum / Die-Cast Aluminium
Spul / Spool	Alüminyum / Aluminium
Keçeler / Seals	NBR
Yay / Spring	Paslanmaz / Stainless
Kapak / Cap	Sıkıştırılmış Çinko Döküm / Zinc Pressure Die-Cast
Pilot Parçaları / Pilot Parts	Cam Takviyeli Naylon / Glass Filled Nylon
Armatür / Armature	Paslanmaz Çelik / Stainless Steel
Armatür Keçeleri / Armature Seals	Viton / Viton

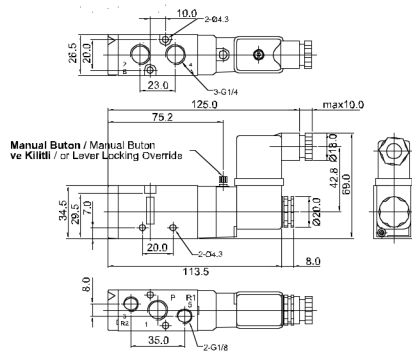
Sipariş Kodu / Ordering Code

SF4	1	0	1	I	P	SC2	CN2	A2	
Valf Serisi / Valve Series	Fonksiyon / Function	Bağlantı Ölç. & Diş Tipi / Port Size & Thread	Geri Dönme Yöntemi / Return Method	Pilot Tipi / Int. / Ext. Pilot	Manuel Çalıştırma / Manual Operator	Selenoid Bobin Tipi / Solenoid Coil Type	Soket Tipi / Connector Type	Voltaj / Voltage	
SF4: Selenoid Valf SF4: Solenoid Valve	1: 5/2 Tek 1: 5/2 Single	0: G 1/4"	0: Yok 0: None	1: İçten Pilot 1: Internal Pilot	P: Yaylı Kilitli P: Push Non-Locking	0: Yok 0: None	0: Yok 0: None	0: Yok 0: None	
	2: 5/2 Çift 2: 5/2 Double		1: Hava + Yay 1: Air + Spring					A2: AC 220V	
	3: 5/3 Kapatıcı Merkez 3: 5/3 Closed Center		2: Hava 2: Air					A1: AC 110V	
	4: 5/3 Açık Merkez 4: 5/3 Open Center		3: Yay 3: Spring					A4: AC 24V	
SFP4: Pnömatik Valf SFP4: Pneumatic Valve	5: 5/3 Basıncı Merkez 5: 5/3 Pressure Center	1: NPT 1/4"	3: Yay 3: Spring	L: Kilitli L: Lever Locking	SD2: Grammet / Flying Leads With LED	SG2: Kaçuk Rondelali SG2: Grommet / Flying Leads	CD2: Soket LED'li CD2: Connector With LED	D4: DC 24V	
	6: 3/2 Normalde Kapatıcı 6: 3/2 Normally Closed							C22: Soket LED'li ve Şok Emicili C22: Connector With LED & Surge Suppressor	D2: DC 12V
	7: 3/2 Normalde Açık 7: 3/2 Normally Open								

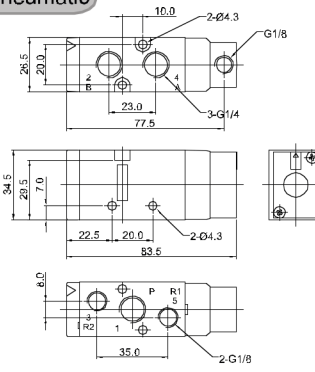
SF4000 Serisi Selenoid & Hava Kum. Valfler / SF4000 Series Solenoid & Pneu. Actuated Valves

Teknik Çizimler / Technical Drawings

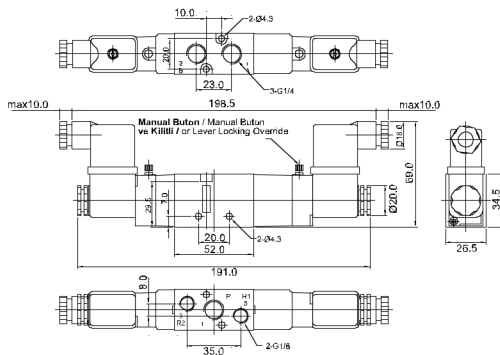
5/2 Selenoid / Solenoid



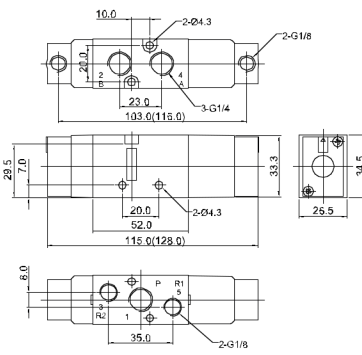
5/2 Pnömatik / Pneumatic



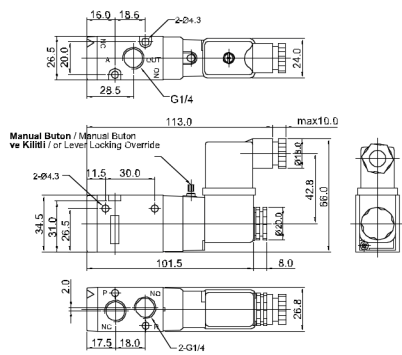
5/3 Selenoid / Solenoid



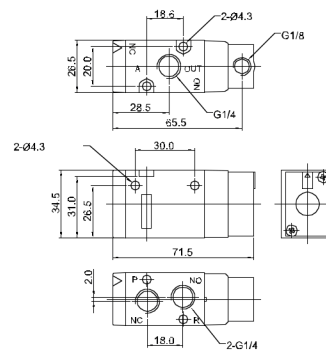
5/3 Pnömatik / Pneumatic



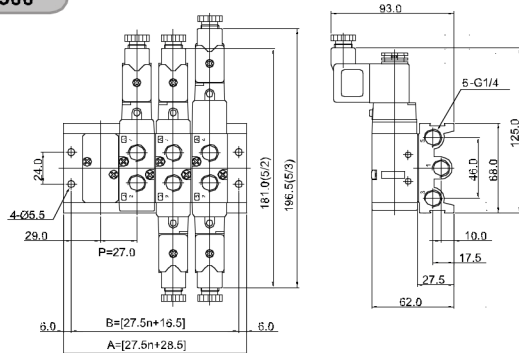
3/2 Selenoid / Solenoid



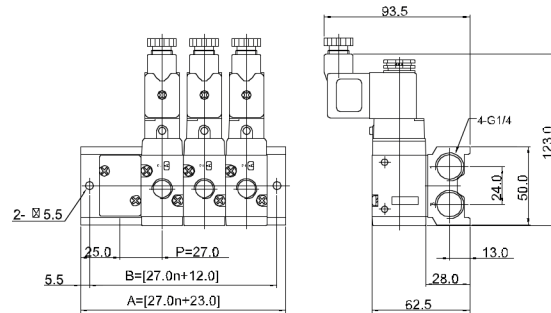
3/2 Pnömatik / Pneumatic



MF 4500



MF 4300



5 Yol Manifold Bloğu Ölçüleri
5 Port Manifold Block Dimensions

Manifold Bloğu / Manifold Block

Parça / İstasyon Item / Station	2	4	6	8	10	MF4500 Sembol / Symbol	2 İstasyon / Station
B	71.5	126.5	181.5	236.5	291.5	MF4500 (5 yol / way)	02, 04, 06, 08, 10
A	83.5	138.5	193.5	248.5	303.5		

3 Yol Manifold Bloğu Ölçüleri
3 Port Manifold Block Dimensions

Manifold Bloğu / Manifold Block

Parça / İstasyon Item / Station	2	4	6	8	10	MF4300 Sembol / Symbol	2 İstasyon / Station
B	66.0	120.0	174.0	228.0	282.0	MF4300 (3 yol / way)	02, 04, 06, 08, 10
A	77.0	131.0	185.0	239.0	293.0		