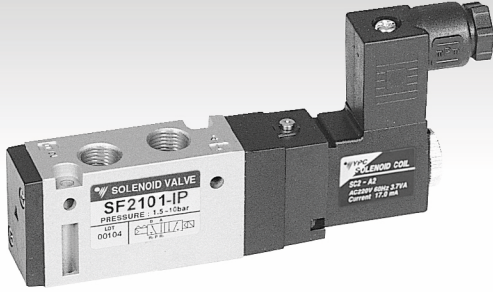
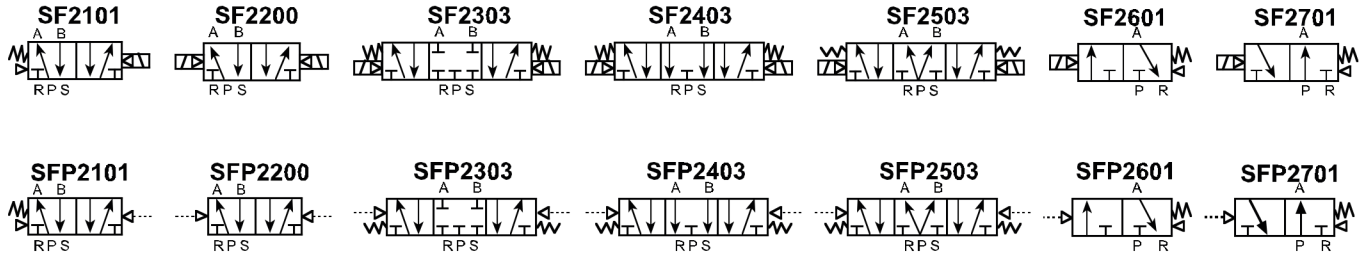
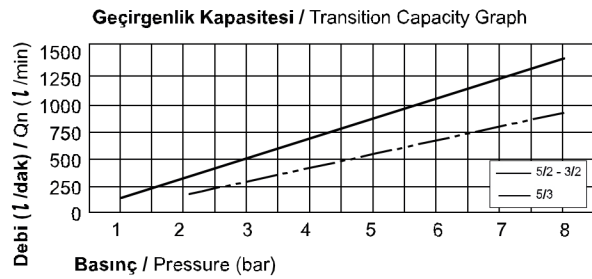


SF2000 Serisi Selenoid & Hava Kum. Valfler / SF2000 Series Solenoid & Pneu. Actuated Valves

Özellikler / Specification

Model / Model	3, 5 Yol / Port - 2 Konum / Position	5 Yol / Port - 3 Konum / Position
Akışkan / Fluid	40µm Filtrelenmiş Hava / Air (to be by 40µm Filter Element)	
Çalışma Basıncı / Operating Pressure	1.5 ~ 10.0 bar	2.0 ~ 10.0 bar
Kesit Alan / Eff. Sectional Area (mm²) - 5 bar	12.6	9.0
Voltaj Toleransı / Permissible Voltage Variation	±10% da Voltaj Aralığı / ±10% of Rated Voltage	
Sıcaklık / Temperature	5 ~ 60 °C / 41 ~ 140 °F	
Min. Aktifleşme Zamanı (sn) / Min. Activating Time (sec)	25 ms yada daha az / 25 ms or less	35 ms yada daha az / 35 ms or less
Max. Çalışma Frekansı / Max. Frequency	5 çevrim/sn / 5 cycle/sec	3 çevrim/sn / 3 cycle/sec
Yağlama / Lubrication	Gerektirmez / Not Required (ISO VG32#)	
Yalıtım / Insulation	F Sınıfı / F Class	
Voltaj Aralığı / Voltage Range	AC: 20% veya Daha Az / or Less - DC: 10% veya Daha Az / or Less	
Güç Tüketimi / Power Consumption	Tutma / Holding - AC: 3.5VA (60Hz) / DC: 2.5W	

Sembol / Symbol

Akış Diyagramı / Flow Chart

Parçaların Malzemeleri / Material of Parts

Parça / Item	Malzeme / Material
Valf Gövdesi / Valve Body	Kokil Döküm Alüminyum / Die-Cast Aluminium
Spul / Spool	Alüminyum / Aluminium
Keçeler / Seals	NBR
Yay / Spring	Paslanmaz / Stainless
Kapak / Cap	Sıkıştırılmış Çinko Döküm / Zinc Pressure Die-Cast
Pilot Parçaları / Pilot Parts	Cam Takviyeli Naylon / Glass Filled Nylon
Armatür / Armature	Paslanmaz Çelik / Stainless Steel
Armatür Keçeleri / Armature Seals	Viton / Viton

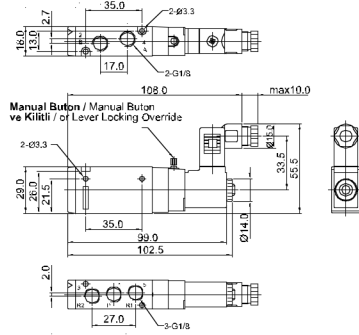
Sipariş Kodu / Ordering Code

SF2	1	0	1	I	P	SC1	CN1	A2
Valf Serisi / Valve Series	Fonksiyon / Function	Bağlantı Ölç. & Diş Tipi / Port Size & Thread	Geri Dönme Yöntemi / Return Method	Pilot Tipi / Int. / Ext. Pilot	Manuel Çalıştırma / Manual Operator	Selenoid Bobin Tipi / Solenoid Coil Type	Soket Tipi / Connector Type	Voltaj / Voltage
SF2: Selenoid Valf SF2: Solenoid Valve	1: 5/2 Tek 1: 5/2 Single	0: G 1/8"	0: Yok 0: None	1: İçten Pilot 1: Internal Pilot	0: Yok 0: None	0: Yok 0: None	0: Yok 0: None	0: Yok 0: None
	2: 5/2 Çift 2: 5/2 Double		1: Hava + Yay 1: Air + Spring			SC1: 3'lü Bağlantı SC1: 3 Pin Connector Coil	CN1: Normal Soket CN1: Normal Connector	A2: AC 220V A1: AC 110V
	3: 5/3 Kapalı Merkez 3: 5/3 Closed Center		2: Hava 2: Air			SG1: Kauçuk Rondelali SG1: Grommet / Flying Leads	CD1: Soket LED'li CD1: Connector With LED	A4: AC 24V D4: DC 24V
	4: 5/3 Açık Merkez 4: 5/3 Open Center					SD1: Kauçuk Rondelali ve LED'li SD1: Grommet / Flying Leads With LED		
SFP2: Pnömatik Valf SFP2: Pneumatic Valve	5: 5/3 Basınç Merkez 5: 5/3 Pressure Center	1: NPT 1/8"	3: Yay 3: Spring	L: Kilitli L: Lever Locking	SL1: 90 Derece Fiş Giriş Kablo LED'li SL1: 90 Degree Plug-in Wire Assembly With LED	SM1: 180 Derece Fiş Giriş Kablo LED'li SM1: 180 Degree Plug-in Wire Assembly With LED	CZ1: Soket LED'li ve Şok Emicili CZ1: Connector With LED & Surge Suppressor	D2: DC 12V
	6: 3/2 Normalde Kapalı 6: 3/2 Normally Closed							
	7: 3/2 Normalde Açık 7: 3/2 Normally Open							

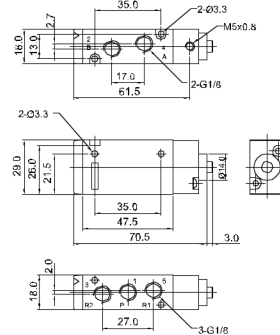
SF2000 Serisi Solenoid & Hava Kum. Valfler / SF2000 Series Solenoid & Pneu. Actuated Valves

Teknik Çizimler / Technical Drawings

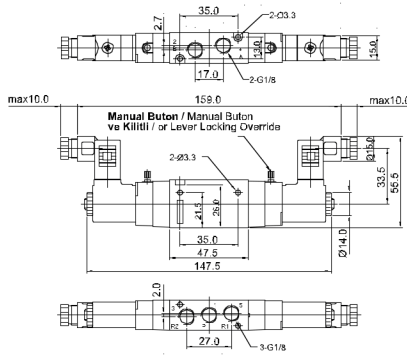
5/2 Solenoid / Solenoid



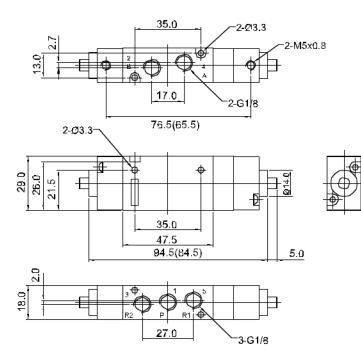
5/2 Pnömatik / Pneumatic



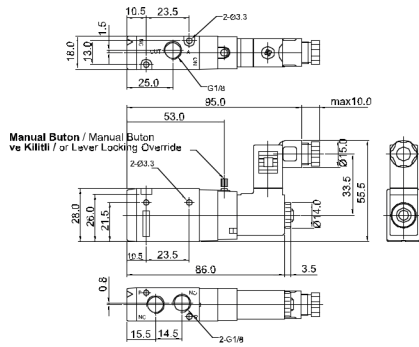
5/3 Solenoid / Solenoid



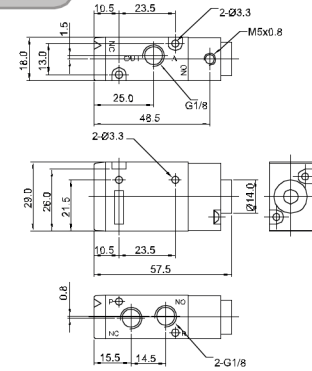
5/3 Pnömatik / Pneumatic



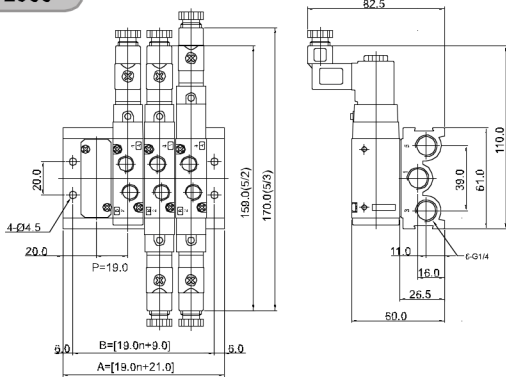
3/2 Solenoid / Solenoid



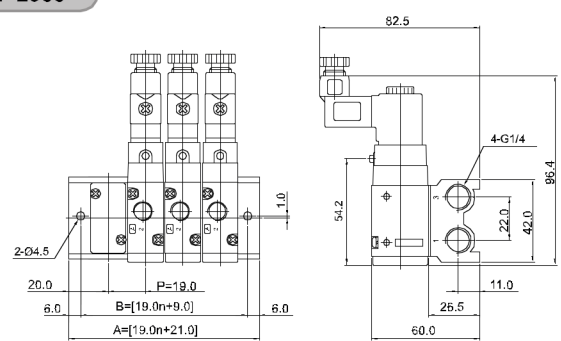
3/2 Pnömatik / Pneumatic



MF 2500



MF 2300



5 Yol Manifold Bloğu Ölçüleri
5 Port Manifold Block Dimensions

Manifold Bloğu / Manifold Block

Parça / İstasyon İtem / Station	2	4	6	8	10
B	47.0	85.0	123.0	161.0	199.0
A	59.0	97.0	135.0	173.0	211.0

MF2500	2
Sembol / Symbol	İstasyon / Station
MF2500 (5 yol / way)	02, 04, 06, 08, 10

3 Yol Manifold Bloğu Ölçüleri
3 Port Manifold Block Dimensions

Manifold Bloğu / Manifold Block

Parça / İstasyon İtem / Station	2	4	6	8	10
B	47.0	85.0	123.0	161.0	199.0
A	59.0	97.0	135.0	173.0	211.0

MF2300	2
Sembol / Symbol	İstasyon / Station
MF2300 (3 yol / way)	02, 04, 06, 08, 10