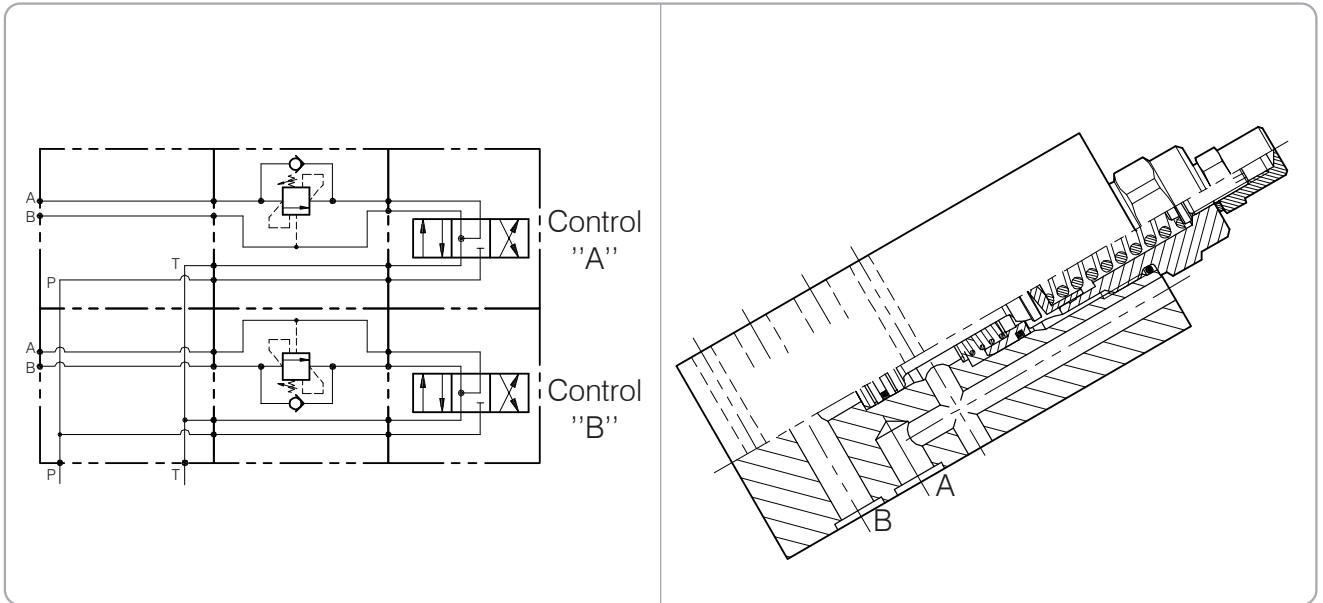


OWC-SE-L10-...

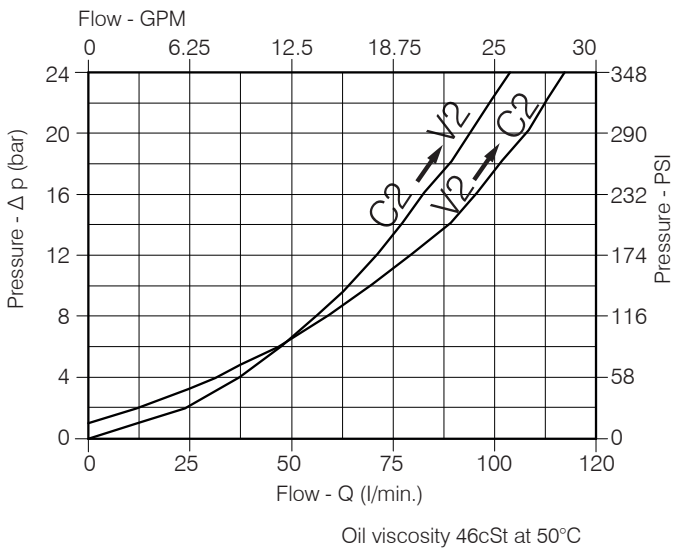
SINGLE COUNTERBALANCE WITH SANDWICH INSTALLATION (CETOP)



Performance

Rated size	DN 8/10
Min/Max flow-rate	1/90 l/min - 0.26/24 GPM
Max peak pressure	350 bar - 5075 PSI
Max setting pressure	350 bar - 5075 PSI
Standard pilot ratio	6.2 : 1
Room temperature	-30°C + 50°C
Oil temperature	-30°C + 80°C
Recommended filtration	30 micron
Weight	
Weight	

Performance Details



NOTE:

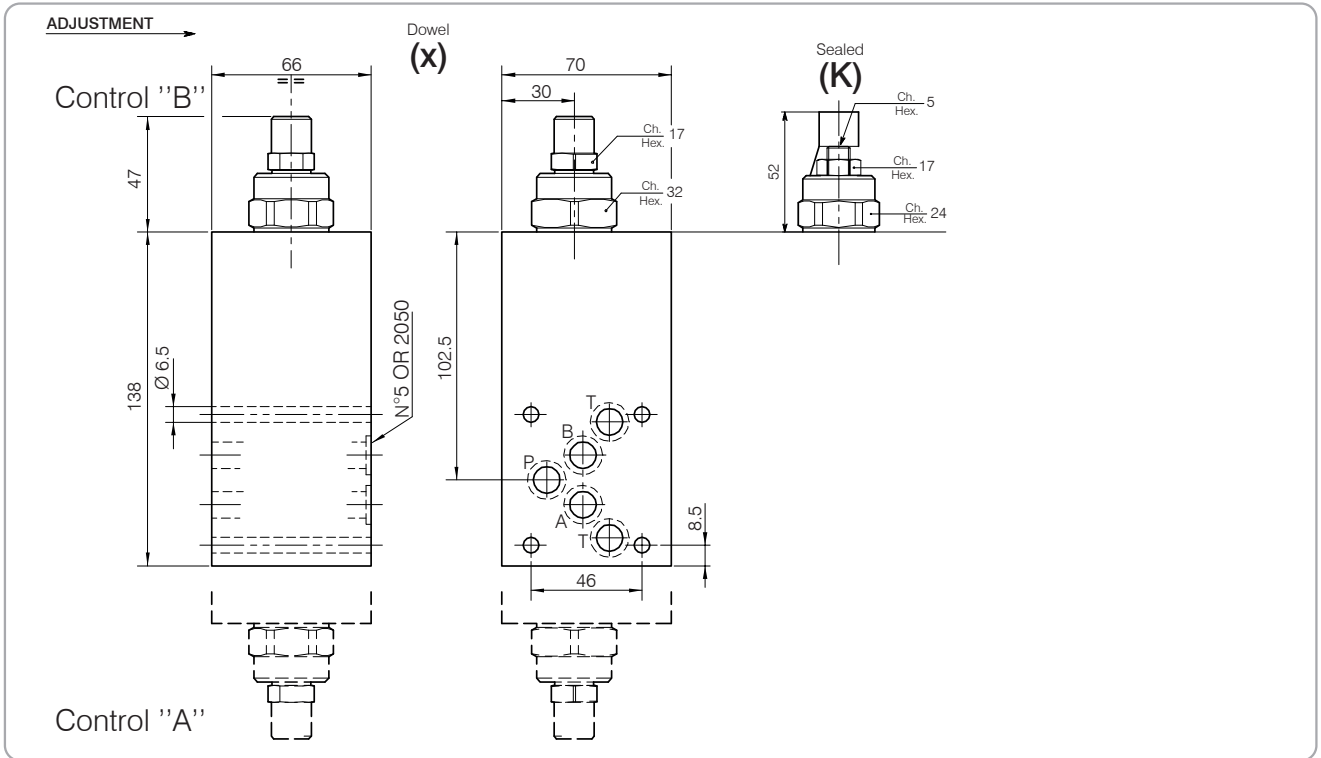
Valve should be set at 1.3 times load induced pressure.

EXAMPLE:

Max working pressure: 350 bar / 1.3 = 270 bar

OWC-SE-L10-...

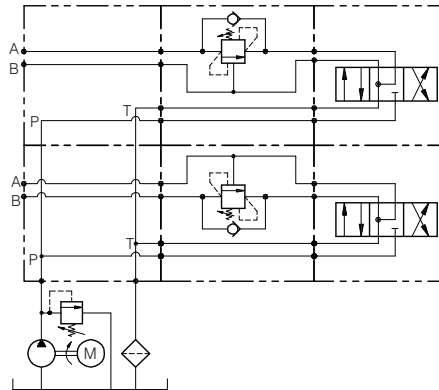
Hydraulic valves and integrated components



Dimensions

Setting Range	Flange Type	Max flow-rate	Control
		l/min - GPM	
483	CETOP 05	90-24	A
484	CETOP 05	90-24	B

TYPICAL CIRCUIT EXAMPLE



Ordering Code

0 0 1 • 4 8 3 • 0 • X 0 • A

Setting Range	
483	
484	
Setting range 60 ÷ 350 bar (yellow spring)	
Std. bar setting Q=5 l/1') (250) bar	Pressure rice - turn of screw (125)

Body
Zinc plated
Steel

Adjustment
X= Dowel
K= Sealed

Pilot Ratios
0 = 6.2 : 1