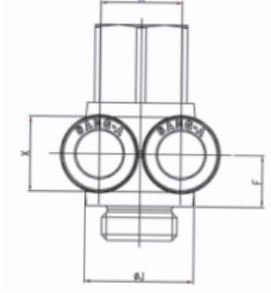
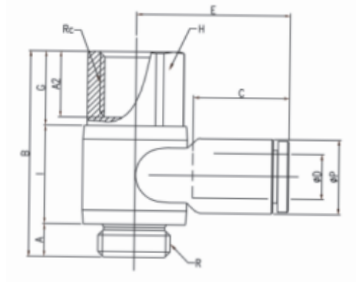


SANG-A GPAF-GG Serisi İkili Döner Bağlantılar

Dual Female Banjo



Boyutlar

MODEL [ØD-T] Tube: (Metric) - Thread: (G)

| MODEL | ØD | R | Rc | ØP | A1 | A2 | B | C | E | F | G | H | I | ØJ | K | X | Orifice (Ømm) | W.G(g) | Q'ty/ inbox |
|----------------|----|------|------|------|-----|----|------|------|------|------|------|----|------|------|------|------|---------------|--------|-------------|
| GPAF 04G01-G01 | 4 | G1/8 | G1/8 | 9 | 5 | 9 | 30 | 14.5 | 20.6 | 7.3 | 10.5 | 13 | 14.5 | 14 | 9.3 | 8.6 | 3.2 | 19.8 | 50 |
| GPAF 04G02-G02 | 4 | G1/4 | G1/4 | 9 | 6 | 12 | 37.5 | 14.5 | 22.6 | 9 | 13.5 | 16 | 18 | 19 | 9.3 | 8.6 | 3.2 | 33.4 | 50 |
| GPAF 04G03-G03 | 4 | G3/8 | G3/8 | 9 | 7 | 13 | 43 | 14.5 | 24.6 | 10.5 | 15 | 20 | 21 | 22.4 | 9.3 | 8.6 | 3.2 | 52.6 | 25 |
| GPAF 06G01-G01 | 6 | G1/8 | G1/8 | 11.2 | 5 | 9 | 30 | 15.5 | 22 | 7.3 | 10.5 | 13 | 14.5 | 14 | 11.4 | 11 | 5 | 21.4 | 50 |
| GPAF 06G02-G02 | 6 | G1/4 | G1/4 | 11.2 | 6 | 12 | 37.5 | 15.5 | 23.5 | 9 | 13.5 | 16 | 18 | 19 | 11.4 | 11 | 5 | 34.9 | 50 |
| GPAF 06G03-G03 | 6 | G3/8 | G3/8 | 11.2 | 7 | 13 | 43 | 15.5 | 25.7 | 10.5 | 15 | 20 | 21 | 22.4 | 11.4 | 11 | 5 | 54.2 | 25 |
| GPAF 08G01-G01 | 8 | G1/8 | G1/8 | 13.6 | 5 | 9 | 30 | 17.8 | 25.6 | 8 | 10.5 | 13 | 14.5 | 14 | 14.2 | 13 | 5.2 | 24.2 | 25 |
| GPAF 08G02-G02 | 8 | G1/4 | G1/4 | 13.6 | 6 | 12 | 37.5 | 17.8 | 28.1 | 9 | 13.5 | 16 | 18 | 19 | 14.2 | 13 | 6.8 | 37.7 | 25 |
| GPAF 08G03-G03 | 8 | G3/8 | G3/8 | 13.6 | 7 | 13 | 43 | 17.8 | 29.8 | 10.5 | 15 | 20 | 21 | 22.4 | 14.2 | 13 | 7 | 55.8 | 25 |
| GPAF 08G04-G04 | 8 | G1/2 | G1/2 | 13.6 | 8.5 | 16 | 49.5 | 17.8 | 32.1 | 11 | 19 | 24 | 22 | 27 | 14.2 | 13 | 7 | 92.4 | 20 |
| GPAF 10G02-G02 | 10 | G1/4 | G1/4 | 16.3 | 6 | 12 | 37.5 | 19.4 | 27.5 | 9.7 | 13.5 | 16 | 18 | 19 | 17 | 16 | 7.3 | 38.9 | 15 |
| GPAF 10G03-G03 | 10 | G3/8 | G3/8 | 16.3 | 7 | 13 | 43 | 19.4 | 29.6 | 10.5 | 15 | 20 | 21 | 22.4 | 17 | 16 | 9 | 59.8 | 15 |
| GPAF 10G04-G04 | 10 | G1/2 | G1/2 | 16.3 | 8.5 | 16 | 49.5 | 19.4 | 31.5 | 11 | 19 | 24 | 22 | 27 | 17 | 16 | 9 | 95.3 | 15 |
| GPAF 12G03-G03 | 12 | G3/8 | G3/8 | 19.7 | 7 | 13 | 43 | 22.4 | 32.4 | 11.9 | 15 | 20 | 21 | 22.4 | 20 | 19.5 | 8.7 | 68.1 | 10 |
| GPAF 12G04-G04 | 12 | G1/2 | G1/2 | 19.7 | 8.5 | 16 | 49.5 | 22.4 | 34.9 | 11.9 | 19 | 24 | 22 | 27 | 20 | 19.5 | 10 | 103.7 | 10 |