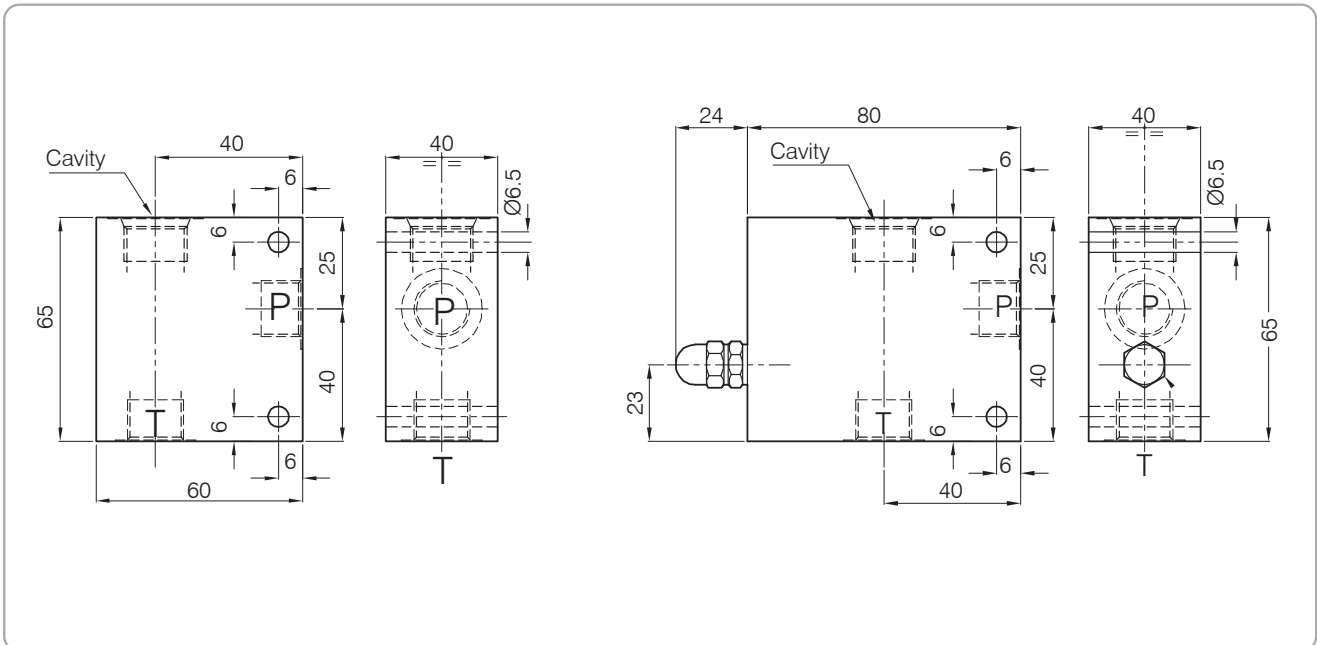


C-...GAS-102L-T-...

STANDARD ALUMINIUM MANIFOLDS



Dimensions

Model Number	Cavity	Port size T-P GAS (BSPP)	Cartridge See page	Coil See page
527	CE-102-L (Ø 23.5mm-3/4" GAS)	1/2"	9/10	37
529	CE-102-L (Ø23.5mm-3/4" GAS)	3/4"	11/12	38

Ordering Code

5 • 5 2 7 • E • 0 • 1

Body Number
527
529

Emergency screw
E Emergency screw