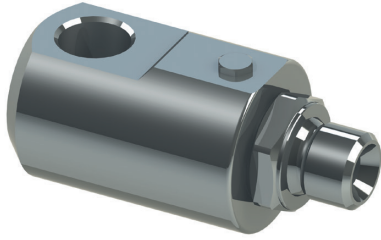


Winman 90° Dirsek Döner Elemanlar – GG90 Serisi / GG 90° Rotating Couplings



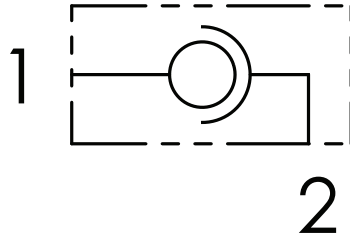
Teknik Özellikler / Technical Data

Mineral Yağ / Mineral oil	ISO 6743/4
Yağ viskozitesi / Oil viscosity	15-250 mm ² /s
Filtreli maksimum kirlenme indeksi Max contamination index with filter	ISO 4406:1999
Yağ sıcaklığı / Oil temperature	-20°C +80°C
Ortam sıcaklığı / Ambient temperature	-20°C +50°C

It is necessary a filter use to protect the valve (advised filtration 15 µm)

Vanayı korumak için filtre kullanılması gerekir (önerilen filtrasyon 15 µm)

Hydraulic circuit / Hidrolik Devre



Teknik Özellikler / Technical characteristics

Type	A	Max. Flow l/min	Max. Pressure bar	Max. Rotation Pressure bar	Max. rotation speed rev/min	B	C	D	E	L	Ch.1	Approx weight kg/ lb
GG90140	BSPP 1/4	25	400	200	212	50	11	33,5	11	69	19	0,31
GG90380	BSPP 3/8	35			173	54	14	37,5	13	76	24	0,41
GG90120	BSPP 1/2	60	300	150	160	63	15	39,5	14	87	27	0,52
GG90340	BSPP 3/4	100			120	70	19	54,5	18	100	34	0,96
GG90100	BSPP 1	180	100	100	100	80	21	59	25	113	41	1,25

Sipariş Kodu / Ordering Code

GG90
01
02

01	90° dönen kavramalar / 90° rotating couplings		GG90
02	Boyut / Size	BSPP 1/4	140
		BSPP 3/8	380
		BSPP 1/2	120
		BSPP 3/4	340
		BSPP 1	100

Winman 90° Dirsek Döner Elemanlar – GG90 Serisi / GG 90° Rotating Couplings

Tightening torques for stud	
②	Nm
BSPP 1/4	40
BSPP 3/8	90
BSPP 1/2	120
BSPP 3/4	210
BSPP 1	370

60° female swivel ends tightening torque values	
①	Nm
BSPP 1/4	20
BSPP 3/8	35
BSPP 1/2	60
BSPP 3/4	115
BSPP 1	140

$\left[\begin{array}{c} \text{mm} \\ \text{(Inches)} \end{array} \right]$

