

## PİLOT ÇEKVALFLER / PILOT CHECK VALVES

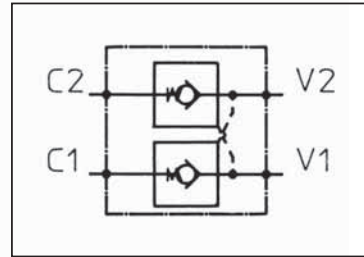
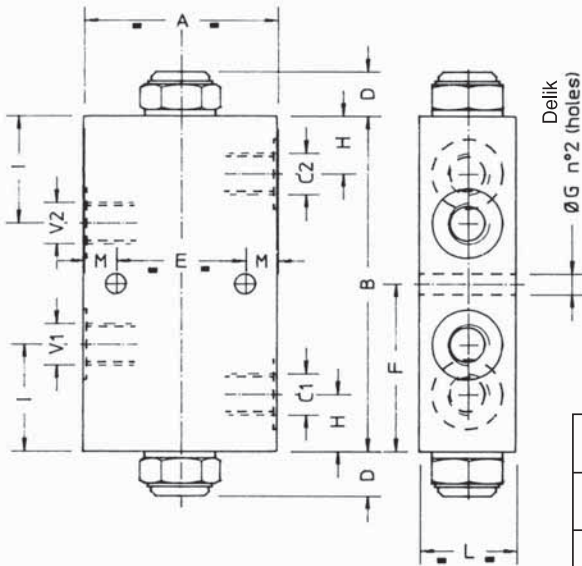
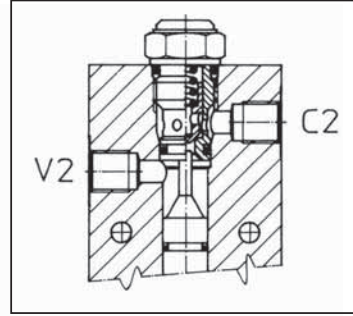
### VNR/C/SO/DE

#### ÇALIŞMA / OPERATION

Bir silindiri kilitleme ya da bir devrede kilitleme sağlayarak akışın geri dönüşünü pilot verilene kadar önler.  
Çift ve tek pilot kontrollü çek modları içten pilotludur. Yuva "V" direkt bağlı iç pilot.

To lock a cylinder or part a circuit and prevent reverse flow until pilot pressure is applied.  
Double and single pilot operated check models are internally piloted. Port "V"  
Line assembly internal pilot.

Alüminyum gövde standart, çelik gövde isteğe bağlı.  
Alluminium body valves as standard, steel body is on request.

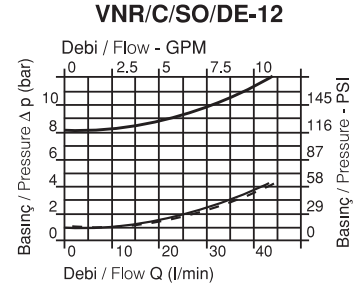
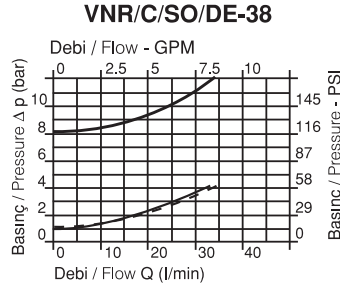
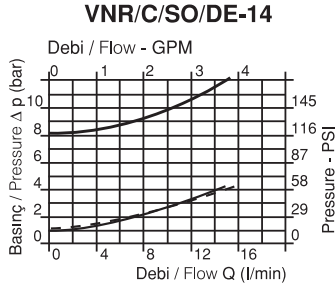


#### PERFORMANSLAR / PERFORMANCES

Max. basınç Max. pressure		350 bar 5075 PSI
Oda sıcaklığı Room Temperature	°C	-30 +50
Yağ sıcaklığı Oil temperature	°C	-30 +80
Filtrasyon Filtration	micron	30 ÷ 50

C - V	A	B	D	E	F	G	H	I	L	M	Pilot oranı Pilot ratio	Nominal Rated size DN	Max. debi / Max. flow rate l/min-GPM	
1/4" GAS	60	105	15	40	52.5	6.5	18	33.5	30	10	4:1	6	15-4	VNR/C/SO/DE-14
3/8" GAS	70	110	118		55	8.5	20.5	38	35	15		8	35-9.2	VNR/C/SO/DE-38
1/2" GAS					10	45-12	VNR/C/SO/DE-12							

**HİDROLİK PERFORMANS / HYDRAULIC PERFORMANCE**

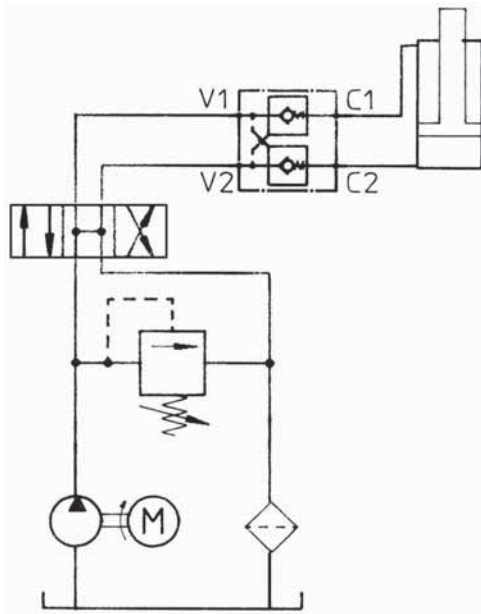


- VNR/C/SO/DE-... 8 bar
- - - - VNR/C/SO/DE-... 1 Bar
- · — VNR/C/SO/DE-... (Piloted opened)

- (Serbest akış / Free flow)
- (Serbest akış / Free flow)
- (Piloted opened)

Yağ vizkozitesi 46 cSt at 50 °C  
Oil viscosity 46 cSt at 50 °C

**TİPİK DEVRE ÖRNEĞİ  
TYPICAL CIRCUIT EXAMPLE**



Açma basıncı Opening pressure 1 bar	Açma basıncı Opening pressure 8 bar	VALF / VALVE
047	127	VNR/C/SO/DE-14
128	129	← Pilot piston O.ring
049	133	VNR/C/SO/DE-38
134	135	← Pilot piston O.ring
050	136	VNR/C/SO/DE-12
137	138	← Pilot piston O.ring

SİPARİŞ KODU / ORDERING CODE

003      000