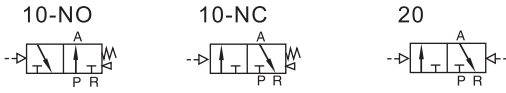


WINMAN Hava Kontrollü Pnömatik Valf (3/2 yollu) / Air Control Pneumatic Valve (3/2 way)

3A200 Serisi / 3A200 Series


Özellikler / Specification

Model	3A210-06	3A220-06	3A210-08	3A220-08
Fluid	Air (to be filtered by 40 µm filter element)			
Acting	Exterior Control			
Port size [Note1]	In=Out=1/8"		In=Out=1/4"	
Orifice size	14.0mm ² (Cv = 0.78)		16.0mm ² (Cv = 0.89)	
Valve type	3 port 2 position			
Lubrication [Note2]	Not required			
Operating pressure	0.15~0.8MPa(21~114psi)			
Proof pressure	1.2MPa(175psi)			
Temperature	-20~70°C			
Material of body	Aluminum alloy			
Max. frequency [Note 3]	5 cycle/sec			

Sembol / Symbol


[Note1] PT thread, G thread and NPT thread are available.
 [Note2] Once lubricated air is used, continue with same medium to optimise valve life span. Lubricants like ISO VG32 or equivalent are recommended.
 [Note3] The maximum actuation frequency is in the no-load state.

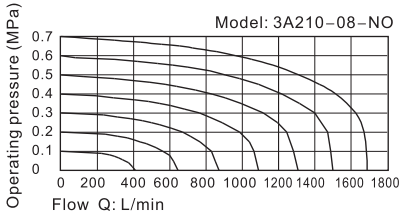
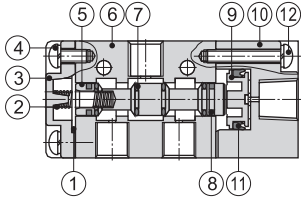
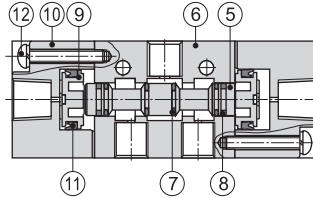
Ürün Özelliği / Product Feature

1. Structure in sliding column mode: good tightness and sensitive reaction.
2. Double air control valves have memory function.
3. Internal hole adopts special processing technology which has little attrition friction, low start pressure and long service life.
4. No need to add oil for lubrication.
5. Multi-mounting helps to install and apply.
6. Integrate with the manifold to save installation space.

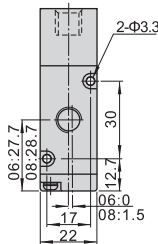
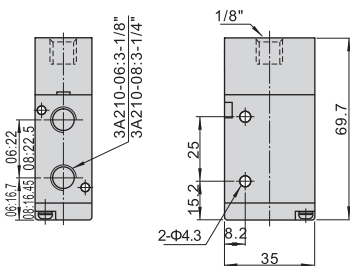
Sipariş Kodu / Ordering Code
3A 2 10 08 NO □


① Model	② Code	③ Valve type	④ Port size	⑤ Acting type	⑥ Thread type
3A: Air Valve (3/2 way)	2: 200 Series	10: Single air control 20: Double air control	06: 1/8" 08: 1/4"	NC: Normally close NO: Normally open No this code	Blank: PT G: G T: NPT

Please refer to 107 for manifold specification and the order way.

Akış Şeması / Flow Chart

İç Yapı / Inner Structure
3A210

3A220


No.	Item	No.	Item
1	Bottom cover gasket	7	O-ring
2	Spring	8	Wear ring
3	Bottom cover	9	Piston
4	Bottom cover screw	10	Pilot body
5	Spool	11	Piston O-ring
6	Body	12	Piston screw

Boyutlar / Dimensions
3A210

3A220
